


Anti-SREBP2 antibody ab112046

★★★★★ [2 Abreviews](#) [5 References](#) [画像数 2](#)

製品の概要

製品名	Anti-SREBP2 antibody
製品の詳細	Rabbit polyclonal to SREBP2
由来種	Rabbit
アプリケーション	適用あり: WB, IP
種交差性	交差種: Human 交差が予測される動物種: Rat, Horse, Chicken, Guinea pig, Cow, Dog, Pig, Chimpanzee, Ferret, Rhesus monkey, Gorilla, Chinese hamster, Orangutan 
免疫原	Synthetic peptide corresponding to Human SREBP2 aa 300-350. Database link: Q12772
ポジティブ・コントロール	HeLa and 293T whole cell lysate
特記事項	<p>The Life Science industry has been in the grips of a reproducibility crisis for a number of years. Abcam is leading the way in addressing this with our range of recombinant monoclonal antibodies and knockout edited cell lines for gold-standard validation. Please check that this product meets your needs before purchasing.</p> <p>If you have any questions, special requirements or concerns, please send us an inquiry and/or contact our Support team ahead of purchase. Recommended alternatives for this product can be found below, along with publications, customer reviews and Q&As</p>

製品の特性

製品の状態	Liquid
保存方法	Shipped at 4°C. Upon delivery aliquot and store at -20°C. Avoid freeze / thaw cycles.
バッファー	pH: 7.00 Preservative: 0.09% Sodium azide Constituent: 99% Tris citrate/phosphate
精製度	Immunogen affinity purified
ポリ/モノ	ポリクローナル
アイソタイプ	IgG

アプリケーション

The Abpromise guarantee

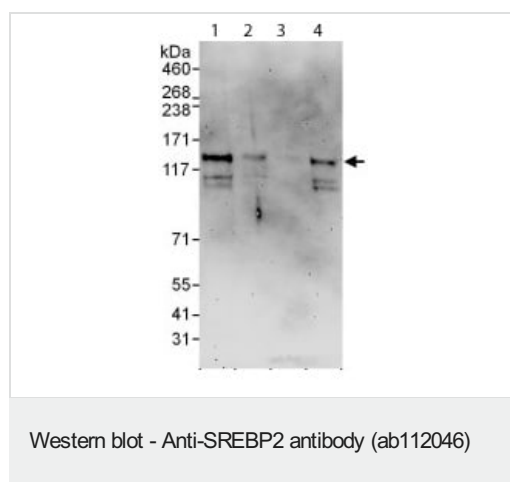
Abpromise保証は、次のテスト済みアプリケーションにおけるab112046の使用に適用されます
アプリケーションノートには、推奨の開始希釈率がありますが、適切な希釈率につきましてはご確認ください。

アプリケーション	Abreviews	特記事項
WB	★★★★★ (2)	1/1000 - 1/5000. Predicted molecular weight: 124 kDa.
IP		Use at 2-10 µg/mg of lysate.

ターゲット情報

機能	Transcriptional activator required for lipid homeostasis. Regulates transcription of the LDL receptor gene as well as the cholesterol and to a lesser degree the fatty acid synthesis pathway (By similarity). Binds the sterol regulatory element 1 (SRE-1) (5'-ATCACCCAC-3') found in the flanking region of the LDRL and HMG-CoA synthase genes.
組織特異性	Ubiquitously expressed in adult and fetal tissues.
配列類似性	Belongs to the SREBP family. Contains 1 basic helix-loop-helix (bHLH) domain.
翻訳後修飾	At low cholesterol the SCAP/SREBP complex is recruited into COPII vesicles for export from the ER. In the Golgi complex SREBPs are cleaved sequentially by site-1 and site-2 protease. The first cleavage by site-1 protease occurs within the luminal loop, the second cleavage by site-2 protease occurs within the first transmembrane domain and releases the transcription factor from the Golgi membrane. Apoptosis triggers cleavage by the cysteine proteases caspase-3 and caspase-7.
細胞内局在	Nucleus and Endoplasmic reticulum membrane. Golgi apparatus membrane. Cytoplasmic vesicle > COPII-coated vesicle membrane. Moves from the endoplasmic reticulum to the Golgi in the absence of sterols.

画像



All lanes : Anti-SREBP2 antibody (ab112046) at 0.4 µg/ml

Lane 1 : HeLa whole cell lysate at 50 µg

Lane 2 : HeLa whole cell lysate at 15 µg

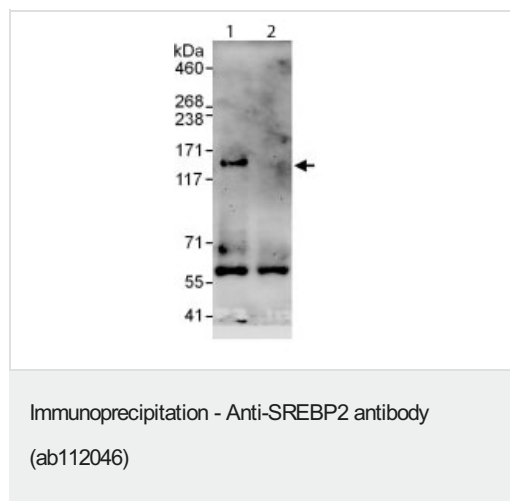
Lane 3 : HeLa whole cell lysate at 5 µg

Lane 4 : 293T whole cell lysate at 50 µg

Developed using the ECL technique.

Predicted band size: 124 kDa

Exposure time: 3 minutes



Detection of SREBP2 by Western Blot of Immunoprecipitate.

Lane 1: ab112046 at 1µg/ml staining SREBP2 in HeLa whole cell lysate immunoprecipitated using ab112046 at 6µg/mg lysate (1 mg/IP; 20% of IP loaded/lane).

Lane 2: Control IgG

Detection: Chemiluminescence with exposure time of 30 seconds.

Please note: All products are "FOR RESEARCH USE ONLY. NOT FOR USE IN DIAGNOSTIC PROCEDURES"

Our Abpromise to you: Quality guaranteed and expert technical support

- Replacement or refund for products not performing as stated on the datasheet
- Valid for 12 months from date of delivery
- Response to your inquiry within 24 hours
- We provide support in Chinese, English, French, German, Japanese and Spanish
- Extensive multi-media technical resources to help you
- We investigate all quality concerns to ensure our products perform to the highest standards

If the product does not perform as described on this datasheet, we will offer a refund or replacement. For full details of the Abpromise, please visit <https://www.abcam.co.jp/abpromise> or contact our technical team.

Terms and conditions

- Guarantee only valid for products bought direct from Abcam or one of our authorized distributors