

### Anti-Src (phospho Y419) antibody ab4816

★★★★★ [5 Abreviews](#) [47 References](#) [画像数 2](#)

#### 製品の概要

製品名	Anti-Src (phospho Y419) antibody
製品の詳細	Rabbit polyclonal to Src (phospho Y419)
由来種	Rabbit
アプリケーション	<b>適用あり:</b> IHC-P, IHC-FoFr, WB
種交差性	<b>交差種:</b> Mouse, Chicken, Human
免疫原	Synthetic peptide corresponding to Src (phospho Y419). The sequence is conserved in mouse, rat, chicken and frog.

#### 特記事項

Src (also known as pp60src) is a non-receptor tyrosine kinase involved in signal transduction in many biological systems and implicated in the development of human tumors. Tyrosine 418 is located in the catalytic domain and is one of the autophosphorylation sites. Full catalytic activity of Src requires phosphorylation of tyrosine 418 (tyrosine 414 on frog Src, tyrosine 416 on chicken Src, and tyrosine 424 on mouse Src). This region of Src is also highly conserved in all of the related Src-family kinases, and thus prior immunoprecipitation may be required to identify which Src family member is being activated.

The Life Science industry has been in the grips of a reproducibility crisis for a number of years. Abcam is leading the way in addressing this with our range of recombinant monoclonal antibodies and knockout edited cell lines for gold-standard validation. Please check that this product meets your needs before purchasing.

If you have any questions, special requirements or concerns, please send us an inquiry and/or contact our Support team ahead of purchase. Recommended alternatives for this product can be found below, along with publications, customer reviews and Q&As

#### 製品の特性

製品の状態	Liquid
保存方法	Shipped at 4°C. Store at +4°C short term (1-2 weeks). Upon delivery aliquot. Store at -20°C long term. Avoid freeze / thaw cycle.
バッファー	pH: 7.30 Preservative: 0.05% Sodium azide Constituents: PBS, 50% Glycerol, 0.1% BSA

精製度	Immunogen affinity purified
特記事項 (精製)	Purified from rabbit serum by sequential epitope-specific chromatography. The antibody has been negatively pre-adsorbed using (i) a non-phosphopeptide corresponding to the site of phosphorylation to remove antibody that is reactive with non-phosphorylated Src, and (ii) a generic tyrosine phosphorylated peptide to remove antibody that is reactive with phosphotyrosine, irrespective of the sequence. The final product is generated by affinity chromatography using a Src-derived peptide that is phosphorylated at tyrosine 418.
一次抗体 備考	Src (also known as pp60src) is a non-receptor tyrosine kinase involved in signal transduction in many biological systems and implicated in the development of human tumors. Tyrosine 418 is located in the catalytic domain and is one of the autophosphorylation sites. Full catalytic activity of Src requires phosphorylation of tyrosine 418 (tyrosine 414 on frog Src, tyrosine 416 on chicken Src, and tyrosine 424 on mouse Src). This region of Src is also highly conserved in all of the related Src-family kinases, and thus prior immunoprecipitation may be required to identify which Src family member is being activated.
ポリ/モノ	ポリクローナル
アイソタイプ	IgG

## アプリケーション

**The Abpromise guarantee**      **Abpromise保証は、次のテスト済みアプリケーションにおけるab4816の使用に適用されます**  
 アプリケーションノートには、推奨の開始希釈率がありますが、適切な希釈率につきましてはご検討ください。

アプリケーション	Abreviews	特記事項
IHC-P		1/10 - 1/100.
IHC-FoFr		Use at an assay dependent concentration. PubMed: 21901128
WB	★★★★★ (2)	1/1000. Detects a band of approximately 60 kDa (predicted molecular weight: 60 kDa).

## ターゲット情報

機能	Non-receptor protein tyrosine kinase that plays pivotal roles in numerous cellular processes such as proliferation, migration, and transformation. In concert with PTK2B, plays an important role in osteoclastic bone resorption. Both the formation of a SRC-PTK2B complex, and SRC kinase activity are necessary for this function. Once it is recruited to the activated integrins, by PTK2B, it phosphorylates CBL which in turn induces the activation and recruitment of phosphatidylinositol 3-kinase to the cell membrane in a signaling pathway that is critical for osteoclast function. Promotes energy production in osteoclasts by activating mitochondrial cytochrome C oxidase. Phosphorylates RUNX3 and COX2 on tyrosine residues, TNK2 on 'Tyr-284' and CBL on 'Tyr-731'. Enhances DDX58/RIG-I-elicited antiviral signaling.
配列類似性	Belongs to the protein kinase superfamily. Tyr protein kinase family. SRC subfamily. Contains 1 protein kinase domain. Contains 1 SH2 domain. Contains 1 SH3 domain.
翻訳後修飾	Dephosphorylated at Tyr-530 by PTPRJ (By similarity). Phosphorylated on Tyr-530 by c-Src

kinase (CSK). The phosphorylated form is termed pp60c-src. Dephosphorylated by PTPRJ at Tyr-419. Normally maintained in an inactive conformation with the SH2 domain engaged with Tyr-530, the SH3 domain engaged with the SH2-kinase linker, and Tyr-419 dephosphorylated. Dephosphorylation of Tyr-530 as a result of protein tyrosine phosphatase (PTP) action disrupts the intramolecular interaction between the SH2 domain and Tyr-530, Tyr-419 can then become autophosphorylated, resulting in SRC activation. Phosphorylation of Tyr-530 by CSK allows this interaction to reform, resulting in SRC inactivation.

S-nitrosylation is important for activation of its kinase activity.

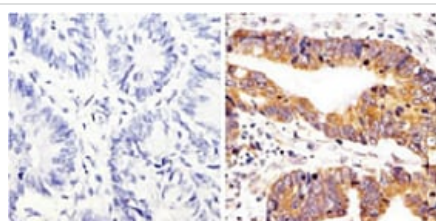
## 細胞内局在

Cell membrane. Mitochondrion inner membrane.

## 製品の状態

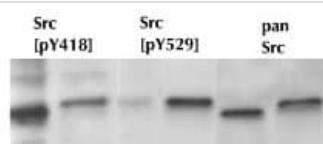
This protein is known to be similar in amino acid sequence to HCK (P08631), LCK (P06239), FYN (P06241), YES1 (P07947), and LYN (P07948). Therefore, cross-reactivity with these homologous proteins may be observed. We would be happy to provide immunogen alignment information upon request.

## 画像



Immunohistochemistry (Formalin/PFA-fixed paraffin-embedded sections) - Anti-Src (phospho Y418) antibody (ab4816)

Immunohistochemical analysis of paraffin embedded Human colon carcinoma, labelling Src with ab4816. A negative control without ab4816 is shown on the left. Antigen retrieval performed using 10mM sodium citrate, microwaved for 8-15mins, blocked using 3% H2O2-methanol, then treated with ab4816 followed by an HRP-conjugated secondary antibody. Counterstaining with hematoxylin.



Western blot - Anti-Src (phospho Y418) antibody (ab4816)

Dr. Michael Schaller, Dept. of Cell Bio. & Anat., Univ. of North Carolina, Chapel Hill, NC.

Western blot detection of Src phosphorylation in extracts of chick embryo fibroblasts expressing wild-type (lanes 2,4,6) or mutant (lanes 1,3,5) pp60src. Truncation of Src at position 518 eliminated phosphorylation at the negative regulatory site [pY529], while increasing phosphorylation at the catalytic site [pY418].

Western blot detection of Src phosphorylation in extracts of chick embryo fibroblasts expressing wild-type (lanes 2,4,6) or mutant (lanes 1,3,5) pp60src. Truncation of Src at position 518 eliminated phosphorylation at the negative regulatory site [pY529], while increasing phosphorylation at the catalytic site [pY418].

**Please note:** All products are "FOR RESEARCH USE ONLY. NOT FOR USE IN DIAGNOSTIC PROCEDURES"

### **Our Abpromise to you: Quality guaranteed and expert technical support**

---

- Replacement or refund for products not performing as stated on the datasheet
- Valid for 12 months from date of delivery
- Response to your inquiry within 24 hours
  
- We provide support in Chinese, English, French, German, Japanese and Spanish
- Extensive multi-media technical resources to help you
- We investigate all quality concerns to ensure our products perform to the highest standards

If the product does not perform as described on this datasheet, we will offer a refund or replacement. For full details of the Abpromise, please visit <https://www.abcam.co.jp/abpromise> or contact our technical team.

### **Terms and conditions**

---

- Guarantee only valid for products bought direct from Abcam or one of our authorized distributors