

Anti-Src (phospho S75) antibody ab79308

★★★★★ [1 Abreviews](#) [6 References](#) [画像数 3](#)

製品の概要

製品名	Anti-Src (phospho S75) antibody
製品の詳細	Rabbit polyclonal to Src (phospho S75)
由来種	Rabbit
アプリケーション	適用あり: WB, IHC-P
種交差性	交差種: Human 交差が予測される動物種: Mouse, Rat 
免疫原	Synthetic peptide corresponding to Human Src (phospho S75).
特記事項	<p>The Life Science industry has been in the grips of a reproducibility crisis for a number of years. Abcam is leading the way in addressing this with our range of recombinant monoclonal antibodies and knockout edited cell lines for gold-standard validation. Please check that this product meets your needs before purchasing.</p> <p>If you have any questions, special requirements or concerns, please send us an inquiry and/or contact our Support team ahead of purchase. Recommended alternatives for this product can be found below, along with publications, customer reviews and Q&As</p>

製品の特性

製品の状態	Liquid
保存方法	Shipped at 4°C. Upon delivery aliquot and store at -20°C. Avoid freeze / thaw cycles.
バッファー	pH: 7.40 Preservative: 0.02% Sodium azide Constituents: PBS, 50% Glycerol, 0.87% Sodium chloride Without Mg ²⁺ and Ca ²⁺
精製度	Immunogen affinity purified
特記事項 (精製)	Purified by affinity chromatography using an epitope specific phosphopeptide. The antibody against non-phosphopeptide was removed by chromatography using non-phosphopeptide corresponding to the phosphorylation site
ポリ/モノ	ポリクローナル
アイソタイプ	IgG

アプリケーション

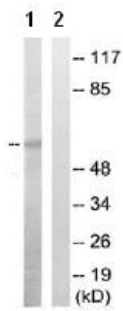
The Abpromise guarantee Abpromise保証は、次のテスト済みアプリケーションにおけるab79308の使用に適用されます
アプリケーションノートには、推奨の開始希釈率がありますが、適切な希釈率につきましてはご検討ください。

アプリケーション	Abreviews	特記事項
WB		1/500 - 1/1000. Predicted molecular weight: 60 kDa.
IHC-P	★★★★★ (1)	1/50 - 1/100.

ターゲット情報

機能	<p>Non-receptor protein tyrosine kinase that plays pivotal roles in numerous cellular processes such as proliferation, migration, and transformation. In concert with PTK2B, plays an important role in osteoclastic bone resorption. Both the formation of a SRC-PTK2B complex, and SRC kinase activity are necessary for this function. Once it is recruited to the activated integrins, by PTK2B, it phosphorylates CBL which in turn induces the activation and recruitment of phosphatidylinositol 3-kinase to the cell membrane in a signaling pathway that is critical for osteoclast function. Promotes energy production in osteoclasts by activating mitochondrial cytochrome C oxidase. Phosphorylates RUNX3 and COX2 on tyrosine residues, TNK2 on 'Tyr-284' and CBL on 'Tyr-731'. Enhances DDX58/RIG-I-elicited antiviral signaling.</p>
配列類似性	<p>Belongs to the protein kinase superfamily. Tyr protein kinase family. SRC subfamily. Contains 1 protein kinase domain. Contains 1 SH2 domain. Contains 1 SH3 domain.</p>
翻訳後修飾	<p>Dephosphorylated at Tyr-530 by PTPRJ (By similarity). Phosphorylated on Tyr-530 by c-Src kinase (CSK). The phosphorylated form is termed pp60c-src. Dephosphorylated by PTPRJ at Tyr-419. Normally maintained in an inactive conformation with the SH2 domain engaged with Tyr-530, the SH3 domain engaged with the SH2-kinase linker, and Tyr-419 dephosphorylated. Dephosphorylation of Tyr-530 as a result of protein tyrosine phosphatase (PTP) action disrupts the intramolecular interaction between the SH2 domain and Tyr-530, Tyr-419 can then become autophosphorylated, resulting in SRC activation. Phosphorylation of Tyr-530 by CSK allows this interaction to reform, resulting in SRC inactivation. S-nitrosylation is important for activation of its kinase activity.</p>
細胞内局在	<p>Cell membrane. Mitochondrion inner membrane.</p>
製品の状態	<p>This protein is known to be similar in amino acid sequence to HCK (P08631), LCK (P06239), FYN (P06241), YES1 (P07947), and LYN (P07948). Therefore, cross-reactivity with these homologous proteins may be observed. We would be happy to provide immunogen alignment information upon request.</p>

画像



Western blot - Anti-Src (phospho S75) antibody (ab79308)

All lanes : Anti-Src (phospho S75) antibody (ab79308) at 1/1000 dilution

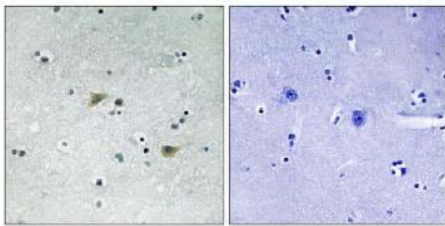
Lane 1 : extracts from COLO cells (treated with EGF, 200ng/ml, 30mins)

Lane 2 : extracts from COLO cells (treated with EGF, 200ng/ml, 30mins) with immunizing peptide at 10 µg

Lysates/proteins at 30 µg per lane.

Predicted band size: 60 kDa

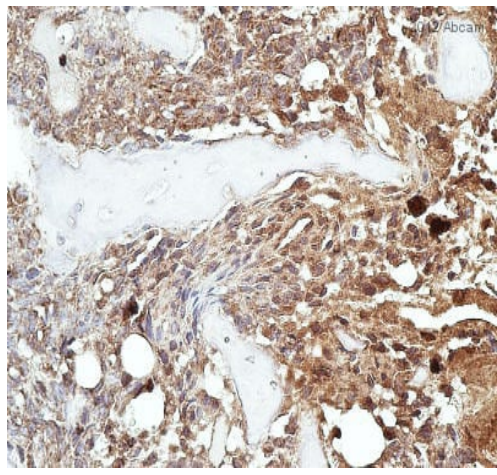
Observed band size: 60 kDa



P-peptide - +

Immunohistochemistry (Formalin/PFA-fixed paraffin-embedded sections) - Anti-Src (phospho S75) antibody (ab79308)

Left panel: immunohistochemistry analysis of paraffin-embedded Human brain tissue with ab79308 at 1/100 dilution. Right panel: same, after pre-incubation with the immunizing peptide



Immunohistochemistry (Formalin/PFA-fixed paraffin-embedded sections) - Anti-Src (phospho S75) antibody (ab79308)

This image is courtesy of an anonymous Abreview

ab79308 staining Src (phospho S75) in Dog osteosarcoma tissue sections by Immunohistochemistry (IHC-P - paraformaldehyde-fixed, paraffin-embedded sections). Tissue was fixed with acetone and blocked with 2% serum for 1 hour; antigen retrieval was by heat mediation. Samples were incubated with primary antibody (1/50 in serum) for 14 hours at 4°C. A Biotinylated Goat anti-rabbit IgG (1/400) was used as the secondary antibody.

Please note: All products are "FOR RESEARCH USE ONLY. NOT FOR USE IN DIAGNOSTIC PROCEDURES"

Our Abpromise to you: Quality guaranteed and expert technical support

- Replacement or refund for products not performing as stated on the datasheet
- Valid for 12 months from date of delivery
- Response to your inquiry within 24 hours
- We provide support in Chinese, English, French, German, Japanese and Spanish
- Extensive multi-media technical resources to help you
- We investigate all quality concerns to ensure our products perform to the highest standards

If the product does not perform as described on this datasheet, we will offer a refund or replacement. For full details of the Abpromise, please visit <https://www.abcam.co.jp/abpromise> or contact our technical team.

Terms and conditions

- Guarantee only valid for products bought direct from Abcam or one of our authorized distributors