

Anti-Src antibody ab47405

★★★★★ [6 Abreviews](#) [33 References](#) [画像数 8](#)

製品の概要

製品名	Anti-Src antibody
製品の詳細	Rabbit polyclonal to Src
由来種	Rabbit
特異性	This antibody detects endogenous levels of total Src protein. It will react with Src (pY529), Yes (pY538), and Fyn (Y531).
アプリケーション	適用あり: ICC/IF, WB, IHC-P, ELISA
種交差性	交差種: Mouse, Rat, Human, Pig
免疫原	Synthetic peptide corresponding to Human Src aa 487-536. Database link: P12931
ポジティブ・コントロール	WB: HEK-293, HeLa cells; mouse primary astrocytes. IHC-P: Human breast carcinoma tissue. ICC/IF: HEK-293 cells; pig retinal pigment epithelium cells.
特記事項	<p>The Life Science industry has been in the grips of a reproducibility crisis for a number of years. Abcam is leading the way in addressing this with our range of recombinant monoclonal antibodies and knockout edited cell lines for gold-standard validation. Please check that this product meets your needs before purchasing.</p> <p>If you have any questions, special requirements or concerns, please send us an inquiry and/or contact our Support team ahead of purchase. Recommended alternatives for this product can be found below, along with publications, customer reviews and Q&As</p>

製品の特性

製品の状態	Liquid
保存方法	Shipped at 4°C. Store at +4°C short term (1-2 weeks). Upon delivery aliquot. Store at -20°C. Avoid freeze / thaw cycle.
バッファー	<p>pH: 7.40</p> <p>Preservative: 0.02% Sodium azide</p> <p>Constituents: PBS, 50% Glycerol, 0.87% Sodium chloride</p> <p>PBS without Mg+2 and Ca+2</p>
精製度	Immunogen affinity purified
特記事項 (精製)	The antibody was affinity-purified from rabbit antiserum by affinity-chromatography using epitope-

	specific immunogen.
ポリ/モノ	ポリクローナル
アイソタイプ	IgG

アプリケーション

The Abpromise guarantee Abpromise保証は、 次のテスト済みアプリケーションにおけるab47405の使用に適用されます
アプリケーションノートには、推奨の開始希釈率がありますが、適切な希釈率につきましてはご検討ください。

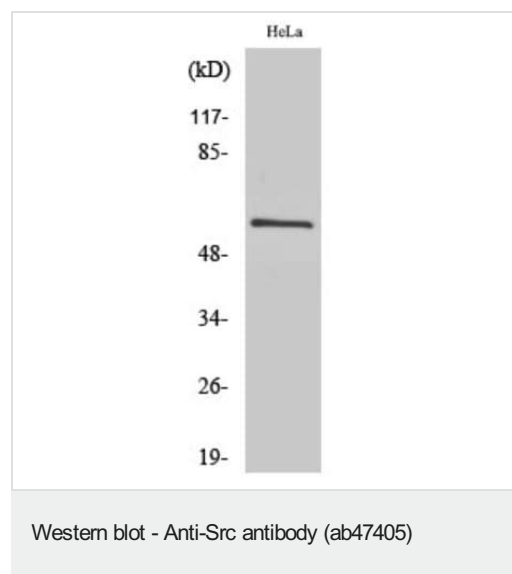
アプリケーション	Abreviews	特記事項
ICC/IF	★★★★★ (3)	Use a concentration of 1 - 5 µg/ml.
WB	★★★★★ (3)	1/500 - 1/1000. Detects a band of approximately 60 kDa (predicted molecular weight: 60 kDa).
IHC-P		Use at an assay dependent concentration.
ELISA		Use at an assay dependent concentration. Peptide ELISA only.

ターゲット情報

機能	Non-receptor protein tyrosine kinase that plays pivotal roles in numerous cellular processes such as proliferation, migration, and transformation. In concert with PTK2B, plays an important role in osteoclastic bone resorption. Both the formation of a SRC-PTK2B complex, and SRC kinase activity are necessary for this function. Once it is recruited to the activated integrins, by PTK2B, it phosphorylates CBL which in turn induces the activation and recruitment of phosphatidylinositol 3-kinase to the cell membrane in a signaling pathway that is critical for osteoclast function. Promotes energy production in osteoclasts by activating mitochondrial cytochrome C oxidase. Phosphorylates RUNX3 and COX2 on tyrosine residues, TNK2 on 'Tyr-284' and CBL on 'Tyr-731'. Enhances DDX58/RIG-I-elicited antiviral signaling.
配列類似性	Belongs to the protein kinase superfamily. Tyr protein kinase family. SRC subfamily. Contains 1 protein kinase domain. Contains 1 SH2 domain. Contains 1 SH3 domain.
翻訳後修飾	Dephosphorylated at Tyr-530 by PTPRJ (By similarity). Phosphorylated on Tyr-530 by c-Src kinase (CSK). The phosphorylated form is termed pp60c-src. Dephosphorylated by PTPRJ at Tyr-419. Normally maintained in an inactive conformation with the SH2 domain engaged with Tyr-530, the SH3 domain engaged with the SH2-kinase linker, and Tyr-419 dephosphorylated. Dephosphorylation of Tyr-530 as a result of protein tyrosine phosphatase (PTP) action disrupts the intramolecular interaction between the SH2 domain and Tyr-530, Tyr-419 can then become autophosphorylated, resulting in SRC activation. Phosphorylation of Tyr-530 by CSK allows this interaction to reform, resulting in SRC inactivation. S-nitrosylation is important for activation of its kinase activity.
細胞内局在	Cell membrane. Mitochondrion inner membrane.
製品の状態	This protein is known to be similar in amino acid sequence to HCK (P08631), LCK (P06239), FYN (P06241), YES1 (P07947), and LYN (P07948). Therefore, cross-reactivity with these

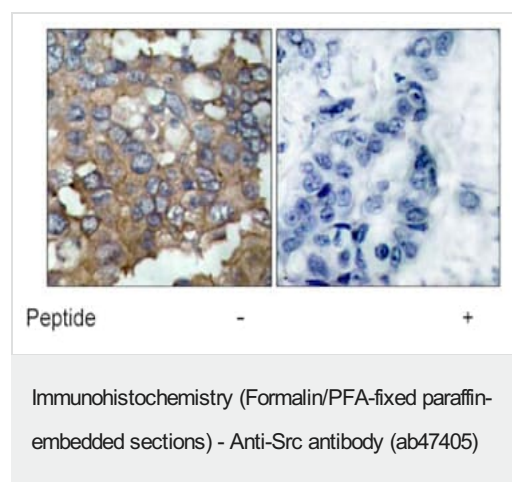
homologous proteins may be observed. We would be happy to provide immunogen alignment information upon request.

画像

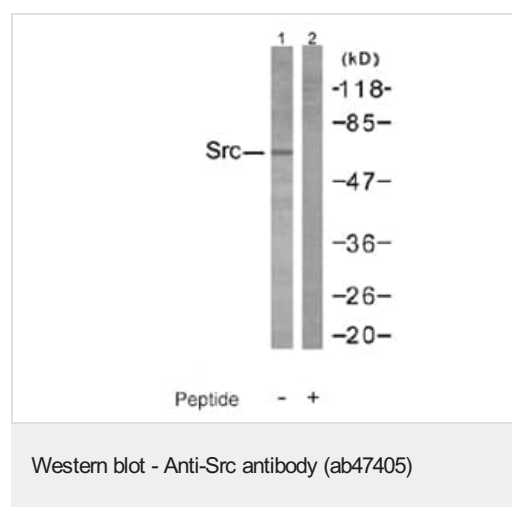


Anti-Src antibody (ab47405) at 1/2000 dilution + HeLa cells

Predicted band size: 60 kDa



Immunohistochemical analysis of paraffin-embedded human breast carcinoma tissue using Src antibody, in the presence and absence of blocking peptide.



All lanes : Anti-Src antibody (ab47405) at 1/500 dilution

Lane 1 : HEK-293 cell extracts

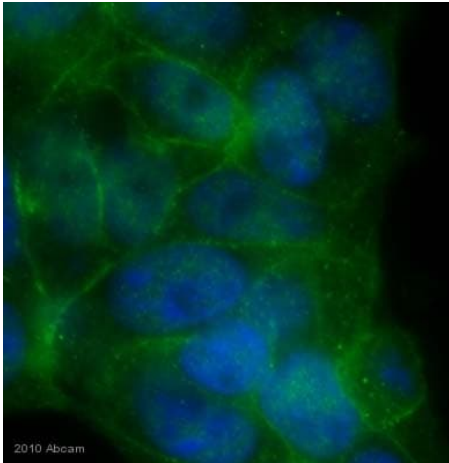
Lane 2 : HEK-293 cell extracts with Blocking peptide

Predicted band size: 60 kDa

Observed band size: 60 kDa

Western blot analysis of extracts from 293 cells using Src antibody in the presence and absence of blocking peptide. Western blot analysis of extracts from HEK-293 cells using Src antibody at 1/500

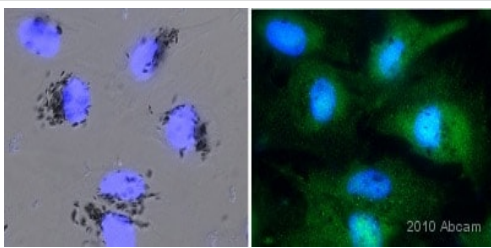
in the presence and absence of blocking peptide.



Immunocytochemistry/ Immunofluorescence - Anti-Src antibody (ab47405)

This image was kindly supplied by Dr Vladimir Milenkovic by Abreview

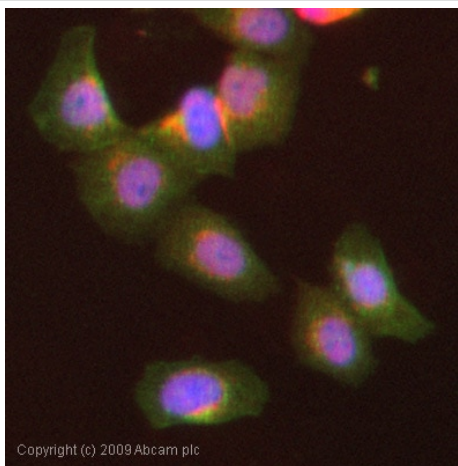
ab47405 staining Src in human HEK-293 cells by Immunocytochemistry/ Immunofluorescence. The cells were paraformaldehyde fixed, permeabilised in 0.5% Triton X-100 and then blocked using 5% serum for 20 minutes at 25°C. Samples were then incubated with primary antibody at 1/1000 for 16 hours at 4°C. The secondary antibody used was a goat anti-rabbit IgG conjugated to Alexa Fluor® 488 (green) used at a 1/5000 dilution. DAPI was used to stain the cell nuclei (blue).



Immunocytochemistry/ Immunofluorescence - Anti-Src antibody (ab47405)

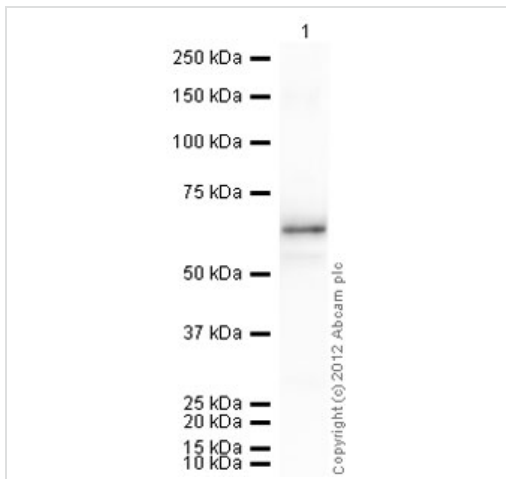
This image is courtesy of an Abreview submitted by Dr. Vladimir Milenkovic

ab47405 staining Src in Pig retinal pigment epithelium primary cells by ICC/IF (Immunocytochemistry/immunofluorescence). Cells were fixed with paraformaldehyde, permeabilized with 0.5% Triton X-100 and blocked with 5% serum for 20 minutes at 25°C. Samples were incubated with primary antibody (1/1000 in 0.1% TX100, 1% goat serum, 1XPBS) for 16 hours at 4°C. An Alexa Fluor®488-conjugated goat anti-rabbit IgG polyclonal (1/5000) was used as the secondary antibody. Nuclei were counterstained with DAPI.



Immunocytochemistry/ Immunofluorescence - Anti-Src antibody (ab47405)

ICC/IF image of ab47405 stained MCF7 cells (**ab3871**). The cells were 100% methanol fixed (5 min) and then incubated in 1%BSA / 10% normal goat serum / 0.3M glycine in 0.1% PBS-Tween for 1h to permeabilise the cells and block non-specific protein-protein interactions. The cells were then incubated with the antibody (ab47405, 1µg/ml) overnight at +4°C. The secondary antibody (green) was Alexa Fluor® 488 goat anti-rabbit IgG (H+L) (**ab150077**) used at a 1/1000 dilution for 1h. Alexa Fluor® 594 WGA was used to label plasma membranes (red) at a 1/200 dilution for 1h. DAPI was used to stain the cell nuclei (blue) at a concentration of 1.43µM.



Western blot - Anti-Src antibody (ab47405)

Anti-Src antibody (ab47405) at 1/500 dilution + Recombinant human Src protein ([ab79635](#)) at 0.001 µg

Secondary

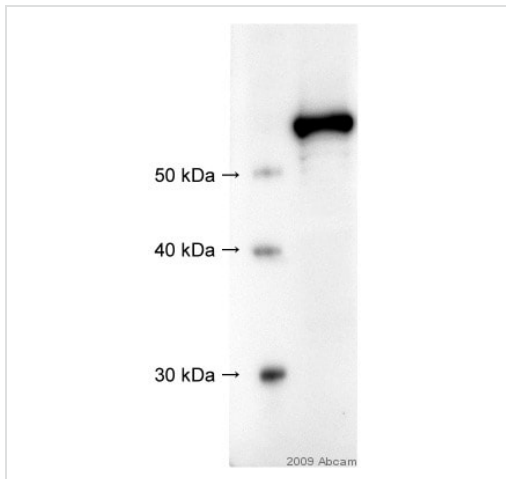
Goat Anti-Rabbit IgG H&L (HRP) preadsorbed ([ab97080](#)) at 1/5000 dilution

Developed using the ECL technique.

Performed under reducing conditions.

Predicted band size: 60 kDa

Exposure time: 10 seconds



Western blot - Anti-Src antibody (ab47405)

This image is courtesy of an anonymous abreview.

Anti-Src antibody (ab47405) at 1/1000 dilution + whole cell lysate prepared from mouse primary astrocytes at 15 µg

Secondary

Goat anti-rabbit IgG conjugated to HRP at 1/5000 dilution

Performed under reducing conditions.

Predicted band size: 60 kDa

Observed band size: 60 kDa

Exposure time: 5 seconds

Primary antibody incubated for 1 hour at 25°C.

Blocked with 3% BSA for 1 hour at 25°C.

Gel run under denaturing conditions.

Detection method: ImmunoStar.

Please note: All products are "FOR RESEARCH USE ONLY. NOT FOR USE IN DIAGNOSTIC PROCEDURES"

Our Abpromise to you: Quality guaranteed and expert technical support

- Replacement or refund for products not performing as stated on the datasheet
- Valid for 12 months from date of delivery
- Response to your inquiry within 24 hours

- We provide support in Chinese, English, French, German, Japanese and Spanish
- Extensive multi-media technical resources to help you
- We investigate all quality concerns to ensure our products perform to the highest standards

If the product does not perform as described on this datasheet, we will offer a refund or replacement. For full details of the Abpromise, please visit <https://www.abcam.co.jp/abpromise> or contact our technical team.

Terms and conditions

- Guarantee only valid for products bought direct from Abcam or one of our authorized distributors