

Anti-SPTBN1 antibody ab72239

★★★★★ **2 Abreviews** **10 References** 画像数 4

製品の概要

製品名	Anti-SPTBN1 antibody
製品の詳細	Rabbit polyclonal to SPTBN1
由来種	Rabbit
アプリケーション	適用あり: WB, IP, IHC-P
種交差性	交差種: Human 交差が予測される動物種: Horse, Cow, Dog, Chimpanzee, Ferret, Rhesus monkey, Gorilla, Opossum, Orangutan, Elephant 
免疫原	Synthetic peptide corresponding to Human SPTBN1. Database link: Q01082
ポジティブ・コントロール	IHC-P: Human colon carcinoma tissue. WB: HeLa cells. IP: HeLa cells.
特記事項	<p>The Life Science industry has been in the grips of a reproducibility crisis for a number of years. Abcam is leading the way in addressing this with our range of recombinant monoclonal antibodies and knockout edited cell lines for gold-standard validation. Please check that this product meets your needs before purchasing.</p> <p>If you have any questions, special requirements or concerns, please send us an inquiry and/or contact our Support team ahead of purchase. Recommended alternatives for this product can be found below, along with publications, customer reviews and Q&As</p>

製品の特性

製品の状態	Liquid
保存方法	Shipped at 4°C. Upon delivery aliquot and store at -20°C. Avoid freeze / thaw cycles.
バッファー	pH: 6.8 Preservative: 0.09% Sodium azide Constituents: 0.1% BSA, Tris buffered saline
精製度	Immunogen affinity purified
ポリ/モノ	ポリクローナル
アイソタイプ	IgG

アプリケーション

The Abpromise guarantee

Abpromise保証は、次のテスト済みアプリケーションにおけるab72239の使用に適用されます

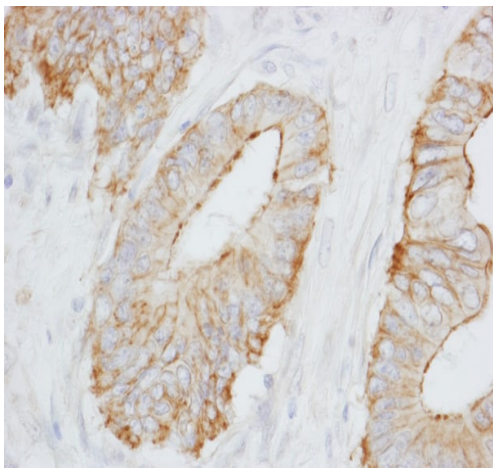
アプリケーションノートには、推奨の開始希釈率がありますが、適切な希釈率につきましてはご検討ください。

アプリケーション	Abreviews	特記事項
WB	★★★★★ (1)	1/2000 - 1/10000. Detects a band of approximately 274 kDa (predicted molecular weight: 274 kDa).
IP		Use at 2-5 µg/mg of lysate.
IHC-P		Use a concentration of 1 µg/ml. Perform heat mediated antigen retrieval with citrate buffer pH 6 before commencing with IHC staining protocol.

ターゲット情報

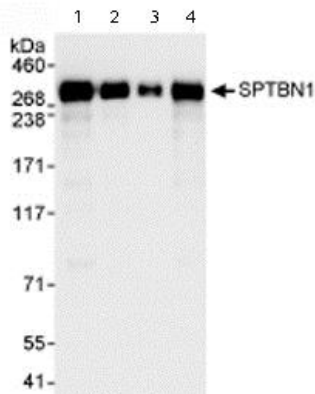
機能	Fodrin, which seems to be involved in secretion, interacts with calmodulin in a calcium-dependent manner and is thus candidate for the calcium-dependent movement of the cytoskeleton at the membrane.
組織特異性	Isoform 2 is present in brain, lung and kidney (at protein level).
配列類似性	Belongs to the spectrin family. Contains 2 CH (calponin-homology) domains. Contains 1 PH domain. Contains 17 spectrin repeats.
翻訳後修飾	Isoform 2 is phosphorylated on Ser-8 and Ser-10.
細胞内局在	Cell membrane and Cytoplasm > cytoskeleton. Cytoplasm > myofibril > sarcomere > M line. Colocalizes with ANK2 in a distinct intracellular compartment of neonatal cardiomyocytes.

画像



Immunohistochemistry (Formalin/PFA-fixed paraffin-embedded sections) - Anti-SPTBN1 antibody (ab72239)

Immunohistochemistry (Formalin/PFA-fixed paraffin-embedded sections) analysis of human colon carcinoma tissue labelling SPTBN1 with ab72239 at 1/1000 (0.2µg/ml). Detection: DAB.



Western blot - Anti-SPTBN1 antibody (ab72239)

All lanes : Anti-SPTBN1 antibody (ab72239) at 0.04 µg/ml

Lane 1 : Whole cell lysate from HeLa cells at 50 µg

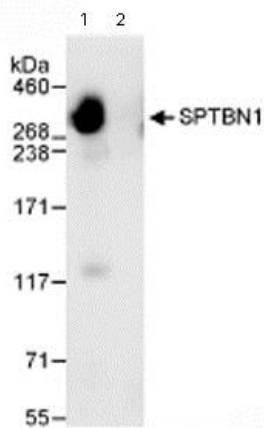
Lane 2 : Whole cell lysate from HeLa cells at 15 µg

Lane 3 : Whole cell lysate from HeLa cells at 5 µg

Lane 4 : Whole cell lysate from 293T cells at 50 µg

Predicted band size: 274 kDa

Observed band size: 274 kDa



Immunoprecipitation - Anti-SPTBN1 antibody (ab72239)

Immunoprecipitation/ Western Blot of SPTBN1.

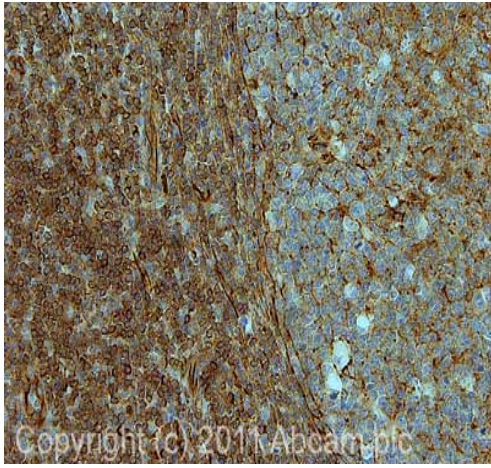
Lane 1: ab72239 at 3µg/mg whole cell lysate.

Lane 2: Control IgG.

ab72239 at 1µg/ml for WB.

Whole cell lysate from HeLa cells at 1mg for IP, 20% of IP loaded.

Chemiluminescence with an exposure time of 1 second.



Immunohistochemistry (Formalin/PFA-fixed paraffin-embedded sections) - Anti-SPTBN1 antibody (ab72239)

IHC image of ab72239 staining in human normal tonsil formalin fixed paraffin embedded tissue section, performed on a Leica Bond™ system using the standard protocol F. The section was pre-treated using heat mediated antigen retrieval with sodium citrate buffer (pH6, epitope retrieval solution 1) for 20 mins. The section was then incubated with ab72239, 1µg/ml, for 15 mins at room temperature and detected using an HRP conjugated compact polymer system. DAB was used as the chromogen. The section was then counterstained with haematoxylin and mounted with DPX.

For other IHC staining systems (automated and non-automated) customers should optimize variable parameters such as antigen retrieval conditions, primary antibody concentration and antibody incubation times.

Please note: All products are "FOR RESEARCH USE ONLY. NOT FOR USE IN DIAGNOSTIC PROCEDURES"

Our Abpromise to you: Quality guaranteed and expert technical support

- Replacement or refund for products not performing as stated on the datasheet
- Valid for 12 months from date of delivery
- Response to your inquiry within 24 hours
- We provide support in Chinese, English, French, German, Japanese and Spanish
- Extensive multi-media technical resources to help you
- We investigate all quality concerns to ensure our products perform to the highest standards

If the product does not perform as described on this datasheet, we will offer a refund or replacement. For full details of the Abpromise, please visit <https://www.abcam.co.jp/abpromise> or contact our technical team.

Terms and conditions

- Guarantee only valid for products bought direct from Abcam or one of our authorized distributors