


Anti-Spry-2 antibody ab85670

★★★★☆ [3 Abreviews](#) [9 References](#) [画像数 3](#)

製品の概要

製品名	Anti-Spry-2 antibody
製品の詳細	Rabbit polyclonal to Spry-2
由来種	Rabbit
特異性	From Mar 2024, QC testing of replenishment batches of this polyclonal changed. All tested and expected application and reactive species combinations are still covered by our Abcam product promise. However, we no longer test all applications. For more information on a specific batch, please contact our Scientific Support who will be happy to help. You may also be interested in our alternative recombinant antibody, ab180527 .
アプリケーション	適用あり: WB, ICC/IF, IHC-P
種交差性	交差種: Rat, Human 交差が予測される動物種: Mouse, Cynomolgus monkey, Orangutan 
免疫原	Synthetic peptide corresponding to Human Spry-2 aa 50-150 conjugated to keyhole limpet haemocyanin. (Peptide available as ab101081)
ポジティブ・コントロール	This antibody gave a positive signal in the following lysates: Human Brain Tissue; Human Lung Tissue; Human Heart Tissue; Jurkat Whole Cell Lysate; Caco2 Whole Cell Lysate; SW480 Whole Cell Lysate. IHC-P: Human skin melanoma FFPE tissue sections
特記事項	<p>The Life Science industry has been in the grips of a reproducibility crisis for a number of years. Abcam is leading the way in addressing this with our range of recombinant monoclonal antibodies and knockout edited cell lines for gold-standard validation. Please check that this product meets your needs before purchasing.</p> <p>If you have any questions, special requirements or concerns, please send us an inquiry and/or contact our Support team ahead of purchase. Recommended alternatives for this product can be found below, along with publications, customer reviews and Q&As</p>

製品の特性

製品の状態	Liquid
保存方法	Shipped at 4°C. Store at +4°C short term (1-2 weeks). Upon delivery aliquot. Store at -20°C or -80°C. Avoid freeze / thaw cycle.
バッファー	pH: 7.40

Preservative: 0.02% Sodium azide

Constituent: PBS

Batches of this product that have a concentration < 1mg/ml may have BSA added as a stabilising agent. If you would like information about the formulation of a specific lot, please contact our scientific support team who will be happy to help.

精製度	Immunogen affinity purified
ポリ/モノ	ポリクローナル
アイソタイプ	IgG

アプリケーション

The Abpromise guarantee **Abpromise保証は、次のテスト済みアプリケーションにおけるab85670の使用に適用されます**

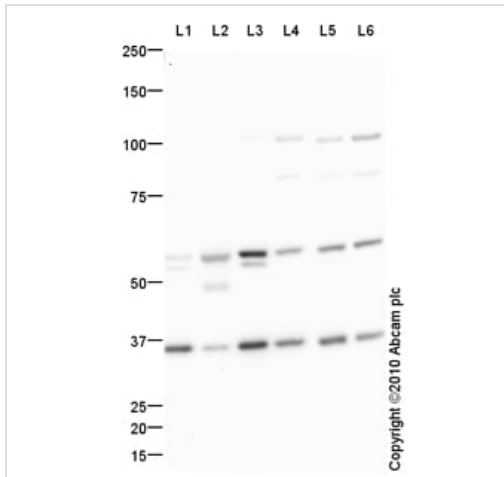
アプリケーションノートには、推奨の開始希釈率がありますが、適切な希釈率につきましてはご検討ください。

アプリケーション	Abreviews	特記事項
WB	★★★★☆ (1)	Use a concentration of 1 µg/ml. Detects a band of approximately 35 kDa (predicted molecular weight: 35 kDa).
ICC/IF		Use a concentration of 10 µg/ml.
IHC-P		Use a concentration of 1 µg/ml. Perform heat mediated antigen retrieval before commencing with IHC staining protocol.

ターゲット情報

機能	May function as an antagonist of fibroblast growth factor (FGF) pathways and may negatively modulate respiratory organogenesis.
配列類似性	Belongs to the sprouty family. Contains 1 SPR (sprouty) domain.
ドメイン	The Cys-rich domain is responsible for the localization of the protein to the membrane ruffles.
細胞内局在	Cytoplasm > cytoskeleton. Cell projection > ruffle membrane. Associated with microtubules in unstimulated cells but is translocated to the membrane ruffles in cells stimulated with EGF.

画像



Western blot - Anti-Spry-2 antibody (ab85670)

All lanes : Anti-Spry-2 antibody (ab85670) at 1 µg/ml

Lane 1 : Human brain tissue lysate - total protein ([ab29466](#))

Lane 2 : Lung (Human) Tissue Lysate

Lane 3 : Human heart tissue lysate - total protein ([ab29431](#))

Lane 4 : Jurkat (Human T cell lymphoblast-like cell line) Whole Cell Lysate

Lane 5 : Caco 2 (Human colonic carcinoma cell line) Whole Cell Lysate

Lane 6 : SW480 (Human colon adenocarcinoma cell line) Whole Cell Lysate

Lysates/proteins at 10 µg per lane.

Secondary

All lanes : Goat Anti-Rabbit IgG H&L (HRP) preadsorbed ([ab97080](#)) at 1/5000 dilution

Developed using the ECL technique.

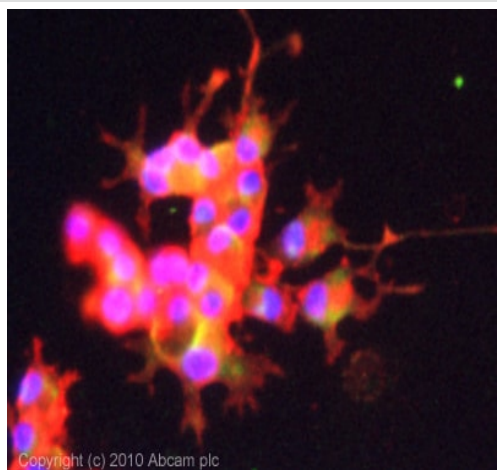
Performed under reducing conditions.

Predicted band size: 35 kDa

Observed band size: 35 kDa

Additional bands at: 100 kDa, 55 kDa. We are unsure as to the identity of these extra bands.

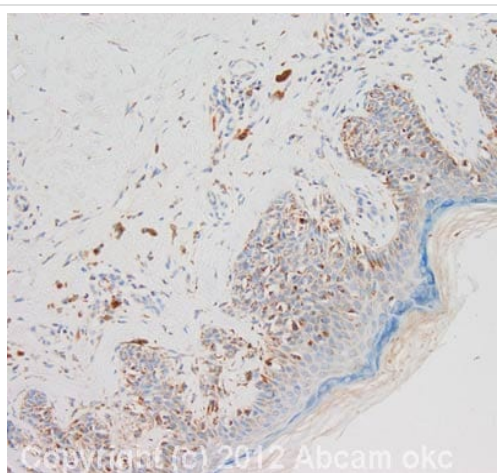
Exposure time: 2 minutes



Copyright (c) 2010 Abcam plc

Immunocytochemistry/ Immunofluorescence - Anti-Spry-2 antibody (ab85670)

ICC/IF image of ab85670 stained PC12 cells. The cells were 4% PFA fixed (10 min) and then incubated in 1%BSA / 10% normal goat serum / 0.3M glycine in 0.1% PBS-Tween for 1h to permeabilise the cells and block non-specific protein-protein interactions. The cells were then incubated with the antibody (ab85670, 10µg/ml) overnight at +4°C. The secondary antibody (green) was Alexa Fluor® 488 goat anti-rabbit IgG (H+L) used at a 1/1000 dilution for 1h. Alexa Fluor® 594 WGA was used to label plasma membranes (red) at a 1/200 dilution for 1h. DAPI was used to stain the cell nuclei (blue) at a concentration of 1.43µM. This antibody also gave a positive result in 100% methanol fixed (5 min) PC12 cells at 10µg/ml.



Copyright (c) 2012 Abcam plc

Immunohistochemistry (Formalin/PFA-fixed paraffin-embedded sections) - Anti-Spry-2 antibody (ab85670)

IHC image of Spry-2 staining in human skin melanoma formalin fixed paraffin embedded tissue section, performed on a Leica Bond™ system using the standard protocol F. The section was pre-treated using heat mediated antigen retrieval with sodium citrate buffer (pH6, epitope retrieval solution 1) for 20 mins. The section was then incubated with ab85670, 1µg/ml, for 15 mins at room temperature and detected using an HRP conjugated compact polymer system. DAB was used as the chromogen. The section was then counterstained with haematoxylin and mounted with DPX.

For other IHC staining systems (automated and non-automated) customers should optimize variable parameters such as antigen retrieval conditions, primary antibody concentration and antibody incubation times.

Please note: All products are "FOR RESEARCH USE ONLY. NOT FOR USE IN DIAGNOSTIC PROCEDURES"

Our Promise to you: Quality guaranteed and expert technical support

- Replacement or refund for products not performing as stated on the datasheet
- Valid for 12 months from date of delivery

- Response to your inquiry within 24 hours
- We provide support in Chinese, English, French, German, Japanese and Spanish
- Extensive multi-media technical resources to help you
- We investigate all quality concerns to ensure our products perform to the highest standards

If the product does not perform as described on this datasheet, we will offer a refund or replacement. For full details of the Abpromise, please visit <https://www.abcam.co.jp/abpromise> or contact our technical team.

Terms and conditions

- Guarantee only valid for products bought direct from Abcam or one of our authorized distributors