

Anti-Sprouty 4/Spry-4 antibody ab115557

★★★★☆ [1 Abreviews](#) [1 References](#) [画像数 1](#)

製品の概要

製品名	Anti-Sprouty 4/Spry-4 antibody
製品の詳細	Rabbit polyclonal to Sprouty 4/Spry-4
由来種	Rabbit
アプリケーション	適用あり: IHC-P
種交差性	交差種: Human
免疫原	Synthetic peptide corresponding to Human Sprouty 4/Spry-4 aa 300-400 (C terminal) conjugated to keyhole limpet haemocyanin. Database link: NP_112226.2

 [Run BLAST with](#)

 [Run BLAST with](#)

ポジティブ・コントロール Human Heart tissue.

特記事項
The Life Science industry has been in the grips of a reproducibility crisis for a number of years. Abcam is leading the way in addressing this with our range of recombinant monoclonal antibodies and knockout edited cell lines for gold-standard validation. Please check that this product meets your needs before purchasing.

If you have any questions, special requirements or concerns, please send us an inquiry and/or contact our Support team ahead of purchase. Recommended alternatives for this product can be found below, along with publications, customer reviews and Q&As

製品の特性

製品の状態	Liquid
保存方法	Shipped at 4°C. Upon delivery aliquot and store at -20°C. Avoid repeated freeze / thaw cycles.
バッファー	pH: 7.20 Preservative: 0.01% Sodium azide Constituents: 0.424% Potassium phosphate, 0.88% Sodium chloride
精製度	Protein A purified
ポリ/モノ	ポリクローナル
アイソタイプ	IgG

アプリケーション

The Abpromise guarantee

Abpromise保証は、次のテスト済みアプリケーションにおけるab115557の使用に適用されます

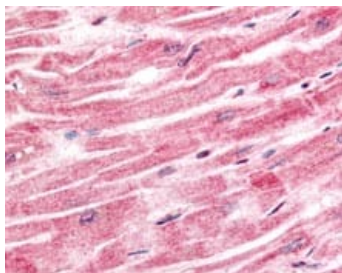
アプリケーションノートには、推奨の開始希釈率がありますが、適切な希釈率につきましてはご検討ください。

アプリケーション	Abreviews	特記事項
IHC-P	★★★★☆ (1)	Use a concentration of 2.5 µg/ml. Perform heat mediated antigen retrieval with citrate buffer pH 6 before commencing with IHC staining protocol.

ターゲット情報

機能	Suppresses the insulin receptor and EGFR-transduced MAPK signaling pathway, but does not inhibit MAPK activation by a constitutively active mutant Ras. Probably impairs the formation of GTP-Ras.
配列類似性	Belongs to the sprouty family. Contains 1 SPR (sprouty) domain.
ドメイン	The Cys-rich domain is responsible for the localization of the protein to the membrane ruffles.
細胞内局在	Cytoplasm. Cell projection > ruffle membrane.

画像



ab115557, at 2.5µg/ml, staining Sprouty 4/Spry-4 in Formalin-fixed, Paraffin-embedded Human heart tissue by Immunohistochemistry followed by biotinylated secondary antibody, alkaline phosphatase-streptavidin and chromogen.

Immunohistochemistry (Formalin/PFA-fixed paraffin-embedded sections) - Anti-Sprouty 4/Spry-4 antibody (ab115557)

Please note: All products are "FOR RESEARCH USE ONLY. NOT FOR USE IN DIAGNOSTIC PROCEDURES"

Our Abpromise to you: Quality guaranteed and expert technical support

- Replacement or refund for products not performing as stated on the datasheet
- Valid for 12 months from date of delivery
- Response to your inquiry within 24 hours
- We provide support in Chinese, English, French, German, Japanese and Spanish
- Extensive multi-media technical resources to help you
- We investigate all quality concerns to ensure our products perform to the highest standards

If the product does not perform as described on this datasheet, we will offer a refund or replacement. For full details of the Abpromise, please visit <https://www.abcam.co.jp/abpromise> or contact our technical team.

Terms and conditions

- Guarantee only valid for products bought direct from Abcam or one of our authorized distributors