

# Anti-Spi2A antibody [MoFo 29.2] ab36772

**1** [References](#) **2** [画像数](#)

### 製品の概要

製品名	Anti-Spi2A antibody [MoFo 29.2]
製品の詳細	Hamster monoclonal [MoFo 29.2] to Spi2A
由来種	Hamster
特異性	ab36772 recognises Serine protease inhibitor 2A, or Serpin 2A (spi2A).
アプリケーション	<b>適用あり:</b> IHC-P, ICC/IF
種交差性	<b>交差種:</b> Mouse, Human
免疫原	Synthetic peptide corresponding to Hamster Spi2A aa 418-436. Sequence: PERSMNFPNGEGASSQRLC

 [Run BLAST with](#)

 [Run BLAST with](#)

### 特記事項

The Life Science industry has been in the grips of a reproducibility crisis for a number of years. Abcam is leading the way in addressing this with our range of recombinant monoclonal antibodies and knockout edited cell lines for gold-standard validation. Please check that this product meets your needs before purchasing.

If you have any questions, special requirements or concerns, please send us an inquiry and/or contact our Support team ahead of purchase. Recommended alternatives for this product can be found below, along with publications, customer reviews and Q&As

### 製品の特性

製品の状態	Liquid
保存方法	Shipped at 4°C. Upon delivery aliquot and store at -20°C. Avoid freeze / thaw cycles.
バッファー	Preservative: 0.05% Sodium azide Constituents: 0.1% BSA, PBS
精製度	Protein A purified
ポリ/モノ	モノクローナル
クローン名	MoFo 29.2
アイソタイプ	IgG2b

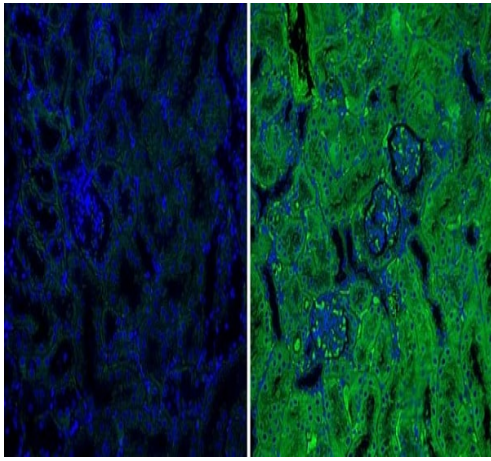
**The Abpromise guarantee**      Abpromise保証は、 次のテスト済みアプリケーションにおけるab36772の使用に適用されます  
アプリケーションノートには、推奨の開始希釈率がありますが、適切な希釈率につきましてはご検討ください。

アプリケーション	Abreviews	特記事項
IHC-P		Use at an assay dependent concentration.
ICC/IF		1/10 - 1/100.

## ターゲット情報

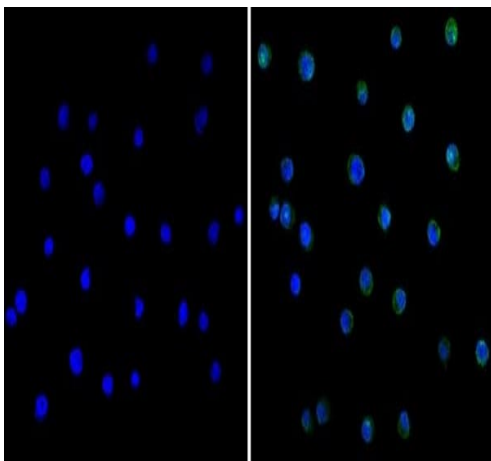
機能	Serine and cysteine protease inhibitor. Can inhibit lysosomal papain-like proteases including the cathepsins B, G, H, K, L and V. Ineffective against elastase, granzyme A, granzyme B, or caspases 3, 8 or 9. Inhibition of cytoplasmic cathepsin B following release from the lysosome may protect cells from apoptosis. This may facilitate the survival of progenitor T-cells and the subsequent development of long term memory CD8 T-cells.
組織特異性	Expressed in bone marrow (particularly hematopoietic stem cells), heart, kidney, liver, lung, skeletal muscle, spleen, testis, thymus and T-cells.
配列類似性	Belongs to the serpin family.
発生段階	T-cell specific expression rises during the differentiation of CD8 T-cell progenitors into memory CD8 T-cells.
ドメイン	The reactive center loop (RCL) extends out from the body of the protein and directs binding to the target protease. The protease cleaves the serpin at the reactive site within the RCL, establishing a covalent linkage between the serpin reactive site and the protease. The resulting inactive serpin-protease complex is highly stable (By similarity). Variability within the reactive center loop (RCL) sequences of Serpina3 paralogs may determine target protease specificity.
細胞内局在	Cytoplasm. Nucleus.

## 画像



Immunohistochemistry (Formalin/PFA-fixed paraffin-embedded sections) - Anti-Spi2A antibody [MoFo 29.2] (ab36772)

Immunofluorescent analysis of Spi2A (green) showing staining in the cytoplasm of mouse kidney tissue (right) compared to a negative control without primary antibody (left). Formalin-fixed tissue was permeabilized with 0.1% Triton X-100 in TBS for 5-10 minutes and blocked with 3% BSA-PBS for 30 minutes at room temperature. Tissue was probed with ab36772 in 3% BSA-PBS at a dilution of 1:20 and incubated overnight at 4°C in a humidified chamber. Tissue was washed with PBST and incubated with a DyLight®-conjugated secondary antibody in PBS at room temperature in the dark. Nuclei were stained with Hoechst or DAPI (blue). Images were taken at a magnification of 60x.



Immunocytochemistry/ Immunofluorescence - Anti-Spi2A antibody [MoFo 29.2] (ab36772)

Immunofluorescent analysis of Spi2A (green) showing staining in the cytoplasm and nucleus of Jurkat cells (right) compared to a negative control without primary antibody (left). Formalin-fixed cells were permeabilized with 0.1% Triton X-100 in TBS for 5-10 minutes and blocked with 3% BSA-PBS for 30 minutes at room temperature. Cells were probed with ab36772 in 3% BSA-PBS at a dilution of 1:20 and incubated overnight at 4°C in a humidified chamber. Cells were washed with PBST and incubated with a DyLight®-conjugated secondary antibody in PBS at room temperature in the dark. Nuclei were stained with Hoechst or DAPI (blue). Images were taken at a magnification of 60x.

**Please note:** All products are "FOR RESEARCH USE ONLY. NOT FOR USE IN DIAGNOSTIC PROCEDURES"

### Our Abpromise to you: Quality guaranteed and expert technical support

- Replacement or refund for products not performing as stated on the datasheet
- Valid for 12 months from date of delivery
- Response to your inquiry within 24 hours
- We provide support in Chinese, English, French, German, Japanese and Spanish
- Extensive multi-media technical resources to help you
- We investigate all quality concerns to ensure our products perform to the highest standards

If the product does not perform as described on this datasheet, we will offer a refund or replacement. For full details of the Abpromise, please visit <https://www.abcam.co.jp/abpromise> or contact our technical team.

## Terms and conditions

---

- Guarantee only valid for products bought direct from Abcam or one of our authorized distributors