


Anti-SPF45 antibody ab114968

1 References [画像数 3](#)

製品の概要

製品名	Anti-SPF45 antibody
製品の詳細	Rabbit polyclonal to SPF45
由来種	Rabbit
アプリケーション	適用あり: IP, IHC-P
種交差性	交差種: Mouse, Human 交差が予測される動物種: Rat, Guinea pig, Cow, Dog, Pig, Xenopus laevis, Chimpanzee, Rhesus monkey, Orangutan 
免疫原	Synthetic peptide corresponding to Human SPF45 aa 25-75. Database link: NP_116294.1
ポジティブ・コントロール	WB: HeLa whole cell lysate. IHC-P: Human ovarian carcinoma tissue, mouse plasmacytoma.
特記事項	<p>The Life Science industry has been in the grips of a reproducibility crisis for a number of years. Abcam is leading the way in addressing this with our range of recombinant monoclonal antibodies and knockout edited cell lines for gold-standard validation. Please check that this product meets your needs before purchasing.</p> <p>If you have any questions, special requirements or concerns, please send us an inquiry and/or contact our Support team ahead of purchase. Recommended alternatives for this product can be found below, along with publications, customer reviews and Q&As</p>

製品の特性

製品の状態	Liquid
保存方法	Shipped at 4°C. Upon delivery aliquot and store at -20°C. Avoid freeze / thaw cycles.
バッファー	pH: 7 Preservative: 0.09% Sodium azide Constituent: 99% Tris citrate/phosphate
精製度	pH 7 to 8. Immunogen affinity purified
ポリ/モノ	ポリクローナル
アイソタイプ	IgG

アプリケーション

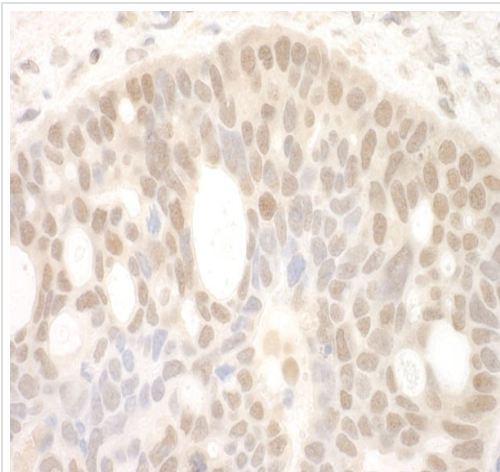
The Abpromise guarantee **Abpromise保証は、**次のテスト済みアプリケーションにおけるab114968の使用に適用されます
アプリケーションノートには、推奨の開始希釈率がありますが、適切な希釈率につきましてはご検討ください。

アプリケーション	Abreviews	特記事項
IP		Use at 2-5 µg/mg of lysate.
IHC-P		1/500 - 1/2000. Perform heat mediated antigen retrieval with citrate buffer pH 6 before commencing with IHC staining protocol.

ターゲット情報

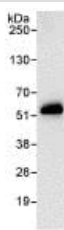
機能	Splice factor that binds to the single stranded 3'AG at the exon/intron border and promotes its utilization in the second catalytic step. Involved in the regulation of alternative splicing and the utilization of cryptic splice sites. Promotes the utilization of a cryptic splice site created by the beta-110 mutation in the HBB gene. The resulting frameshift leads to sickle cell anemia.
配列類似性	Contains 1 G-patch domain. Contains 1 RRM (RNA recognition motif) domain.
細胞内局在	Nucleus.

画像



Immunohistochemistry (Formalin/PFA-fixed paraffin-embedded sections) analysis of human ovarian carcinoma tissue labelling SPF45 with ab114968 at 1/1000 (1 µg/ml). Detection: DAB.

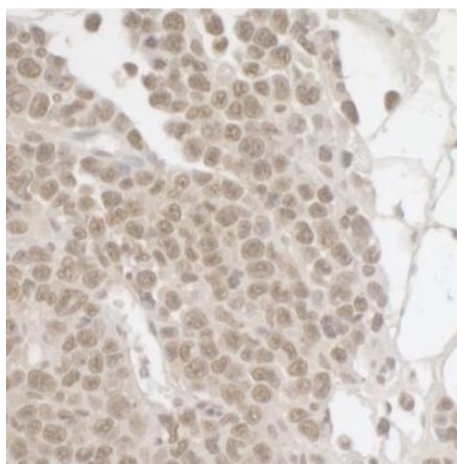
Immunohistochemistry (Formalin/PFA-fixed paraffin-embedded sections) - Anti-SPF45 antibody (ab114968)



Immunoprecipitation - Anti-SPF45 antibody
(ab114968)

Detection of SPF45 by Western Blot of Immunoprecipitate.
anti-SPF45 at 0.4µg/ml staining SPF45 in HeLa whole cell lysate
immunoprecipitated using ab114968 at 3µg/mg lysate (1 mg/IP;
20% of IP loaded/lane).

Detection: Chemiluminescence with exposure time of 10 seconds.



Immunohistochemistry (Formalin/PFA-fixed paraffin-
embedded sections) - Anti-SPF45 antibody
(ab114968)

Immunohistochemistry (Formalin/PFA-fixed paraffin-embedded
sections) analysis of mouse plasmacytoma tissue labelling SPF45
with ab114968 at 1/500 (2µg/ml). Detection: DAB.

Please note: All products are "FOR RESEARCH USE ONLY. NOT FOR USE IN DIAGNOSTIC PROCEDURES"

Our Abpromise to you: Quality guaranteed and expert technical support

- Replacement or refund for products not performing as stated on the datasheet
- Valid for 12 months from date of delivery
- Response to your inquiry within 24 hours
- We provide support in Chinese, English, French, German, Japanese and Spanish
- Extensive multi-media technical resources to help you
- We investigate all quality concerns to ensure our products perform to the highest standards

If the product does not perform as described on this datasheet, we will offer a refund or replacement. For full details of the Abpromise, please visit <https://www.abcam.co.jp/abpromise> or contact our technical team.

Terms and conditions

- Guarantee only valid for products bought direct from Abcam or one of our authorized distributors