

### Anti-Spermine antibody ab26975

★★★★★ [3 Abreviews](#) [5 References](#) [画像数 1](#)

#### 製品の概要

製品名	Anti-Spermine antibody
製品の詳細	Rabbit polyclonal to Spermine
由来種	Rabbit
特異性	This antibody reacts with spermine. Cross-reacts with spermidine 100%.
アプリケーション	<b>適用あり:</b> ICC/IF, WB
種交差性	<b>交差種:</b> Species independent
免疫原	Spermine conjugated to KLH.
特記事項	<p>Polyamines are substrates for transglutaminase enzymes and can be covalently conjugated to proteins. In this case Western Blot and other methods can be able to detect polyaminated proteins.</p> <p>The Life Science industry has been in the grips of a reproducibility crisis for a number of years. Abcam is leading the way in addressing this with our range of recombinant monoclonal antibodies and knockout edited cell lines for gold-standard validation. Please check that this product meets your needs before purchasing.</p> <p>If you have any questions, special requirements or concerns, please send us an inquiry and/or contact our Support team ahead of purchase. Recommended alternatives for this product can be found below, along with publications, customer reviews and Q&amp;As</p>

#### 製品の特性

製品の状態	Liquid
保存方法	Shipped at 4°C. Store at +4°C short term (1-2 weeks). Upon delivery aliquot. Store at -20°C long term. Avoid freeze / thaw cycle.
バッファー	Constituent: Whole serum
精製度	Whole antiserum
一次抗体 備考	Polyamines are substrates for transglutaminase enzymes and can be covalently conjugated to proteins. In this case Western Blot and other methods can be able to detect polyaminated proteins.
ポリ/モノ	ポリクローナル

## アプリケーション

## The Abpromise guarantee

**Abpromise保証は、**次のテスト済みアプリケーションにおけるab26975の使用に適用されます

アプリケーションノートには、推奨の開始希釈率がありますが、適切な希釈率につきましてはご検討ください。

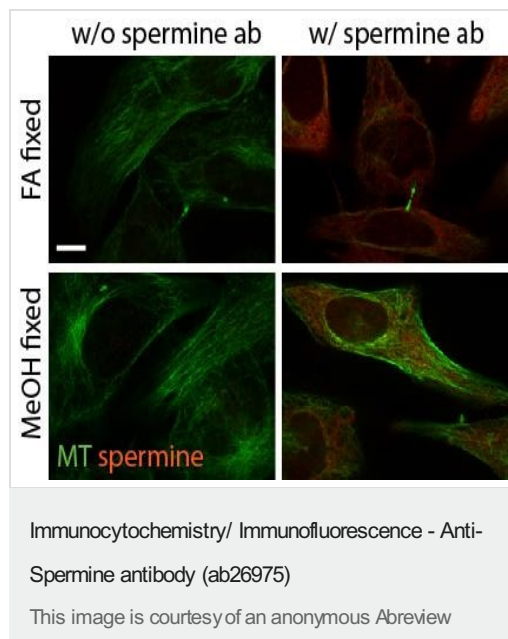
アプリケーション	Abreviews	特記事項
ICC/IF	★★★★★ (1)	Use at an assay dependent concentration.
WB		1/1200 - 1/5000.

## ターゲット情報

## 関連性

Spermine, a polyamine, is a positively charged compound found in living cells and can cause conformational changes in DNA via charge and solubility mechanisms which can affect gene expression cell differentiation. Spermine may be linked to the development of cancer.

## 画像



ab26975 staining spermine in the Human HeLa cells by ICC/IF (Immunocytochemistry/immunofluorescence). Cells were fixed with 4% formaldehyde for 15 minutes at room temperature (Upper images) or iced methanol of 3 minutes (Lower images) and blocked with 2% BSA for 30 minutes at 27°C. Samples were incubated with primary antibody (1/100) for 1 hour at 27°C. An Alexa Fluor®568-conjugated Donkey anti-rabbit polyclonal (1/1000) was used as the secondary antibody. Samples handled without ab26975 were used as negative controls (Left-hand panels).

**Please note:** All products are "FOR RESEARCH USE ONLY. NOT FOR USE IN DIAGNOSTIC PROCEDURES"

## Our Abpromise to you: Quality guaranteed and expert technical support

- Replacement or refund for products not performing as stated on the datasheet
- Valid for 12 months from date of delivery
- Response to your inquiry within 24 hours

- We provide support in Chinese, English, French, German, Japanese and Spanish
- Extensive multi-media technical resources to help you
- We investigate all quality concerns to ensure our products perform to the highest standards

If the product does not perform as described on this datasheet, we will offer a refund or replacement. For full details of the Abpromise, please visit <https://www.abcam.co.jp/abpromise> or contact our technical team.

#### **Terms and conditions**

---

- Guarantee only valid for products bought direct from Abcam or one of our authorized distributors