

Anti-Spastin antibody [Sp 6C6] ab77144

KO 評価済

★★★★☆ 1 Abreviews 5 References 画像数 4

製品の概要

| | |
|--------------|---|
| 製品名 | Anti-Spastin antibody [Sp 6C6] |
| 製品の詳細 | Mouse monoclonal [Sp 6C6] to Spastin |
| 由来種 | Mouse |
| アプリケーション | 適用あり: IP, WB |
| 種交差性 | 交差種: Rat, Human |
| 免疫原 | Recombinant full length protein (Human) |
| ポジティブ・コントロール | WB: HEK293T cell lysate; Rat brain lysate. IP: HAP1 cells |
| 特記事項 | <p>The Life Science industry has been in the grips of a reproducibility crisis for a number of years. Abcam is leading the way in addressing this with our range of recombinant monoclonal antibodies and knockout edited cell lines for gold-standard validation. Please check that this product meets your needs before purchasing.</p> <p>If you have any questions, special requirements or concerns, please send us an inquiry and/or contact our Support team ahead of purchase. Recommended alternatives for this product can be found below, along with publications, customer reviews and Q&As</p> |

製品の特性

| | |
|--------|---|
| 製品の状態 | Liquid |
| 保存方法 | Shipped at 4°C. Upon delivery aliquot and store at -20°C or -80°C. Avoid repeated freeze / thaw cycles. |
| バッファー | Preservative: 0.02% Sodium azide Constituent: 99.98% PBS |
| 精製度 | Protein A/G purified |
| ポリ/モノ | モノクローナル |
| クローン名 | Sp 6C6 |
| ミエローマ | Sp2/0-Ag14 |
| アイソタイプ | IgG2a |

アプリケーション

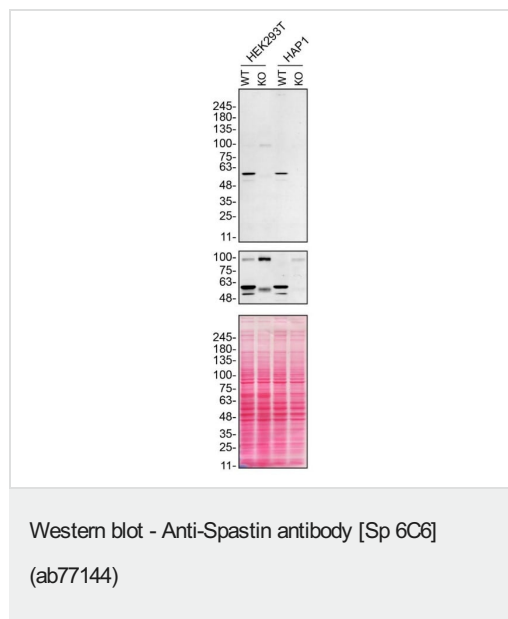
The Abpromise guarantee Abpromise保証は、 次のテスト済みアプリケーションにおけるab77144の使用に適用されます
アプリケーションノートには、推奨の開始希釈率がありますが、適切な希釈率につきましてはご検討ください。

| アプリケーション | Abreviews | 特記事項 |
|----------|-----------|--|
| IP | | Use at an assay dependent concentration. |
| WB | ★★★★★ (1) | 1/500. Predicted molecular weight: 68 kDa. |

ターゲット情報

| | |
|-------|---|
| 関連性 | Spastin is thought have a role in microtubule dynamics through its function as a microtubule severing protein. It is localised to the centrosome of neuronal cells but is not found in glial cells. Mutation in the ATPase binding domain of spastin causes hereditary spastic paraplegias (HSP), a large group of clinically similar disorders. Mutant forms of spastin are generally found throughout the cytoplasm rather than within the nucleus. |
| 細胞内局在 | Cytoplasm, Cytoskeleton, Endoplasmic reticulum, Endosome, Membrane, Microtubule, Nucleus |

画像



All lanes : Anti-Spastin antibody [Sp 6C6] (ab77144) at 1/500 dilution

Lane 1 : Wild-type HEK-293T cell lysate

Lane 2 : SPAST knockout HEK293T cell lysate

Lane 3 : Wild-type HAP1 cell lysate

Lane 4 : SPAST knockout HAP1 cell lysate

Lysates/proteins at 20 µg per lane.

Secondary

All lanes : goat anti-rabbit HRP at 0.2 µg/ml

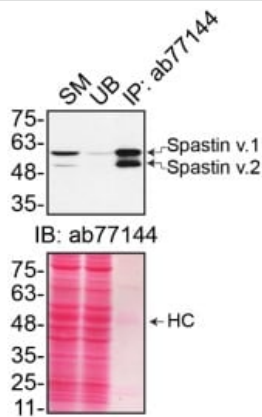
Performed under reducing conditions.

Predicted band size: 68 kDa

ab77144 was shown to react with SPAST in wild-type HEK293T cells in Western blot with loss of signal observed in SPAST knockout cell line **ab267238** (SPAST knockout cell lysate **ab258698**). Wild-type HEK293T and SPAST knockout cell lysates

were subjected to SDS-PAGE. Membranes were blocked in 5% milk in TBST for 1 hr before incubation with ab77144 overnight at 4 °C at a 1/500 dilution. Blots were incubated with goat anti-rabbit HRP secondary antibodies at 0.2µg/mL before imaging.

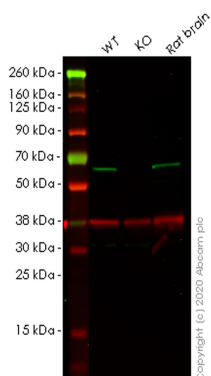
These data were provided by YCharOS Inc., an open science company with the mission of characterizing commercially available antibody reagents for all human proteins. Abcam and YCharOS are working together to help address the reproducibility crisis by enabling the life science community to better evaluate commercially available antibodies.



Immunoprecipitation - Anti-Spastin antibody [Sp 6C6] (ab77144)

Immunoprecipitation of SPAST in HAP1 cells. Lysates were prepared and immunoprecipitation was performed using 1µ of ab77144 pre-coupled to Protein A beads. Samples were washed and processed for western blot with ab77144 at 1/500.

This data was kindly provided by the YCharOS Inc., an open science company with the mission of characterizing every commercially available antibody reagent. Abcam are working with YCharOS to support their mission of antibody characterisation using knock out cell lines.



Western blot - Anti-Spastin antibody [Sp 6C6] (ab77144)

All lanes : Anti-Spastin antibody [Sp 6C6] (ab77144) at 1/500 dilution

Lane 1 : Wild-type HEK-293T cell lysate

Lane 2 : SPAST knockout HEK293T cell lysate

Lane 3 : Rat brain tissue lysate

Lysates/proteins at 20 µg per lane.

Secondary

All lanes : Goat Anti-Rabbit IgG H&L (IRDye® 680RD) preadsorbed ([ab216777](#)) at 1/10000 dilution

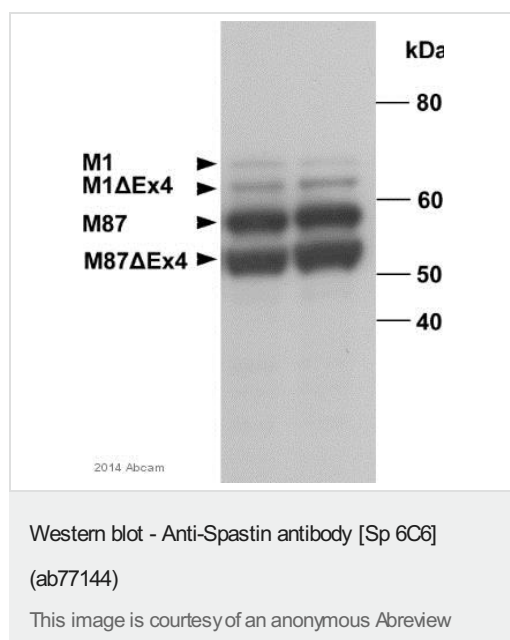
Predicted band size: 68 kDa

Observed band size: 52 kDa

Lanes 1-3: Merged signal (red and green). Green - ab77144

observed at 52 kDa. Red - loading control **ab181602** observed at 36 kDa.

ab77144 Anti-Spastin antibody [Sp 6C6] was shown to specifically react with Spastin in wild-type HEK293T cells. Loss of signal was observed when knockout cell line **ab267238** (knockout cell lysate **ab258698**) was used. Wild-type and Spastin knockout samples were subjected to SDS-PAGE. ab77144 and Anti-GAPDH antibody[EPR16891] - Loading Control (**ab181602**) were incubated overnight at 4°C at 1 in 500 dilution and 1 in 20000 dilution respectively. Blots were developed with Goat anti-Rabbit IgG H&L (IRDye® 680RD) preadsorbed (**ab216777**) and Goat anti-Mouse IgG H&L (IRDye® 800CW) preadsorbed (**ab216772**) secondary antibodies at 1 in 20000 dilution for 1 hour at room temperature before imaging.



All lanes : Anti-Spastin antibody [Sp 6C6] (ab77144) at 1/1500 dilution

All lanes : Human induced pluripotent stem cell derived neuron whole cell lysate

Lysates/proteins at 20 µg per lane.

Secondary

All lanes : HRP-conjugated goat anti-mouse IgG polyclonal at 1/10 dilution

Developed using the ECL technique.

Performed under reducing conditions.

Predicted band size: 68 kDa

Observed band size: 54,58,62,68 kDa

Exposure time: 12 minutes

9% SDS-PAGE.

Please note: All products are "FOR RESEARCH USE ONLY. NOT FOR USE IN DIAGNOSTIC PROCEDURES"

Our Abpromise to you: Quality guaranteed and expert technical support

- Replacement or refund for products not performing as stated on the datasheet
- Valid for 12 months from date of delivery
- Response to your inquiry within 24 hours

- We provide support in Chinese, English, French, German, Japanese and Spanish
- Extensive multi-media technical resources to help you
- We investigate all quality concerns to ensure our products perform to the highest standards

If the product does not perform as described on this datasheet, we will offer a refund or replacement. For full details of the Abpromise, please visit <https://www.abcam.co.jp/abpromise> or contact our technical team.

Terms and conditions

- Guarantee only valid for products bought direct from Abcam or one of our authorized distributors