


### Anti-Sp5 antibody ab36593

★★★★☆ [3 Abreviews](#) [3 References](#) [画像数 2](#)

#### 製品の概要

製品名	Anti-Sp5 antibody
製品の詳細	Rabbit polyclonal to Sp5
由来種	Rabbit
特異性	From Jan 2024, QC testing of replenishment batches of this polyclonal changed. All tested and expected application and reactive species combinations are still covered by our Abcam product promise. However, we no longer test all applications. For more information on a specific batch, please contact our Scientific Support who will be happy to help.
アプリケーション	<b>適用あり:</b> WB, ICC/IF
種交差性	<b>交差種:</b> Human <b>交差が予測される動物種:</b> Mouse, Chicken 
免疫原	Synthetic peptide corresponding to Human Sp5 aa 50-150 conjugated to keyhole limpet haemocyanin. (Peptide available as <a href="#">ab36592</a> )
ポジティブ・コントロール	This antibody gave a positive signal in the following whole cell lysates: HeLa, Jurkat, A431, HEK293, HepG2, MCF7, SHSY-5Y and U20S.
特記事項	<p>The Life Science industry has been in the grips of a reproducibility crisis for a number of years. Abcam is leading the way in addressing this with our range of recombinant monoclonal antibodies and knockout edited cell lines for gold-standard validation. Please check that this product meets your needs before purchasing.</p> <p>If you have any questions, special requirements or concerns, please send us an inquiry and/or contact our Support team ahead of purchase. Recommended alternatives for this product can be found below, along with publications, customer reviews and Q&amp;As</p>

#### 製品の特性

製品の状態	Liquid
保存方法	Shipped at 4°C. Store at +4°C short term (1-2 weeks). Upon delivery aliquot. Store at -20°C or -80°C. Avoid freeze / thaw cycle.
バッファー	pH: 7.40 Preservative: 0.02% Sodium azide Constituent: PBS

Batches of this product that have a concentration < 1mg/ml may have BSA added as a stabilising agent. If you would like information about the formulation of a specific lot, please contact our scientific support team who will be happy to help.

**精製度** Immunogen affinity purified  
**ポリ/モノ** ポリクローナル  
**アイソタイプ** IgG

## アプリケーション

**The Abpromise guarantee** **Abpromise保証は、次のテスト済みアプリケーションにおけるab36593の使用に適用されます**  
 アプリケーションノートには、推奨の開始希釈率がありますが、適切な希釈率につきましてはご検討ください。

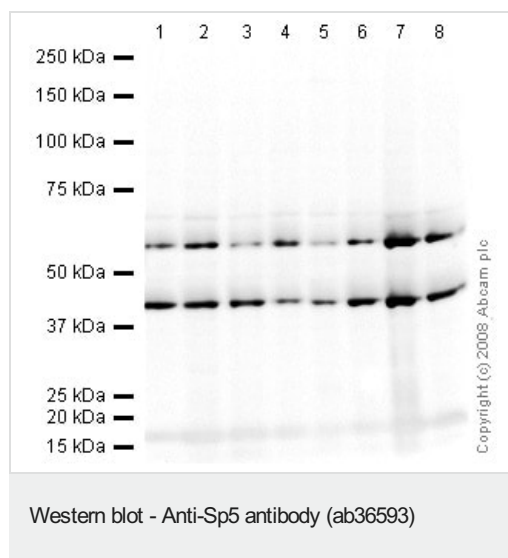
アプリケーション	Abreviews	特記事項
WB	★★★★★ (1)	Use a concentration of 1 µg/ml. Detects a band of approximately 42 kDa (predicted molecular weight: 42 kDa).
ICC/IF		Use a concentration of 5 µg/ml.

## ターゲット情報

**関連性** Sp5 is a member of the Sp family of zinc finger transcription factors. Like other family members, the Sp5 protein contains a Cys2His2 zinc finger DNA binding domain at the C-terminus. Elevated expression of Sp5 has been noted in several human tumors including hepatocellular carcinoma, gastric cancer and colon cancer.

**細胞内局在** Nuclear

## 画像



**All lanes :** Anti-Sp5 antibody (ab36593) at 1 µg/ml

**Lane 1 :** HeLa (Human epithelial carcinoma cell line) Whole Cell Lysate

**Lane 2 :** Jurkat (Human T cell lymphoblast-like cell line) Whole Cell Lysate

**Lane 3 :** A431 (Human epithelial carcinoma cell line) Whole Cell Lysate

**Lane 4 :** HEK293 Human embryonic kidney cell line Whole Cell Lysate

**Lane 5 :** HepG2 (Human hepatocellular liver carcinoma cell line) Whole Cell Lysate

**Lane 6 :** MCF7 (Human breast adenocarcinoma cell line) Whole Cell Lysate

**Lane 7** : SHSY-5Y (Human neuroblastoma cell line) Whole Cell Lysate

**Lane 8** : U2OS (Human osteosarcoma cell line) Whole Cell Lysate

Lysates/proteins at 10 µg per lane.

### Secondary

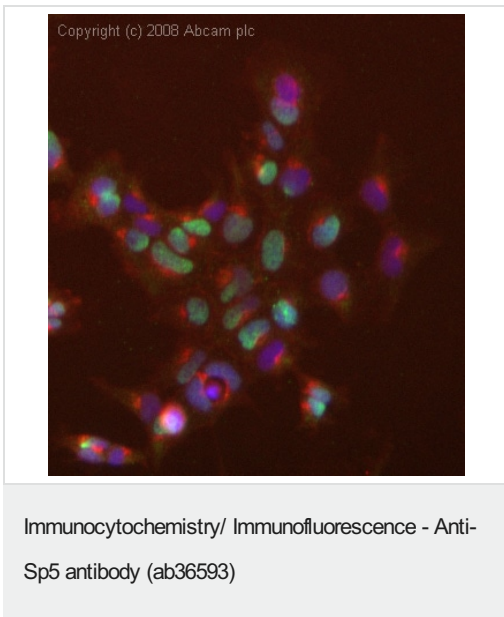
**All lanes** : Goat polyclonal to Rabbit IgG - H&L - Pre-Adsorbed (HRP) at 1/3000 dilution

Performed under reducing conditions.

**Predicted band size:** 42 kDa

**Observed band size:** 42 kDa

**Additional bands at:** 58 kDa. We are unsure as to the identity of these extra bands.



ICC/IF image of ab36593 stained human HEK 293 cells. The cells were 4% PFA fixed (10 min), permeabilised in 0.1% PBS-Tween (20 min) and incubated with the antibody (ab36593, 5µg/ml) for 1h at room temperature. 1%BSA / 10% normal goat serum / 0.3M glycine was used to block non-specific protein-protein interactions. The secondary antibody (green) was Alexa Fluor® 488 goat anti-rabbit IgG (H+L) used at a 1/1000 dilution for 1h. Alexa Fluor® 594 WGA was used to label plasma membranes (red). DAPI was used to stain the cell nuclei (blue). This antibody also gave a positive IF result in HeLa and MCF7 cells.

**Please note:** All products are "FOR RESEARCH USE ONLY. NOT FOR USE IN DIAGNOSTIC PROCEDURES"

### Our Abpromise to you: Quality guaranteed and expert technical support

- Replacement or refund for products not performing as stated on the datasheet
- Valid for 12 months from date of delivery
- Response to your inquiry within 24 hours
- We provide support in Chinese, English, French, German, Japanese and Spanish
- Extensive multi-media technical resources to help you
- We investigate all quality concerns to ensure our products perform to the highest standards

If the product does not perform as described on this datasheet, we will offer a refund or replacement. For full details of the Abpromise, please visit <https://www.abcam.co.jp/abpromise> or contact our technical team.

## Terms and conditions

---

- Guarantee only valid for products bought direct from Abcam or one of our authorized distributors