


Anti-SOX6 antibody ab125196

1 [References](#) **2** [画像数](#)

製品の概要

製品名	Anti-SOX6 antibody
製品の詳細	Rabbit polyclonal to SOX6
由来種	Rabbit
アプリケーション	適用あり: WB, IP
種交差性	交差種: Human 交差が予測される動物種: Rabbit, Horse, Guinea pig, Cow, Dog, Pig, Chimpanzee, Rhesus monkey, Gorilla, Orangutan, Elephant 
免疫原	Synthetic peptide, corresponding to a region within amino acids 778-828 of Human SOX6 (EAW68458.1).
ポジティブ・コントロール	293T, HeLa and Jurkat whole cell lysates.
特記事項	<p>The Life Science industry has been in the grips of a reproducibility crisis for a number of years. Abcam is leading the way in addressing this with our range of recombinant monoclonal antibodies and knockout edited cell lines for gold-standard validation. Please check that this product meets your needs before purchasing.</p> <p>If you have any questions, special requirements or concerns, please send us an inquiry and/or contact our Support team ahead of purchase. Recommended alternatives for this product can be found below, along with publications, customer reviews and Q&As</p>

製品の特性

製品の状態	Liquid
保存方法	Shipped at 4°C. Upon delivery aliquot and store at -20°C. Avoid freeze / thaw cycles.
バッファー	<p>pH: 7</p> <p>Preservative: 0.09% Sodium azide</p> <p>Constituent: 99% Tris citrate/phosphate</p> <p>pH 7 to 8.</p>
精製度	Immunogen affinity purified
特記事項 (精製)	ab125196 was affinity purified using an epitope specific to SOX6 immobilized on a solid support.
ポリ/モノ	ポリクローナル

アイソタイプIgG

アプリケーション

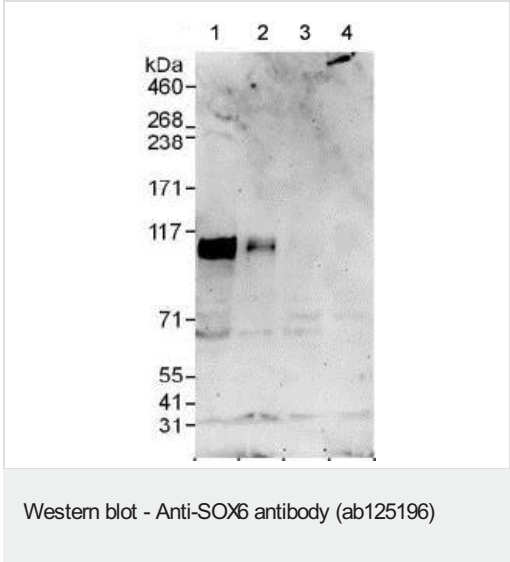
The Abpromise guarantee **Abpromise保証は、** 次のテスト済みアプリケーションにおけるab125196の使用に適用されます
アプリケーションノートには、推奨の開始希釈率がありますが、適切な希釈率につきましてはご検討ください。

アプリケーション	Abreviews	特記事項
WB		1/1000 - 1/5000. Predicted molecular weight: 92 kDa.
IP		Use at 2-10 µg/mg of lysate.

ターゲット情報

機能	Transcriptional activator. Binds specifically to the DNA sequence 5'-AACAAAT-3'. Plays a key role in several developmental processes, including neurogenesis and skeleton formation.
組織特異性	Expressed in a wide variety of tissues, most abundantly in skeletal muscle.
配列類似性	Contains 1 HMG box DNA-binding domain.
翻訳後修飾	Sumoylation inhibits the transcriptional activity.
細胞内局在	Nucleus.

画像



All lanes : Anti-SOX6 antibody (ab125196) at 0.4 µg/ml

Lane 1 : 293T whole cell lysate at 50 µg

Lane 2 : 293T whole cell lysate at 15 µg

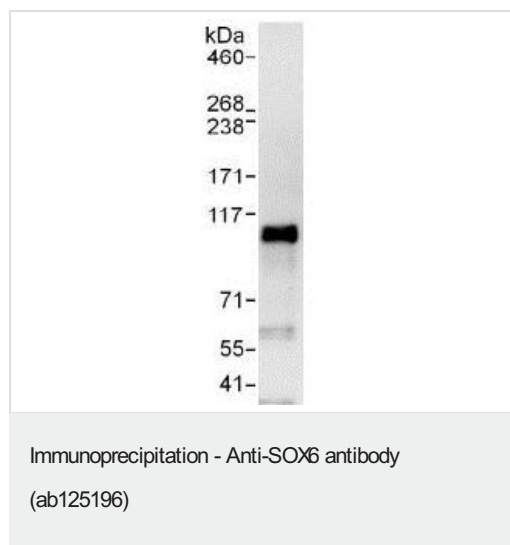
Lane 3 : HeLa whole cell lysate at 50 µg

Lane 4 : Jurkat whole cell lysate at 50 µg

Developed using the ECL technique.

Predicted band size: 92 kDa

Exposure time: 3 minutes



Detection of SOX6 by Western Blot of Immunoprecipitate.

ab125196 at 1 µg/ml staining SOX6 in HeLa whole cell lysate
immunoprecipitated using ab125196 at 6 µg/mg lysate (1 mg/IP;
20% of IP loaded/lane).

Detection: Chemiluminescence with exposure time of 10 seconds.

Please note: All products are "FOR RESEARCH USE ONLY. NOT FOR USE IN DIAGNOSTIC PROCEDURES"

Our Abpromise to you: Quality guaranteed and expert technical support

- Replacement or refund for products not performing as stated on the datasheet
- Valid for 12 months from date of delivery
- Response to your inquiry within 24 hours
- We provide support in Chinese, English, French, German, Japanese and Spanish
- Extensive multi-media technical resources to help you
- We investigate all quality concerns to ensure our products perform to the highest standards

If the product does not perform as described on this datasheet, we will offer a refund or replacement. For full details of the Abpromise, please visit <https://www.abcam.co.jp/abpromise> or contact our technical team.

Terms and conditions

- Guarantee only valid for products bought direct from Abcam or one of our authorized distributors