

Anti-SOX1 antibody [EPR4766] ab109290

リコンビナント **RabMAb**

★★★★★ **4 Abreviews** **16 References** 画像数 **4**

製品の概要

製品名	Anti-SOX1 antibody [EPR4766]
製品の詳細	Rabbit monoclonal [EPR4766] to SOX1
由来種	Rabbit
アプリケーション	適用あり: WB, ICC/IF, Flow Cyt (Intra) 適用なし: IP
種交差性	交差種: Mouse, Rat, Human
免疫原	Synthetic peptide. This information is proprietary to Abcam and/or its suppliers.
特記事項	This product is a recombinant monoclonal antibody, which offers several advantages including: <ul style="list-style-type: none"> - High batch-to-batch consistency and reproducibility - Improved sensitivity and specificity - Long-term security of supply - Animal-free production For more information see here . Our RabMAb [®] technology is a patented hybridoma-based technology for making rabbit monoclonal antibodies. For details on our patents, please refer to RabMAb[®] patents .

製品の特性

製品の状態	Liquid
保存方法	Shipped at 4°C. Store at +4°C short term (1-2 weeks). Upon delivery aliquot. Store at -20°C. Avoid freeze / thaw cycle.
バッファー	pH: 7.20 Preservative: 0.01% Sodium azide Constituents: 0.05% BSA, 40% Glycerol (glycerin, glycerine), 59% PBS
精製度	Protein A purified
ポリ/モノ	モノクローナル
クローン名	EPR4766
アイソタイプ	IgG

アプリケーション

The Abpromise guarantee Abpromise保証は、 次のテスト済みアプリケーションにおけるab109290の使用に適用されます
アプリケーションノートには、推奨の開始希釈率がありますが、適切な希釈率につきましてはご検討ください。

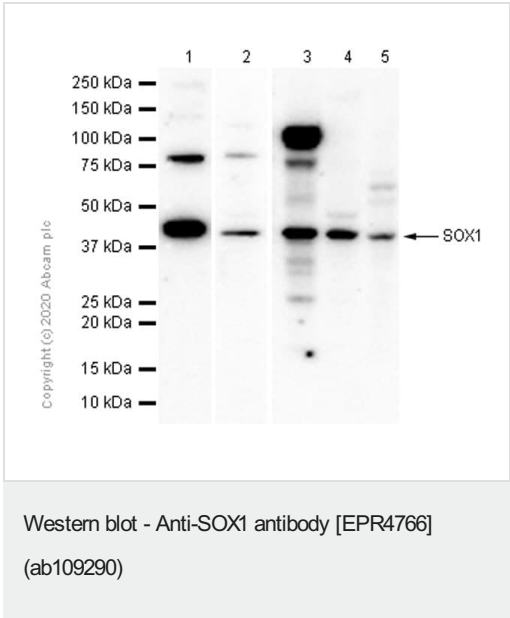
アプリケーション	Abreviews	特記事項
WB		1/1000. Detects a band of approximately 40 kDa (predicted molecular weight: 39 kDa).
ICC/IF	★ ★ ★ ★ ★ (1)	1/100.
Flow Cyt (Intra)		1/100. <u>ab172730</u> - Rabbit monoclonal IgG, is suitable for use as an isotype control with this antibody.

追加情報 Is unsuitable for IP.

ターゲット情報

機能 Transcriptional activator.
組織特異性 Mainly expressed in the developing central nervous system.
配列類似性 Contains 1 HMG box DNA-binding domain.
細胞内局在 Nucleus.

画像



All lanes : Anti-SOX1 antibody [EPR4766] (ab109290) at 1/1000 dilution (Purified)

Lane 1 : NCCIT (Human pluripotent embryonic carcinoma epithelial cell) whole cell lysate

Lane 2 : Mouse brain lysate

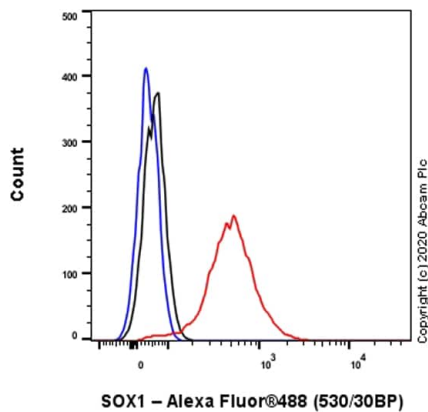
Lane 3 : Neuro-2a (Mouse neuroblastoma neuroblast) whole cell lysate

Lane 4 : Rat cerebral cortex lysate

Lane 5 : C6 (Rat glial tumor glial cell) whole cell lysate

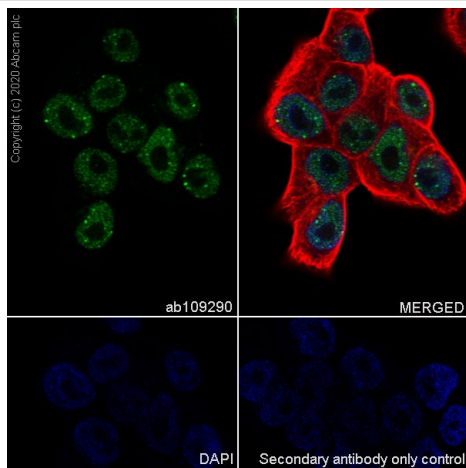
Secondary
All lanes : Goat Anti-Rabbit IgG (HRP) with minimal cross-reactivity with human IgG at 1/2000 dilution

Predicted band size: 39 kDa



Flow Cytometry (Intracellular) - Anti-SOX1 antibody
[EPR4766] (ab109290)

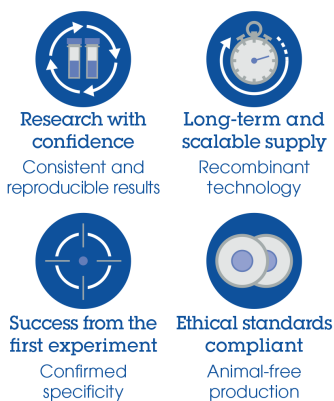
Flow Cytometry analysis of NCCIT (Human pluripotent embryonic carcinoma epithelial cell) cells labelling SOX1 with Purified ab109290 at 1:100 dilution (10 µg/ml) (Red). Cells were fixed with 4% Paraformaldehyde and permeabilised with 90% Methanol. A Goat anti rabbit IgG (Alexa Fluor® 488, **ab150077**) secondary antibody was used at 1:2000. Isotype control - Rabbit monoclonal IgG (Black). Unlabelled control - Cell without incubation with primary antibody and secondary antibody (Blue).



Immunocytochemistry/ Immunofluorescence - Anti-SOX1 antibody [EPR4766] (ab109290)

Immunocytochemistry analysis of NCCIT (Human pluripotent embryonic carcinoma epithelial cell) cells labeling SOX1 with Purified ab109290 at 1:500 dilution (2 µg/ml). Cells were fixed in 4% Paraformaldehyde and permeabilized with 0.1% tritonX-100. Cells were counterstained with Ab195889 Anti-alpha Tubulin antibody [DM1A] - Microtubule Marker (Alexa Fluor® 594) 1:200 (2.5 µg/ml). Goat anti rabbit IgG (Alexa Fluor® 488, **ab150077**) was used as the secondary antibody at 1:1000 (2 µg/ml) dilution. DAPI (blue) was used as nuclear counterstain. PBS instead of the primary antibody was used as the secondary antibody only control.

Why choose a recombinant antibody?



Anti-SOX1 antibody [EPR4766] (ab109290)

Please note: All products are "FOR RESEARCH USE ONLY. NOT FOR USE IN DIAGNOSTIC PROCEDURES"

Our Abpromise to you: Quality guaranteed and expert technical support

- Replacement or refund for products not performing as stated on the datasheet
- Valid for 12 months from date of delivery
- Response to your inquiry within 24 hours

- We provide support in Chinese, English, French, German, Japanese and Spanish
- Extensive multi-media technical resources to help you
- We investigate all quality concerns to ensure our products perform to the highest standards

If the product does not perform as described on this datasheet, we will offer a refund or replacement. For full details of the Abpromise, please visit <https://www.abcam.co.jp/abpromise> or contact our technical team.

Terms and conditions

- Guarantee only valid for products bought direct from Abcam or one of our authorized distributors