


Anti-SOS2 antibody ab85831

画像数 2

製品の概要

製品名	Anti-SOS2 antibody
製品の詳細	Rabbit polyclonal to SOS2
由来種	Rabbit
アプリケーション	適用あり: WB, IP
種交差性	交差種: Mouse, Human 交差が予測される動物種: Rabbit, Horse, Guinea pig, Dog, Chimpanzee, Gorilla, Chinese hamster, Orangutan, Platypus, Elephant 
免疫原	Synthetic peptide corresponding to Human SOS2 aa 1250-1350. Database link: Q07890
ポジティブ・コントロール	WB: HeLa HEK293 and NIH3T3 whole cell lysate IP: HeLa cell lysate
特記事項	<p>The Life Science industry has been in the grips of a reproducibility crisis for a number of years. Abcam is leading the way in addressing this with our range of recombinant monoclonal antibodies and knockout edited cell lines for gold-standard validation. Please check that this product meets your needs before purchasing.</p> <p>If you have any questions, special requirements or concerns, please send us an inquiry and/or contact our Support team ahead of purchase. Recommended alternatives for this product can be found below, along with publications, customer reviews and Q&As</p>

製品の特性

製品の状態	Liquid
保存方法	Shipped at 4°C. Upon delivery aliquot and store at -20°C. Avoid freeze / thaw cycles.
バッファー	pH: 7 Preservative: 0.09% Sodium azide Constituent: Tris citrate/phosphate
精製度	Immunogen affinity purified
ポリ/モノ	ポリクローナル
アイソタイプ	IgG

アプリケーション

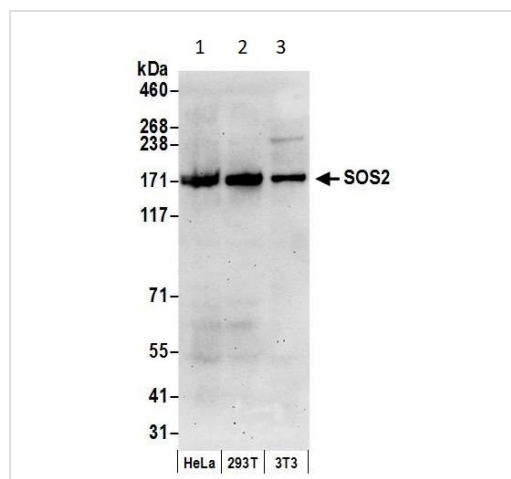
The Abpromise guarantee **Abpromise保証は、** 次のテスト済みアプリケーションにおけるab85831の使用に適用されます
アプリケーションノートには、推奨の開始希釈率がありますが、適切な希釈率につきましてはご検討ください。

アプリケーション	Abreviews	特記事項
WB		1/2000 - 1/10000. Predicted molecular weight: 153 kDa.
IP		Use at 2-5 µg/mg of lysate.

ターゲット情報

機能	Promotes the exchange of Ras-bound GDP by GTP.
配列類似性	Contains 1 DH (DBL-homology) domain. Contains 1 N-terminal Ras-GEF domain. Contains 1 PH domain. Contains 1 Ras-GEF domain.

画像



Western blot - Anti-SOS2 antibody (ab85831)

All lanes : Anti-SOS2 antibody (ab85831) at 0.1 µg/ml

Lane 1 : HeLa cell lysate

Lane 2 : HEK293T cell lysate

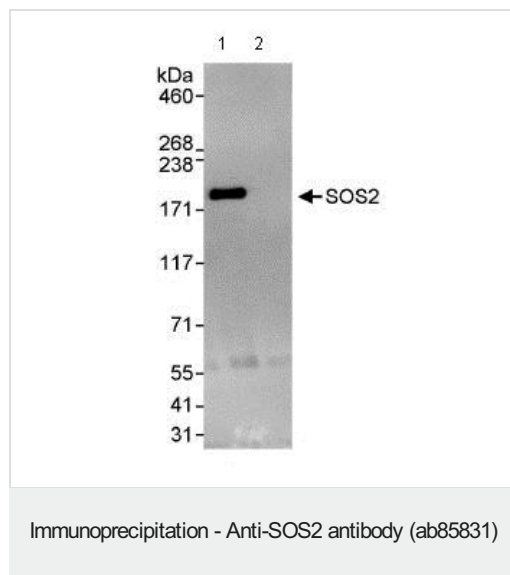
Lane 3 : NIH3T3 cell lysate

Lysates/proteins at 50 µg per lane.

Predicted band size: 153 kDa

Exposure time: 75 seconds

Detection: Chemiluminescence



Immunoprecipitation/ Western Blot of ab85831

Lane 1: ab85831 at 3µg/mg whole cell lysate.

Lane 2: Control IgG.

ab85831 at 1µg/ml for WB.

Whole cell lysate from Hela cells at 1mg for IP, 20% of IP loaded.

Chemiluminescence with an exposure time of 30 seconds.

Please note: All products are "FOR RESEARCH USE ONLY. NOT FOR USE IN DIAGNOSTIC PROCEDURES"

Our Abpromise to you: Quality guaranteed and expert technical support

- Replacement or refund for products not performing as stated on the datasheet
- Valid for 12 months from date of delivery
- Response to your inquiry within 24 hours
- We provide support in Chinese, English, French, German, Japanese and Spanish
- Extensive multi-media technical resources to help you
- We investigate all quality concerns to ensure our products perform to the highest standards

If the product does not perform as described on this datasheet, we will offer a refund or replacement. For full details of the Abpromise, please visit <https://www.abcam.co.jp/abpromise> or contact our technical team.

Terms and conditions

- Guarantee only valid for products bought direct from Abcam or one of our authorized distributors