

Anti-SorLA/SORL1 antibody ab22814

画像数 2

製品の概要

製品名	Anti-SorLA/SORL1 antibody
製品の詳細	Goat polyclonal to SorLA/SORL1
由来種	Goat
アプリケーション	適用あり: ICC/IF
種交差性	交差種: Human 交差が予測される動物種: Rat, Rabbit, Cow, Dog 
免疫原	Synthetic peptide corresponding to Human SorLA/SORL1 aa 2203-2214 (C terminal). Sequence: TGFSDDVPMVIA <div>  Run BLAST with  Run BLAST with </div>
ポジティブ・コントロール	Mouse brain lysate
特記事項	<p>The Life Science industry has been in the grips of a reproducibility crisis for a number of years. Abcam is leading the way in addressing this with our range of recombinant monoclonal antibodies and knockout edited cell lines for gold-standard validation. Please check that this product meets your needs before purchasing.</p> <p>If you have any questions, special requirements or concerns, please send us an inquiry and/or contact our Support team ahead of purchase. Recommended alternatives for this product can be found below, along with publications, customer reviews and Q&As</p>

製品の特性

製品の状態	Liquid
保存方法	Shipped at 4°C. Upon delivery aliquot and store at -20°C. Avoid freeze / thaw cycles.
バッファー	pH: 7.30 Preservative: 0.02% Sodium azide Constituents: Tris buffered saline, 0.5% BSA
精製度	Immunogen affinity purified
特記事項 (精製)	ab22814 is purified by ammonium sulphate precipitation followed by antigen affinity chromatography using the immunizing peptide.
ポリ/モノ	ポリクローナル

アプリケーション

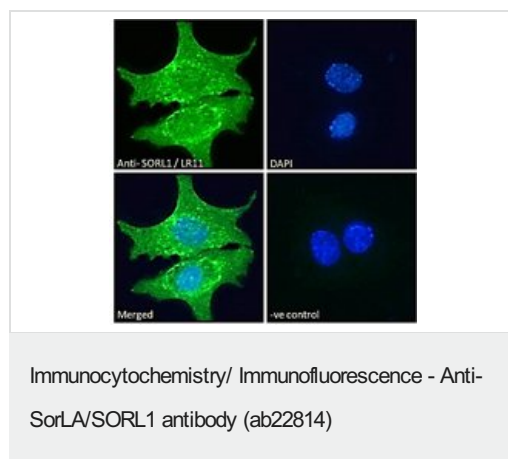
The Abpromise guarantee Abpromise保証は、 次のテスト済みアプリケーションにおけるab22814の使用に適用されます
アプリケーションノートには、推奨の開始希釈率がありますが、適切な希釈率につきましてはご検討ください。

アプリケーション	Abreviews	特記事項
ICC/IF		Use a concentration of 10 µg/ml.

ターゲット情報

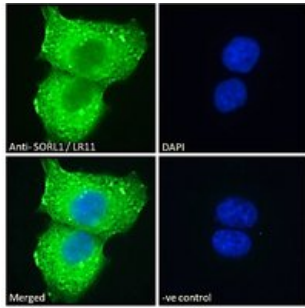
機能	Likely to be a multifunctional endocytic receptor, that may be implicated in the uptake of lipoproteins and of proteases. Binds LDL, the major cholesterol-carrying lipoprotein of plasma, and transports it into cells by endocytosis. Binds the receptor-associated protein (RAP). Could play a role in cell-cell interaction.
組織特異性	Expressed mainly in brain, where it is most abundant in the cerebellum, cerebral cortex and the occipital pole; low expression in the putamen and the thalamus. According to PubMed:9157966, found in spinal cord, testis, liver, kidney and pancreas with detectable levels in placenta, lung and heart. According to PubMed:8940146, expressed in the prostate, ovary, thyroid and spleen, but not found in kidney, liver, lung, skeletal muscle, bone marrow and adrenals.
配列類似性	Belongs to the SORL1 family. Contains 5 BNR repeats. Contains 1 EGF-like domain. Contains 6 fibronectin type-III domains. Contains 11 LDL-receptor class A domains. Contains 5 LDL-receptor class B repeats.
翻訳後修飾	The propeptide removed in the N-terminus may be cleaved by furin or homologous proteases.
細胞内局在	Membrane.

画像



Immunocytochemistry/ Immunofluorescence of HepG2 staining SorLA/SORL1 using ab22814 at 10 µg/ml followed by Alexa Fluor 488 secondary antibody 2 µg/ml

The nuclear stain is DAPI (blue). Negative control: Unimmunized goat IgG (10 µg/ml) followed by Alexa Fluor 488 secondary antibody (2 µg/ml).



Immunocytochemistry/ Immunofluorescence - Anti-SorLA/SORL1 antibody (ab22814)

Immunocytochemistry/ Immunofluorescence of A431 staining SorLA/SORL1 using ab22814 at 10 µg/ml followed by Alexa Fluor 488 secondary antibody 2 µg/ml

The nuclear stain is DAPI (blue). Negative control: Unimmunized goat IgG (10 µg/ml) followed by Alexa Fluor 488 secondary antibody (2 µg/ml).

Please note: All products are "FOR RESEARCH USE ONLY. NOT FOR USE IN DIAGNOSTIC PROCEDURES"

Our Abpromise to you: Quality guaranteed and expert technical support

- Replacement or refund for products not performing as stated on the datasheet
- Valid for 12 months from date of delivery
- Response to your inquiry within 24 hours
- We provide support in Chinese, English, French, German, Japanese and Spanish
- Extensive multi-media technical resources to help you
- We investigate all quality concerns to ensure our products perform to the highest standards

If the product does not perform as described on this datasheet, we will offer a refund or replacement. For full details of the Abpromise, please visit <https://www.abcam.co.jp/abpromise> or contact our technical team.

Terms and conditions

- Guarantee only valid for products bought direct from Abcam or one of our authorized distributors