

Anti-Somatostatin Receptor 2 antibody [UMB1] - C-terminal ab134152

リコンビナント **RabMAb**

111 References 画像数 10

製品の概要

製品名	Anti-Somatostatin Receptor 2 antibody [UMB1] - C-terminal
製品の詳細	Rabbit monoclonal [UMB1] to Somatostatin Receptor 2 - C-terminal
由来種	Rabbit
特異性	The specificity of this antibody was demonstrated in a Somatostatin Receptor 2-deficient mouse model. Refer to Fischer et al.
アプリケーション	適用あり: WB, IHC-P 適用なし: Flow Cyt, ICC/IF or IHC-Fr
種交差性	交差種: Mouse, Rat, Human
免疫原	Synthetic peptide. This information is proprietary to Abcam and/or its suppliers. (Peptide available as ab171899)
ポジティブ・コントロール	WB: Human and mouse brain tissue lysate. U937, INS-1 and Somatostatin Receptor 2 transfected HEK-293 cell lysates. IHC-P: Human pancreas, brain and breast carcinoma tissues.
特記事項	This product is a recombinant monoclonal antibody, which offers several advantages including: <ul style="list-style-type: none"> - High batch-to-batch consistency and reproducibility - Improved sensitivity and specificity - Long-term security of supply - Animal-free production For more information see here . Our RabMAb [®] technology is a patented hybridoma-based technology for making rabbit monoclonal antibodies. For details on our patents, please refer to RabMAb[®] patents .

製品の特性

製品の状態	Liquid
保存方法	Shipped at 4°C. Upon delivery aliquot and store at -20°C. Avoid repeated freeze / thaw cycles.
バッファー	pH: 7.20 Preservative: 0.01% Sodium azide Constituents: 59.49% PBS, 40% Glycerol (glycerin, glycerine), 0.5% BSA

精製度	Protein A purified
ポリ/モノ	モノクローナル
クローン名	UMB1
アイソタイプ	IgG

アプリケーション

The Abpromise guarantee Abpromise保証は、次のテスト済みアプリケーションにおけるab134152の使用に適用されます
アプリケーションノートには、推奨の開始希釈率がありますが、適切な希釈率につきましてはご確認ください。

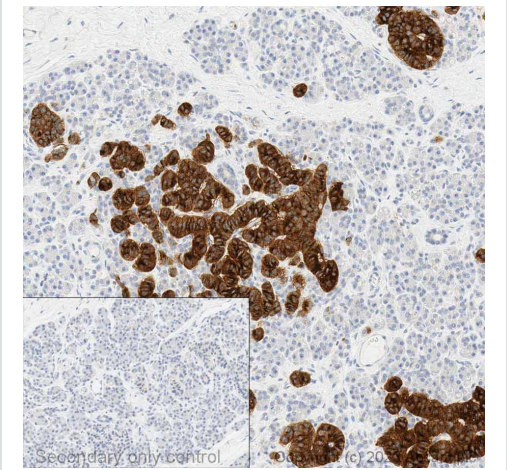
アプリケーション	Abreviews	特記事項
WB		1/1000 - 1/10000. Detects a band of approximately 75-80 kDa (predicted molecular weight: 41 kDa).Can be blocked with <u>Somatostatin Receptor 2 peptide (ab171899)</u> . This antibody works better in 1% SDS Hot Lysates in WB. For Lysate preparation protocol, please refer to the protocol book in the protocol section and/or <u>here (downloadable copy)</u>.
IHC-P		1/100 - 1/2000. Perform heat mediated antigen retrieval with citrate buffer pH 6 before commencing with IHC staining protocol.

追加情報 Is unsuitable for Flow Cyt, ICC/IF or IHC-Fr.

ターゲット情報

機能	Receptor for somatostatins-14 and -28. This receptor is coupled via pertussis toxin sensitive G proteins to inhibition of adenylyl cyclase. In addition it stimulates phosphotyrosine phosphatase and PLC via pertussis toxin insensitive as well as sensitive G proteins. In RIN-5F cells, this receptor inhibits calcium entry by suppressing voltage dependent calcium-channels.
組織特異性	Cerebrum and kidney. In lesser amounts in jejunum, colon and liver.
配列類似性	Belongs to the G-protein coupled receptor 1 family.
細胞内局在	Cell membrane.

画像



Immunohistochemical analysis of formalin-fixed paraffin-embedded human pancreas labelling somatostatin receptor 2 with ab134152 at a concentration of 0.2µg/ml. The immunostaining was performed on a Ventana DISCOVERY ULTRA (Roche Tissue Diagnostics) instrument with an OptiView DAB IHC Detection Kit. Heat mediated antigen retrieval was conducted for 32min with ULTRA cell conditioning solution (CC1 pH8.5). ab134152 anti somatostatin receptor 2 antibody was incubated at 37°C for 16min. Sections were counterstained is with Hematoxylin II. Image inset shows absence of staining in secondary antibody only control.

Immunohistochemistry (Formalin/PFA-fixed paraffin-embedded sections) - Anti-Somatostatin Receptor 2 antibody [UMB1] - C-terminal (ab134152)

Tissue Microarrays (TMA) data for ab134152

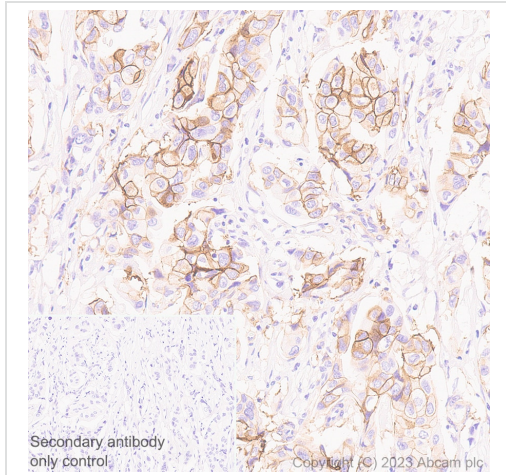
Normal tissue samples			Malignant tissue samples		
Human cardiac muscle	x	Human placenta	x (immune cells v)	Clear cell carcinoma of human kidney	x (endothelial cells v)
Human cerebrum	✓	Human skeletal muscle	x	Human bladder cancer	x (endothelial cells v)
Human colon	✓	Human skin	x	Human breast carcinoma	✓
Human endometrium	x	Human spleen	✓	Human cervical carcinoma	x (endothelial cells v)
Human kidney	✓	Human stomach	✓	Human colon carcinoma	x (endothelial cells v)
Human liver	x	Human testis	x	Human endometrial carcinoma	x (endothelial cells v)
Human lung	x	Human thyroid	x	Human gastric adenocarcinoma	x
Human mammary gland	x	Human tonsil	✓	Human glioma	✓
Human pancreas	x (pancreatic islets v)			Human hepatocellular carcinoma	✓
				Human lung carcinoma	x (immune cells v)
				Human ovarian carcinoma	x
				Human pancreatic carcinoma	x (immune cells v)
				Human prostatic hyperplasia	x (endothelial cells v)
				Human thyroid carcinoma	x (endothelial cells v)

Immunohistochemistry (Formalin/PFA-fixed paraffin-embedded sections) - Anti-Somatostatin Receptor 2 antibody [UMB1] - C-terminal (ab134152)

Tissue Microarrays stained for Anti-Somatostatin Receptor 2 antibody [UMB1] using ab134152 in immunohistochemical analysis. This table provides a detailed overview of positive (tick mark) and negative (cross mark) staining per sample type tested. The sections were incubated with ab134152 for 30 mins at room temperature used at 1:2000 dilution (0.928 µg/ml) followed by a ready to use LeicaDS9800 (Bond™ Polymer Refine Detection) secondary antibody. Counterstain was Hematoxylin.

Heat mediated antigen retrieval was performed with Tris-EDTA buffer (pH 9.0, Epitope Retrieval Solution2) for 20 mins.

The immunostaining was performed on a Leica Biosystems BOND® RX instrument.



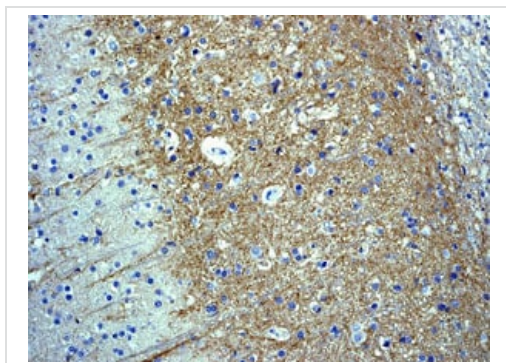
Immunohistochemistry (Formalin/PFA-fixed paraffin-embedded sections) - Anti-Somatostatin Receptor 2 antibody [UMB1] - C-terminal (ab134152)

Immunohistochemical analysis of paraffin-embedded human breast carcinoma tissue labelling Somatostatin Receptor 2 with ab134152 at 1/2000 dilution (0.928 µg/ml) followed by a LeicaDS9800 (Bond™ Polymer Refine Detection) at a ready to use dilution. Positive staining on human breast carcinoma. The section was incubated with ab134152 for 30 mins at room temperature.

The immunostaining was performed on a Leica Biosystems BOND® RX instrument Counterstained with Hematoxylin.

Secondary antibody only control: Secondary antibody is LeicaDS9800 (Bond™ Polymer Refine Detection) at a ready to use dilution.

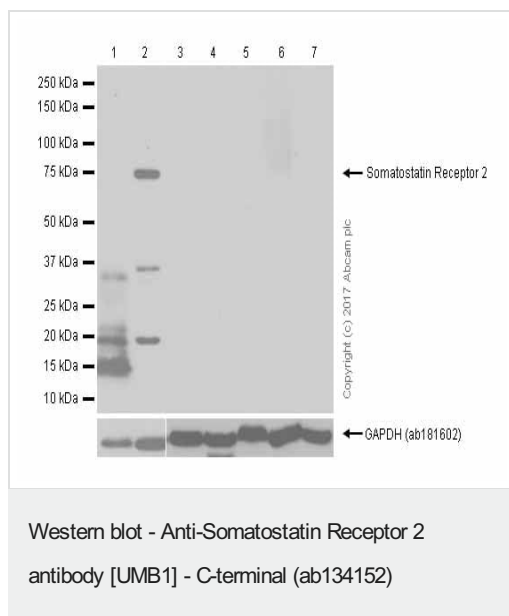
Heat mediated antigen retrieval was performed with Tris-EDTA buffer (pH 9.0, Epitope Retrieval Solution2) for 20 mins.



Immunohistochemistry (Formalin/PFA-fixed paraffin-embedded sections) - Anti-Somatostatin Receptor 2 antibody [UMB1] - C-terminal (ab134152)

Immunohistochemical analysis of paraffin embedded human brain tissue labeled with ab134152 at 1/100 dilution.

Perform heat mediated antigen retrieval with citrate buffer pH 6 before commencing with IHC staining protocol.



All lanes : Anti-Somatostatin Receptor 2 antibody [UMB1] - C-terminal (ab134152) at 1/1000 dilution

Lane 1 : U937 (Human histiocytic lymphoma monocyte) whole cell lysates prepared in RIPA lysis method

Lane 2 : U937 (Human histiocytic lymphoma monocyte) whole cell lysates prepared in 1% SDS hot lysis method

Lane 3 : MCF-7 (Human breast adenocarcinoma epithelial cell) whole cell lysates prepared in RIPA lysis method

Lane 4 : MCF-7 (Human breast adenocarcinoma epithelial cell) whole cell lysates prepared in 1% SDS hot lysis method

Lane 5 : MDA-MB-231 (Human breast adenocarcinoma epithelial cell) whole cell lysates prepared in RIPA lysis method

Lane 6 : MDA-MB-231 (Human breast adenocarcinoma epithelial cell) whole cell lysates prepared in 1% SDS hot lysis method

Lane 7 : A549 (Human lung carcinoma epithelial cell) whole cell lysates prepared in RIPA lysis method

Lysates/proteins at 15 µg per lane.

Secondary

All lanes : Goat Anti-Rabbit IgG H&L (HRP) ([ab97051](#)) at 1/20000 dilution

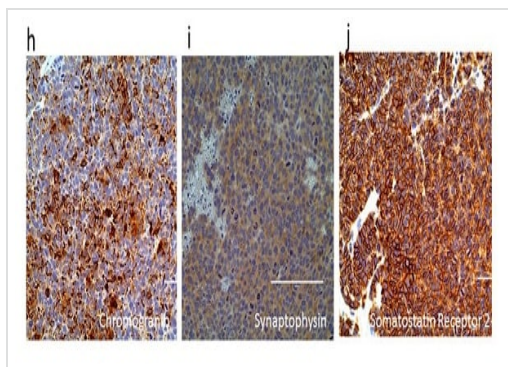
Predicted band size: 41 kDa

Observed band size: 73 kDa

Exposure time: 3 minutes

Blocking and diluting buffer: 5% NFDm/TBST.

This antibody doesn't work in MCF-7 and MDA-MB-231 cells which should be positive (PMID: 16519802). A549 cell is Somatostatin Receptor 2 negative cell line (PMID: 19148511).



Immunohistochemistry (Formalin/PFA-fixed paraffin-embedded sections) - Anti-Somatostatin Receptor 2 antibody [UMB1] - C-terminal (ab134152)

Yuan et al Sci Rep. 2017; 7: 45617. Published online 2017 Apr 5. doi: 10.1038/srep45617

Immunohistochemical analysis of paraffin-embedded human cervical cancer xenograft tissue (cells derived from liver metastases) using ab134152 at 1/100 dilution.

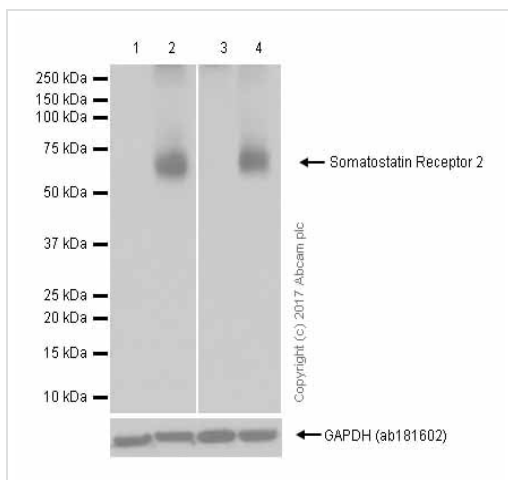
Somatostatin Receptor 2 is detected using ab134152.

From Figure 1 of Yuan et al.

Yuan et al **Sci Rep.** 2017; 7: 45617. Published online 2017 Apr 5. doi: [10.1038/srep45617](https://doi.org/10.1038/srep45617)

Reproduced under the Creative Commons

Licence <http://creativecommons.org/licenses/by/4.0/>



Western blot - Anti-Somatostatin Receptor 2 antibody [UMB1] - C-terminal (ab134152)

All lanes : Anti-Somatostatin Receptor 2 antibody [UMB1] - C-terminal (ab134152) at 1/1000 dilution

Lane 1 : Human brain lysates prepared in RIPA lysis method

Lane 2 : Human brain lysates prepared in 1% SDS hot lysis method

Lane 3 : Mouse brain lysates prepared in RIPA lysis method

Lane 4 : Mouse brain lysates prepared in 1% SDS hot lysis method

Lysates/proteins at 15 µg per lane.

Secondary

All lanes : Goat Anti-Rabbit IgG H&L (HRP) ([ab97051](https://www.abcam.com/products/secondary-antibodies/goat-anti-rabbit-igg-h-l-hrp)) at 1/20000 dilution

Predicted band size: 41 kDa

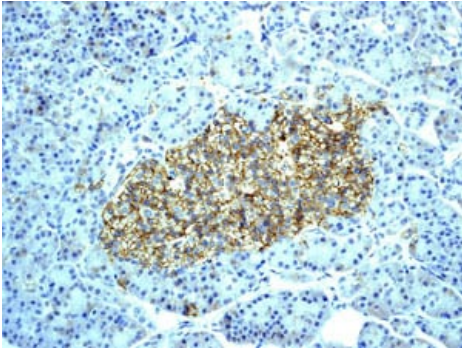
Observed band size: 73 kDa

Blocking and diluting buffer: 5% NFDM/TBST.

Exposure time:

Lane 1 and 2: 1 second.

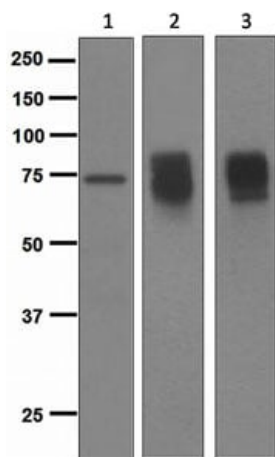
Lane 3 and 4: 5 seconds.



Immunohistochemistry (Formalin/PFA-fixed paraffin-embedded sections) - Anti-Somatostatin Receptor 2 antibody [UMB1] - C-terminal (ab134152)

Immunohistochemical analysis of paraffin embedded human pancreas tissue labeled with ab134152 at 1/100 dilution.

Perform heat mediated antigen retrieval with citrate buffer pH 6 before commencing with IHC staining protocol.



Western blot - Anti-Somatostatin Receptor 2 antibody [UMB1] - C-terminal (ab134152)

All lanes : Anti-Somatostatin Receptor 2 antibody [UMB1] - C-terminal (ab134152) at 1/1000 dilution

Lane 1 : U937 (Human histiocytic lymphoma cell line) cell lysates

Lane 2 : INS-1 cell lysates

Lane 3 : Somatostatin Receptor 2 transfected HEK-293 (Human epithelial cell line from embryonic kidney) cell lysates

Lysates/proteins at 10 µg per lane.

Secondary

All lanes : HRP labeled goat anti-rabbit at 1/2000 dilution

Predicted band size: 41 kDa

Why choose a recombinant antibody?



Research with confidence
Consistent and reproducible results



Long-term and scalable supply
Recombinant technology



Success from the first experiment
Confirmed specificity



Ethical standards compliant
Animal-free production

Anti-Somatostatin Receptor 2 antibody [UMB1] - C-terminal (ab134152)

Please note: All products are "FOR RESEARCH USE ONLY. NOT FOR USE IN DIAGNOSTIC PROCEDURES"

Our Abpromise to you: Quality guaranteed and expert technical support

- Replacement or refund for products not performing as stated on the datasheet
- Valid for 12 months from date of delivery
- Response to your inquiry within 24 hours
- We provide support in Chinese, English, French, German, Japanese and Spanish
- Extensive multi-media technical resources to help you
- We investigate all quality concerns to ensure our products perform to the highest standards

If the product does not perform as described on this datasheet, we will offer a refund or replacement. For full details of the Abpromise, please visit <https://www.abcam.co.jp/abpromise> or contact our technical team.

Terms and conditions

- Guarantee only valid for products bought direct from Abcam or one of our authorized distributors