

Anti-Sodium Potassium ATPase antibody - Plasma Membrane Marker ab58475

★★★★★ [1 Abreviews](#) [24 References](#) [画像数 2](#)

製品の概要

製品名	Anti-Sodium Potassium ATPase antibody - Plasma Membrane Marker
製品の詳細	Rabbit polyclonal to Sodium Potassium ATPase - Plasma Membrane Marker
由来種	Rabbit
アプリケーション	適用あり: IHC-P, WB
種交差性	交差種: Human
免疫原	Synthetic non-phosphopeptide derived from human Sodium Potassium ATPase around the phosphorylation site of serine 16 (A-V-S ^P -E-H).
特記事項	<p>The Life Science industry has been in the grips of a reproducibility crisis for a number of years. Abcam is leading the way in addressing this with our range of recombinant monoclonal antibodies and knockout edited cell lines for gold-standard validation. Please check that this product meets your needs before purchasing.</p> <p>If you have any questions, special requirements or concerns, please send us an inquiry and/or contact our Support team ahead of purchase. Recommended alternatives for this product can be found below, along with publications, customer reviews and Q&As</p>

製品の特性

製品の状態	Liquid
保存方法	Shipped at 4°C. Store at +4°C short term (1-2 weeks). Upon delivery aliquot. Store at -20°C. Stable for 12 months at -20°C.
バッファー	<p>pH: 7.40</p> <p>Preservative: 0.02% Sodium azide</p> <p>Constituents: PBS, 50% Glycerol, 0.87% Sodium chloride</p> <p>Without Mg+2 and Ca+2</p>
精製度	Immunogen affinity purified
ポリ/モノ	ポリクローナル
アイソタイプ	IgG

アプリケーション

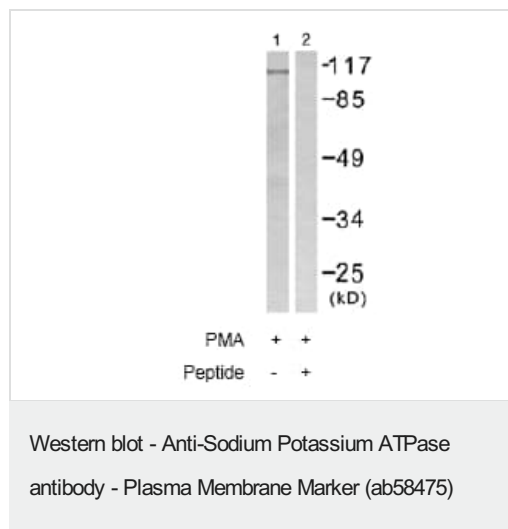
The Abpromise guarantee Abpromise保証は、 次のテスト済みアプリケーションにおけるab58475の使用に適用されます
アプリケーションノートには、推奨の開始希釈率がありますが、適切な希釈率につきましてはご確認ください。

アプリケーション	Abreviews	特記事項
IHC-P		1/50 - 1/100.
WB		1/500 - 1/1000. Detects a band of approximately 113 kDa (predicted molecular weight: 113 kDa).

ターゲット情報

機能	This is the catalytic component of the active enzyme, which catalyzes the hydrolysis of ATP coupled with the exchange of sodium and potassium ions across the plasma membrane. This action creates the electrochemical gradient of sodium and potassium ions, providing the energy for active transport of various nutrients.
配列類似性	Belongs to the cation transport ATPase (P-type) (TC 3.A.3) family. Type IIC subfamily.
翻訳後修飾	Phosphorylation on Tyr-10 modulates pumping activity.
細胞内局在	Cell membrane. Melanosome. Identified by mass spectrometry in melanosome fractions from stage I to stage IV.

画像



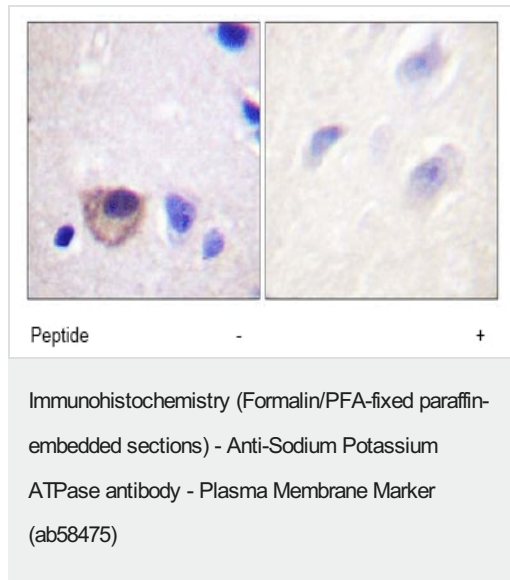
All lanes : Anti-Sodium Potassium ATPase antibody - Plasma Membrane Marker (ab58475) at 1/500 dilution

Lane 1 : 293 cell extracts treated with PMA (125ng/ml, 30mins)

Lane 2 : 293 cell extracts treated with PMA (125ng/ml, 30mins) with immunising peptide

Predicted band size: 113 kDa

Observed band size: 113 kDa



ab58475 at 1/50 dilution staining Sodium Potassium ATPase in human brain by Immunohistochemistry, Paraffin embedded tissue, in the absence or presence of the immunising peptide.

Please note: All products are "FOR RESEARCH USE ONLY. NOT FOR USE IN DIAGNOSTIC PROCEDURES"

Our Abpromise to you: Quality guaranteed and expert technical support

- Replacement or refund for products not performing as stated on the datasheet
- Valid for 12 months from date of delivery
- Response to your inquiry within 24 hours
- We provide support in Chinese, English, French, German, Japanese and Spanish
- Extensive multi-media technical resources to help you
- We investigate all quality concerns to ensure our products perform to the highest standards

If the product does not perform as described on this datasheet, we will offer a refund or replacement. For full details of the Abpromise, please visit <https://www.abcam.co.jp/abpromise> or contact our technical team.

Terms and conditions

- Guarantee only valid for products bought direct from Abcam or one of our authorized distributors