

Anti-SOD2/MnSOD antibody ab13533

★★★★★ [30 Abreviews](#) [301 References](#) [画像数 3](#)

製品の概要

| | |
|--------------|---|
| 製品名 | Anti-SOD2/MnSOD antibody |
| 製品の詳細 | Rabbit polyclonal to SOD2/MnSOD |
| 由来種 | Rabbit |
| アプリケーション | 適用あり: WB |
| 種交差性 | 交差種: Mouse, Rat 交差が予測される動物種: Human  |
| 免疫原 | Recombinant fragment corresponding to Human SOD2/MnSOD. Database link: P04179 |
| ポジティブ・コントロール | WB: Mouse Brain ; Rat Brain ; Rat Brain Membrane; Mouse Liver ; Mouse Hepatocytes |
| 特記事項 | <p>The Life Science industry has been in the grips of a reproducibility crisis for a number of years. Abcam is leading the way in addressing this with our range of recombinant monoclonal antibodies and knockout edited cell lines for gold-standard validation. Please check that this product meets your needs before purchasing.</p> <p>If you have any questions, special requirements or concerns, please send us an inquiry and/or contact our Support team ahead of purchase. Recommended alternatives for this product can be found below, along with publications, customer reviews and Q&As</p> |

製品の特性

| | |
|----------|---|
| 製品の状態 | Liquid |
| 保存方法 | Shipped at 4°C. Upon delivery aliquot and store at -20°C. Avoid freeze / thaw cycles. |
| バッファー | Preservative: 0.1% Sodium azide Constituents: PBS, 50% Glycerol |
| 精製度 | Immunogen affinity purified |
| 特記事項(精製) | This antibody was immunoaffinity purified. |
| ポリ/モノ | ポリクローナル |
| アイソタイプ | IgG |

アプリケーション

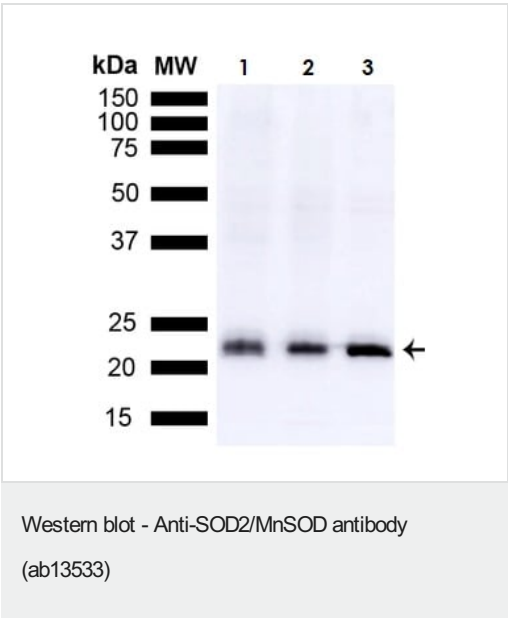
The Abpromise guarantee **Abpromise保証は、次のテスト済みアプリケーションにおけるab13533の使用に適用されます**
アプリケーションノートには、推奨の開始希釈率がありますが、適切な希釈率につきましてはご検討ください。

| アプリケーション | Abreviews | 特記事項 |
|----------|------------|--|
| WB | ★★★★★ (22) | 1/5000. Detects a band of approximately 25 kDa (predicted molecular weight: 26.6 kDa). |

ターゲット情報

| | |
|-------|---|
| 機能 | Destroys superoxide anion radicals which are normally produced within the cells and which are toxic to biological systems. |
| 関連疾患 | Genetic variation in SOD2 is associated with susceptibility to microvascular complications of diabetes type 6 (MVCD6) [MIM:612634]. These are pathological conditions that develop in numerous tissues and organs as a consequence of diabetes mellitus. They include diabetic retinopathy, diabetic nephropathy leading to end-stage renal disease, and diabetic neuropathy. Diabetic retinopathy remains the major cause of new-onset blindness among diabetic adults. It is characterized by vascular permeability and increased tissue ischemia and angiogenesis. |
| 配列類似性 | Belongs to the iron/manganese superoxide dismutase family. |
| 翻訳後修飾 | Nitrated under oxidative stress. Nitration coupled with oxidation inhibits the catalytic activity. |
| 細胞内局在 | Mitochondrion matrix. |

画像



All lanes : Anti-SOD2/MnSOD antibody (ab13533) at 1/1000 dilution (o/n at 4degC)

Lane 1 : Mouse brain

Lane 2 : Rat brain

Lane 3 : Rat brain membrane

Lysates/proteins at 15 µg per lane.

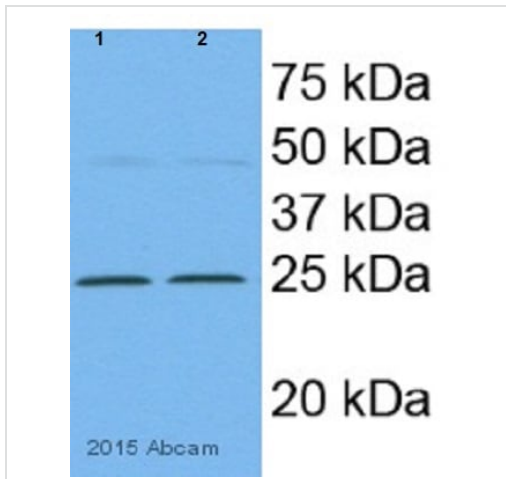
Secondary

All lanes : Goat anti-rabbit IgG HRP for 1 hr at RT with shaking at 1/5000 dilution

Predicted band size: 26.6 kDa

Block: 5% Skim Milk powder in TBST.

Color Development: Chemiluminescent for HRP for 5 min at RT.



Western blot - Anti-SOD2/MnSOD antibody
(ab13533)

Image courtesy of anonymous abreviewer

All lanes : Anti-SOD2/MnSOD antibody (ab13533) at 1/5000 dilution

Lane 1 : mouse liver whole cell lysate

Lane 2 : mouse hepatocytes whole cell lysate

Secondary

All lanes : Goat anti-rabbit HRP conjugate at 1/20000 dilution

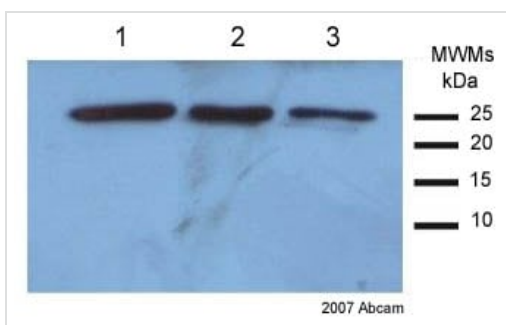
Developed using the ECL technique.

Performed under reducing conditions.

Predicted band size: 26.6 kDa

Observed band size: 24 kDa

Exposure time: 15 seconds



Western blot - Anti-SOD2/MnSOD antibody
(ab13533)

This image is courtesy of an Abreview submitted by Dr
sandra sobocanec

All lanes : Anti-SOD2/MnSOD antibody (ab13533) at 1/5000 dilution

Lane 1 : 2ug mouse liver homogenate supernatant

Lane 2 : 1ug mouse liver homogenate supernatant

Lane 3 : 0.5ug mouse liver homogenate supernatant

Secondary

All lanes : HRP conjugated donkey anti-rabbit antibody

Performed under reducing conditions.

Predicted band size: 26.6 kDa

Observed band size: 25 kDa

Exposure time: 10 seconds

Please note: All products are "FOR RESEARCH USE ONLY. NOT FOR USE IN DIAGNOSTIC PROCEDURES"

Our Abpromise to you: Quality guaranteed and expert technical support

- Replacement or refund for products not performing as stated on the datasheet
- Valid for 12 months from date of delivery

- Response to your inquiry within 24 hours
- We provide support in Chinese, English, French, German, Japanese and Spanish
- Extensive multi-media technical resources to help you
- We investigate all quality concerns to ensure our products perform to the highest standards

If the product does not perform as described on this datasheet, we will offer a refund or replacement. For full details of the Abpromise, please visit <https://www.abcam.co.jp/abpromise> or contact our technical team.

Terms and conditions

- Guarantee only valid for products bought direct from Abcam or one of our authorized distributors