


Anti-SOD2/MnSOD antibody ab118340

2 References [画像数 3](#)

製品の概要

製品名	Anti-SOD2/MnSOD antibody
製品の詳細	Goat polyclonal to SOD2/MnSOD
由来種	Goat
特異性	ab118340 is expected to recognize both reported isoforms (NP_000627.2; NP_001019637.1). The immunizing peptide represents the acetylation site including K122 according to isoform A.
アプリケーション	適用あり: WB
種交差性	交差種: Mouse, Rat, Human, Pig 交差が予測される動物種: Cow, Dog, Zebrafish 
免疫原	Synthetic peptide corresponding to Human SOD2/MnSOD aa 100-200 (internal sequence) (Cysteine residue). Database link: P04179 Run BLAST with Run BLAST with
特記事項	<p>The Life Science industry has been in the grips of a reproducibility crisis for a number of years. Abcam is leading the way in addressing this with our range of recombinant monoclonal antibodies and knockout edited cell lines for gold-standard validation. Please check that this product meets your needs before purchasing.</p> <p>If you have any questions, special requirements or concerns, please send us an inquiry and/or contact our Support team ahead of purchase. Recommended alternatives for this product can be found below, along with publications, customer reviews and Q&As</p>

製品の特性

製品の状態	Liquid
保存方法	Shipped at 4°C. Upon delivery aliquot and store at -20°C. Avoid repeated freeze / thaw cycles.
バッファー	pH: 7.30 Preservative: 0.02% Sodium azide Constituents: 0.5% BSA, 99% Tris buffered saline
精製度	Immunogen affinity purified
特記事項 (精製)	ab118340 is purified from goat serum by ammonium sulphate precipitation followed by antigen affinity chromatography using the immunizing peptide.
ポリ/モノ	ポリクローナル

アプリケーション

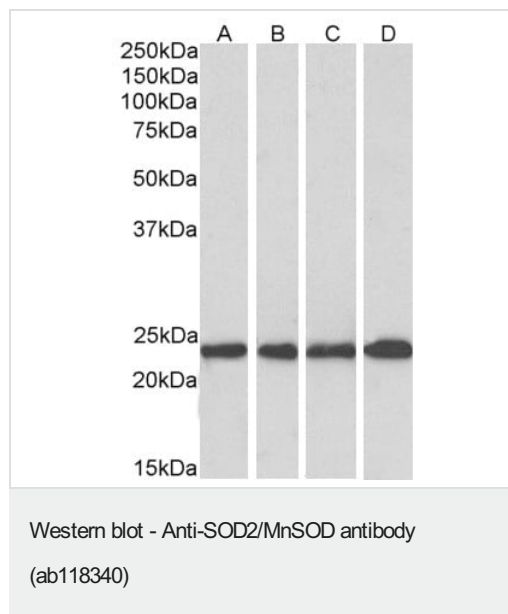
The Abpromise guarantee **Abpromise保証は、次のテスト済みアプリケーションにおけるab118340の使用に適用されます**
アプリケーションノートには、推奨の開始希釈率がありますが、適切な希釈率につきましてはご検討ください。

アプリケーション	Abreviews	特記事項
WB		Use a concentration of 0.01 - 0.1 µg/ml. Detects a band of approximately 24 kDa (predicted molecular weight: 25 kDa). A 1 hour primary incubation is recommended for this product.

ターゲット情報

機能	Destroys superoxide anion radicals which are normally produced within the cells and which are toxic to biological systems.
関連疾患	Genetic variation in SOD2 is associated with susceptibility to microvascular complications of diabetes type 6 (MVCD6) [MIM:612634]. These are pathological conditions that develop in numerous tissues and organs as a consequence of diabetes mellitus. They include diabetic retinopathy, diabetic nephropathy leading to end-stage renal disease, and diabetic neuropathy. Diabetic retinopathy remains the major cause of new-onset blindness among diabetic adults. It is characterized by vascular permeability and increased tissue ischemia and angiogenesis.
配列類似性	Belongs to the iron/manganese superoxide dismutase family.
翻訳後修飾	Nitrated under oxidative stress. Nitration coupled with oxidation inhibits the catalytic activity.
細胞内局在	Mitochondrion matrix.

画像



All lanes : Anti-SOD2/MnSOD antibody (ab118340)

Lane 1 : Human Cerebellum lysate

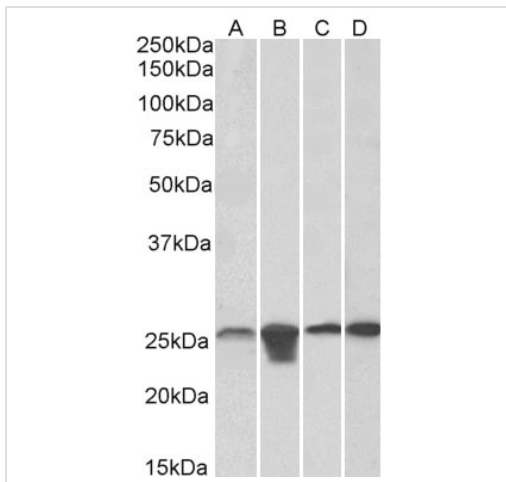
Lane 2 : Mouse Brain lysate

Lane 3 : Rat Brain lysate

Lane 4 : Pig Brain lysate

Lysates/proteins at 35 µg per lane.

Predicted band size: 25 kDa



Western blot - Anti-SOD2/MnSOD antibody
(ab118340)

All lanes : Anti-SOD2/MnSOD antibody (ab118340)

Lane 1 : HeLa cell lysate

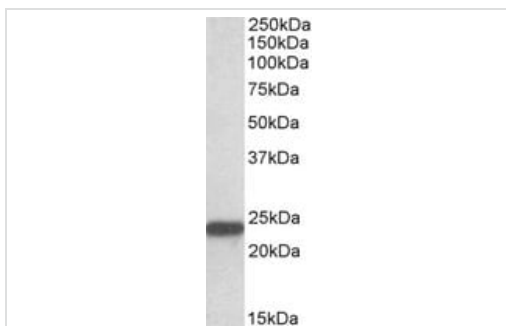
Lane 2 : HepG2

Lane 3 : HEK293

Lane 4 : NIH3T3

Lysates/proteins at 35 µg per lane.

Predicted band size: 25 kDa



Western blot - Anti-SOD2/MnSOD antibody
(ab118340)

Anti-SOD2/MnSOD antibody (ab118340) at 0.1 µg/ml (incubation time: 1 hour) + Mouse Spinal Cord lysate in RIPA buffer at 35 µg

Developed using the ECL technique.

Predicted band size: 25 kDa

Please note: All products are "FOR RESEARCH USE ONLY. NOT FOR USE IN DIAGNOSTIC PROCEDURES"

Our Abpromise to you: Quality guaranteed and expert technical support

- Replacement or refund for products not performing as stated on the datasheet
- Valid for 12 months from date of delivery
- Response to your inquiry within 24 hours
- We provide support in Chinese, English, French, German, Japanese and Spanish
- Extensive multi-media technical resources to help you
- We investigate all quality concerns to ensure our products perform to the highest standards

If the product does not perform as described on this datasheet, we will offer a refund or replacement. For full details of the Abpromise, please visit <https://www.abcam.co.jp/abpromise> or contact our technical team.

Terms and conditions

- Guarantee only valid for products bought direct from Abcam or one of our authorized distributors