


Anti-SNAP25 antibody ab41726

★★★★★ [2 Abreviews](#) [画像数 3](#)

製品の概要

製品名	Anti-SNAP25 antibody
製品の詳細	Rabbit polyclonal to SNAP25
由来種	Rabbit
特異性	From Jan 2024, QC testing of replenishment batches of this polyclonal changed. All tested and expected application and reactive species combinations are still covered by our Abcam product promise. However, we no longer test all applications. For more information on a specific batch, please contact our Scientific Support who will be happy to help.
アプリケーション	適用あり: IP, WB 適用なし: ICC/IF
種交差性	交差種: Mouse, Rat, Human, Zebrafish 交差が予測される動物種: Chicken, Cow, Drosophila melanogaster 
免疫原	Synthetic peptide. This information is proprietary to Abcam and/or its suppliers.
ポジティブ・コントロール	This antibody gave a positive signal in the following lysates: Spinal Cord (Mouse) Tissue Lysate, Spinal Cord (Rat) Tissue lysate, Hippocampus (Mouse) Tissue Lysate.
特記事項	<p>The Life Science industry has been in the grips of a reproducibility crisis for a number of years. Abcam is leading the way in addressing this with our range of recombinant monoclonal antibodies and knockout edited cell lines for gold-standard validation. Please check that this product meets your needs before purchasing.</p> <p>If you have any questions, special requirements or concerns, please send us an inquiry and/or contact our Support team ahead of purchase. Recommended alternatives for this product can be found below, along with publications, customer reviews and Q&As</p>

製品の特性

製品の状態	Liquid
保存方法	Shipped at 4°C. Store at +4°C short term (1-2 weeks). Upon delivery aliquot. Store at -20°C or -80°C. Avoid freeze / thaw cycle.
バッファー	pH: 7.40 Preservative: 0.02% Sodium azide Constituent: PBS

Batches of this product that have a concentration < 1mg/ml may have BSA added as a stabilising agent. If you would like information about the formulation of a specific lot, please contact our scientific support team who will be happy to help.

精製度	Immunogen affinity purified
ポリ/モノ	ポリクローナル
アイソタイプ	IgG

アプリケーション

The Abpromise guarantee **Abpromise保証は、** 次のテスト済みアプリケーションにおけるab41726の使用に適用されます
アプリケーションノートには、推奨の開始希釈率がありますが、適切な希釈率につきましてはご検討ください。

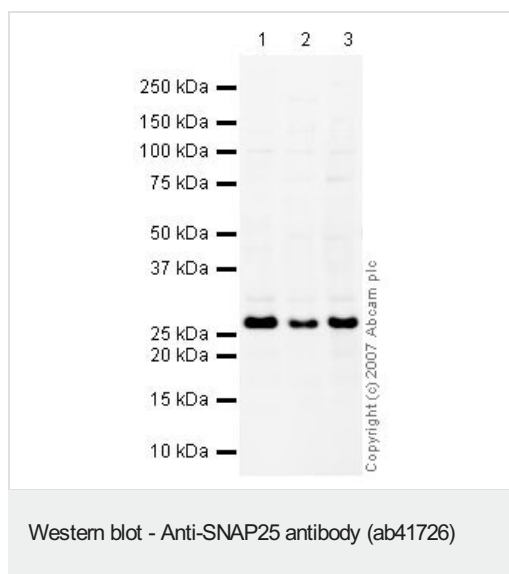
アプリケーション	Abreviews	特記事項
IP		Use a concentration of 5 µg/ml.
WB	★★★★★ (1)	Use a concentration of 1 µg/ml. Detects a band of approximately 26 kDa (predicted molecular weight: 23 kDa).

追加情報 Is unsuitable for ICC/IF.

ターゲット情報

機能	t-SNARE involved in the molecular regulation of neurotransmitter release. May play an important role in the synaptic function of specific neuronal systems. Associates with proteins involved in vesicle docking and membrane fusion. Regulates plasma membrane recycling through its interaction with CENPF.
組織特異性	Neurons of the neocortex, hippocampus, piriform cortex, anterior thalamic nuclei, pontine nuclei, and granule cells of the cerebellum.
配列類似性	Belongs to the SNAP-25 family. Contains 2 t-SNARE coiled-coil homology domains.
翻訳後修飾	Palmitoylated. Cys-85 appears to be the main site, and palmitoylation is required for membrane association.
細胞内局在	Cytoplasm > perinuclear region. Cell membrane. Cell junction > synapse > synaptosome. Membrane association requires palmitoylation. Expressed throughout cytoplasm, concentrating at the perinuclear region.

画像



All lanes : Anti-SNAP25 antibody (ab41726) at 1 µg/ml

Lane 1 : Spinal Cord (Mouse) Tissue Lysate

Lane 2 : Spinal Cord (Rat) Tissue lysate

Lane 3 : Mouse brain tissue lysate - total protein (0 days) (**ab7188**)

Lysates/proteins at 10 µg per lane.

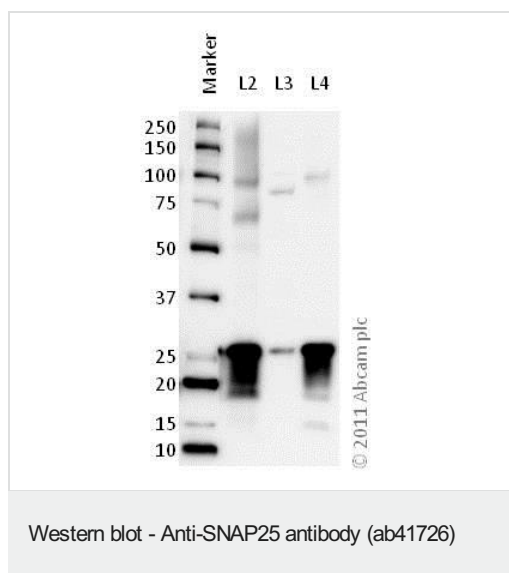
Secondary

All lanes : IRDye 680 Conjugated Goat Anti-Rabbit IgG (H+L) at 1/10000 dilution

Performed under reducing conditions.

Predicted band size: 23 kDa

Observed band size: 26 kDa



All lanes : Anti-SNAP25 antibody (ab41726) at 1 µg/ml

Lane 1 : Marker

Lane 2 : Zebrafish brain homogenate at 20 µg

Lane 3 : SH-SY5Y (Human neuroblastoma cell line) whole cell lysate at 20 µg

Lane 4 : Mouse brain homogenate at 20 µg

Secondary

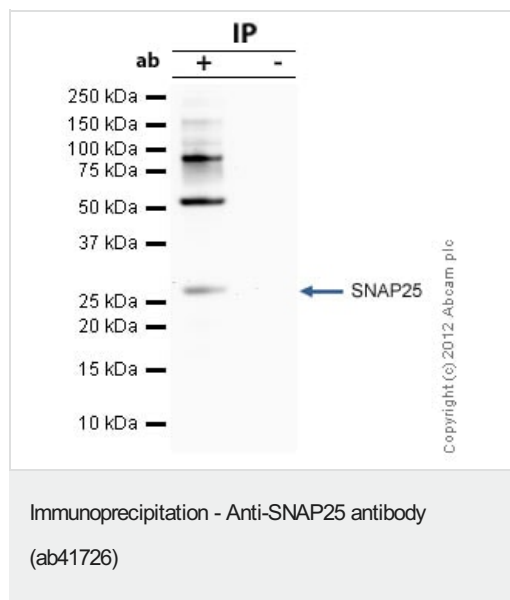
All lanes : Goat polyclonal to Rabbit IgG – H&L – Pre-Adsorbed (HRP) at 1/6000 dilution

Developed using the ECL technique.

Performed under reducing conditions.

Predicted band size: 23 kDa

Observed band size: 26 kDa



SNAP25 was immunoprecipitated using 0.5mg Rat Spinal Cord tissue lysate, 5µg of Rabbit polyclonal to SNAP25 and 50µl of protein G magnetic beads (+). No antibody was added to the control (-).

The antibody was incubated under agitation with Protein G beads for 10min, Rat Spinal Cord tissue lysate lysate diluted in RIPA buffer was added to each sample and incubated for a further 10min under agitation.

Proteins were eluted by addition of 40µl SDS loading buffer and incubated for 10min at 70°C; 10µl of each sample was separated on a SDS PAGE gel, transferred to a nitrocellulose membrane, blocked with 5% BSA and probed with ab41726.

Secondary: Clean-Blot IP Detection Reagent (HRP) at 1/500 dilution.

Band: 26kDa; SNAP25; non specific bands - 55 and 98kDa: We are unsure as to the identity of this extra band.

Please note: All products are "FOR RESEARCH USE ONLY. NOT FOR USE IN DIAGNOSTIC PROCEDURES"

Our Abpromise to you: Quality guaranteed and expert technical support

- Replacement or refund for products not performing as stated on the datasheet
- Valid for 12 months from date of delivery
- Response to your inquiry within 24 hours
- We provide support in Chinese, English, French, German, Japanese and Spanish
- Extensive multi-media technical resources to help you
- We investigate all quality concerns to ensure our products perform to the highest standards

If the product does not perform as described on this datasheet, we will offer a refund or replacement. For full details of the Abpromise, please visit <https://www.abcam.co.jp/abpromise> or contact our technical team.

Terms and conditions

- Guarantee only valid for products bought direct from Abcam or one of our authorized distributors