


### Anti-SNAIL + SLUG antibody ab85936

★★★★★ [2 Abreviews](#) [33 References](#) [画像数 2](#)

#### 製品の概要

製品名	Anti-SNAIL + SLUG antibody
製品の詳細	Rabbit polyclonal to SNAIL + SLUG
由来種	Rabbit
特異性	Replenishment batches of ab85936 are tested in WB. Previous batches were additionally validated in IHC-P. This application is still expected to work and is covered by our Abpromise guarantee.
アプリケーション	<b>適用あり:</b> WB, IHC-P
種交差性	<b>交差種:</b> Human, Recombinant fragment <b>交差が予測される動物種:</b> Rat  <b>非交差種:</b> Mouse
免疫原	Synthetic peptide. This information is proprietary to Abcam and/or its suppliers.
ポジティブ・コントロール	WB: Human SNAIL Full-length Recombinant Protein (Tagged). IHC-P: Human breast ductal carcinoma.
特記事項	<p>Batches sold under ab85936 have passed QC testing in Western Blot (Recombinant only) and IHC. In our hands, this product did not work in ICC/IF. For further information please contact our Customer Services team.</p> <p>The Life Science industry has been in the grips of a reproducibility crisis for a number of years. Abcam is leading the way in addressing this with our range of recombinant monoclonal antibodies and knockout edited cell lines for gold-standard validation. Please check that this product meets your needs before purchasing.</p> <p>If you have any questions, special requirements or concerns, please send us an inquiry and/or contact our Support team ahead of purchase. Recommended alternatives for this product can be found below, along with publications, customer reviews and Q&amp;As</p>

#### 製品の特性

製品の状態	Liquid
保存方法	Shipped at 4°C. Store at +4°C short term (1-2 weeks). Upon delivery aliquot. Store at -20°C or -80°C. Avoid freeze / thaw cycle.
バッファー	<p>pH: 7.40</p> <p>Preservative: 0.02% Sodium azide</p> <p>Constituent: PBS</p>

Batches of this product that have a concentration < 1mg/ml may have BSA added as a stabilising agent. If you would like information about the formulation of a specific lot, please contact our scientific support team who will be happy to help.

精製度	Immunogen affinity purified
ポリ/モノ	ポリクローナル
アイソタイプ	IgG

## アプリケーション

**The Abpromise guarantee**      **Abpromise保証は、次のテスト済みアプリケーションにおけるab85936の使用に適用されます**  
アプリケーションノートには、推奨の開始希釈率がありますが、適切な希釈率につきましてはご検討ください。

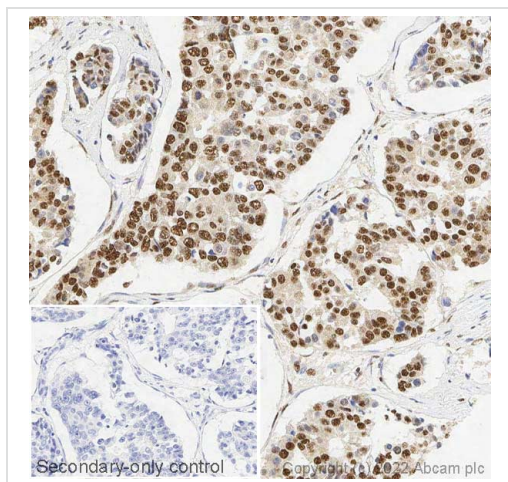
アプリケーション	Abreviews	特記事項
WB		Use a concentration of 1 µg/ml. Predicted molecular weight: 29 kDa. Please note this antibody has only been shown to detect recombinant protein and we are unable to detect endogenous protein by western blot, in our lab. Please contact our scientific support services if you have any queries regarding this antibody.
IHC-P	★★★★★ (2)	Use a concentration of 1 µg/ml. Perform heat mediated antigen retrieval with citrate buffer pH 6 before commencing with IHC staining protocol.

## ターゲット情報

**関連性**      Function: SNAIL is involved in the epithelial to mesenchymal transition (EMT) and formation and maintenance of embryonic mesoderm (By similarity). Binds to 3 E-boxes of the E-cadherin gene promoter and represses its transcription. SLUG is a transcriptional repressor, involved in the generation and migration of neural crest cells. PTM: SNAIL is phosphorylated by GSK3B. Once phosphorylated, it becomes a target for BTRC ubiquitination. Ubiquitinated on Lys-98, Lys-137 and Lys-146 by FBXL14 and BTRC leading to degradation. BTRC-triggered ubiquitination requires previous GSK3B-mediated SNAIL phosphorylation. Similarity: Both SNAIL and SLUG belong to the snail C2H2-type zinc-finger protein family. Tissue specificity: SNAIL is expressed in a variety of tissues with the highest expression in kidney. Expressed in mesenchymal and epithelial cell lines. SLUG is expressed in placenta and adult heart, pancreas, liver, kidney and skeletal muscle.

**細胞内局在**      Slug is generally nuclear, while Snail is known to be both cytoplasmic and nuclear. Once phosphorylated (probably on Ser-107, Ser-111, Ser-115 and Ser-119) snail is exported from the nucleus to the cytoplasm where subsequent phosphorylation of the destruction motif and ubiquitination involving BTRC occurs.

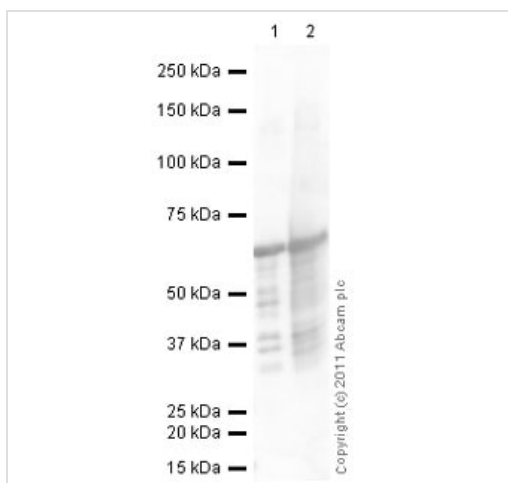
## 画像



Immunohistochemistry (Formalin/PFA-fixed paraffin-embedded sections) - Anti-SNAIL + SLUG antibody (ab85936)

IHC image of SNAIL + SLUG staining in a section of formalin-fixed paraffin-embedded normal human breast carcinoma\* performed on a Leica BOND™ system using the standard protocol F. The section was pre-treated using heat mediated antigen retrieval with sodium citrate buffer (pH6, epitope retrieval solution 1) for 20mins. The section was then incubated with ab85936, 1ug/ml, for 15 mins at room temperature and detected using an HRP conjugated compact polymer system. DAB was used as the chromogen. The section was then counterstained with haematoxylin and mounted with DPX. The inset secondary-only control image is taken from an identical assay without primary antibody.

\*Tissue obtained from the Human Research Tissue Bank, supported by the NIHR Cambridge Biomedical Research Centre  
For other IHC staining systems (automated and non-automated) customers should optimize variable parameters such as antigen retrieval conditions, primary antibody concentration and antibody incubation times.



Western blot - Anti-SNAIL + SLUG antibody (ab85936)

**All lanes :** Anti-SNAIL + SLUG antibody (ab85936) at 1 µg/ml

**Lane 1 :** SLUG (SNAI2) Human - GST Tagged Recombinant Protein

**Lane 2 :** SNAIL (SNAI1) - GST Tagged Recombinant Protein

Lysates/proteins at 0.1 µg per lane.

#### Secondary

**All lanes :** Goat Anti-Rabbit IgG H&L (HRP) preadsorbed ([ab97080](#)) at 1/5000 dilution

Developed using the ECL technique.

Performed under reducing conditions.

**Predicted band size:** 29 kDa

**Observed band size:** 65 kDa

**Exposure time:** 30 seconds

Please note this antibody has only been shown to detect

recombinant protein and we are unable to detect endogenous protein by western blot, in our lab. Please contact our scientific support services if you have any queries regarding this antibody.

**Please note:** All products are "FOR RESEARCH USE ONLY. NOT FOR USE IN DIAGNOSTIC PROCEDURES"

#### **Our Abpromise to you: Quality guaranteed and expert technical support**

---

- Replacement or refund for products not performing as stated on the datasheet
- Valid for 12 months from date of delivery
- Response to your inquiry within 24 hours
  
- We provide support in Chinese, English, French, German, Japanese and Spanish
- Extensive multi-media technical resources to help you
- We investigate all quality concerns to ensure our products perform to the highest standards

If the product does not perform as described on this datasheet, we will offer a refund or replacement. For full details of the Abpromise, please visit <https://www.abcam.co.jp/abpromise> or contact our technical team.

#### **Terms and conditions**

---

- Guarantee only valid for products bought direct from Abcam or one of our authorized distributors