


Anti-SMURF 2 antibody [EP629Y3] ab53316

KO 評価済 リコンビナント RabMAb

★★★★★ [2 Abreviews](#) [15 References](#) [画像数 4](#)

製品の概要

製品名	Anti-SMURF 2 antibody [EP629Y3]
製品の詳細	Rabbit monoclonal [EP629Y3] to SMURF 2
由来種	Rabbit
アプリケーション	適用あり: WB 適用なし: Flow Cyt, ICC/IF, IHC-P or IP
種交差性	交差種: Human 交差が予測される動物種: Mouse, Rat 
免疫原	Synthetic peptide within Human SMURF 2 aa 200-300. The exact sequence is proprietary.
ポジティブ・コントロール	WB: HeLa, U-2 OS and SH-SY-5Y cell lysates.
特記事項	This product is a recombinant monoclonal antibody, which offers several advantages including: <ul style="list-style-type: none"> - High batch-to-batch consistency and reproducibility - Improved sensitivity and specificity - Long-term security of supply - Animal-free production For more information see here . Our RabMAb [®] technology is a patented hybridoma-based technology for making rabbit monoclonal antibodies. For details on our patents, please refer to RabMAb[®] patents .

製品の特性

製品の状態	Liquid
保存方法	Shipped at 4°C. Store at -20°C. Stable for 12 months at -20°C.
バッファー	pH: 7.20 Preservative: 0.01% Sodium azide Constituents: 9% PBS, 40% Glycerol (glycerin, glycerine), 0.05% BSA, 50% Tissue culture supernatant
精製度	Protein A purified
ポリ/モノ	モノクローナル
クローン名	EP629Y3

アプリケーション

The Abpromise guarantee **Abpromise保証は、次のテスト済みアプリケーションにおけるab53316の使用に適用されず**
 アプリケーションノートには、推奨の開始希釈率がありますが、適切な希釈率につきましてはご検討ください。

アプリケーション	Abreviews	特記事項
WB	★★★★★ (2)	1/500 - 1/1000. Detects a band of approximately 86 kDa (predicted molecular weight: 86 kDa).

追加情報

Is unsuitable for Flow Cyt, ICC/IF, IHC-P or IP.

ターゲット情報

機能

E3 ubiquitin-protein ligase which accepts ubiquitin from an E2 ubiquitin-conjugating enzyme in the form of a thioester and then directly transfers the ubiquitin to targeted substrates. Interacts with SMAD1 and SMAD7 in order to trigger their ubiquitination and proteasome-dependent degradation. In addition, interaction with SMAD7 activates autocatalytic degradation, which is prevented by interaction with SCYE1. Forms a stable complex with the TGF-beta receptor-mediated phosphorylated SMAD2 and SMAD3. In this way, SMAD2 may recruit substrates, such as SNON, for ubiquitin-mediated degradation. Enhances the inhibitory activity of SMAD7 and reduces the transcriptional activity of SMAD2. Coexpression of SMURF2 with SMAD1 results in considerable decrease in steady-state level of SMAD1 protein and a smaller decrease of SMAD2 level.

組織特異性

Widely expressed.

パスウェイ

Protein modification; protein ubiquitination.

配列類似性

Contains 1 C2 domain.
 Contains 1 HECT (E6AP-type E3 ubiquitin-protein ligase) domain.
 Contains 3 WW domains.

ドメイン

The second and third WW domains are responsible for interaction with the PY-motif of R-SMAD (SMAD1, SMAD2 and SMAD3).
 The C2 domain is involved in autoinhibition of the catalytic activity by interacting with the HECT domain.

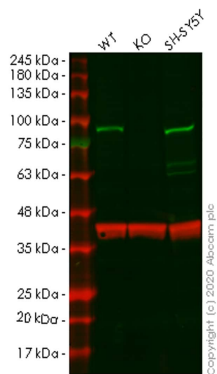
翻訳後修飾

Auto-ubiquitinated and ubiquitinated in the presence of RNF11 and UBE2D1.

細胞内局在

Nucleus. Cytoplasm. Cell membrane. Membrane raft. Cytoplasmic in the presence of SMAD7.
 Co-localizes with CAV1, SMAD7 and TGF-beta receptor in membrane rafts.

画像



Western blot - Anti-SMURF 2 antibody [EP629Y3] (ab53316)

All lanes : Anti-SMURF 2 antibody [EP629Y3] (ab53316) at 1/1000 dilution

Lane 1 : Wild-type HeLa cell lysate

Lane 2 : SMURF2 knockout HeLa cell lysate

Lane 3 : SH-SY5Y cell lysate

Lysates/proteins at 20 µg per lane.

Secondary

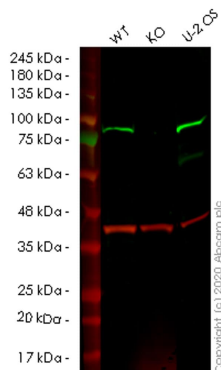
All lanes : Goat anti-Rabbit IgG H&L (IRDye® 800CW) preadsorbed ([ab216773](#)) at 1/10000 dilution

Predicted band size: 86 kDa

Observed band size: 86 kDa

Lanes 1-3: Merged signal (red and green). Green - ab53316 observed at 86 kDa. Red - loading control [ab8245](#) observed at 36 kDa.

ab53316 Anti-SMURF 2 antibody [EP629Y3] was shown to specifically react with SMURF 2 in wild-type HeLa cells. Loss of signal was observed when knockout cell line [ab265231](#) (knockout cell lysate [ab257691](#)) was used. Wild-type and SMURF 2 knockout samples were subjected to SDS-PAGE. ab53316 and Anti-GAPDH antibody [6C5] - Loading Control ([ab8245](#)) were incubated overnight at 4°C at 1 in 1000 dilution and 1 in 20000 dilution respectively. Blots were developed with Goat anti-Rabbit IgG H&L (IRDye® 800CW) preadsorbed ([ab216773](#)) and Goat anti-Mouse IgG H&L (IRDye® 680RD) preadsorbed ([ab216776](#)) secondary antibodies at 1 in 20000 dilution for 1 hour at room temperature before imaging.



Western blot - Anti-SMURF 2 antibody [EP629Y3] (ab53316)

All lanes : Anti-SMURF 2 antibody [EP629Y3] (ab53316) at 1/1000 dilution

Lane 1 : Wild-type HeLa cell lysate

Lane 2 : SMURF2 knockout HeLa cell lysate

Lane 3 : U-2 OS cell lysate

Lysates/proteins at 20 µg per lane.

Secondary

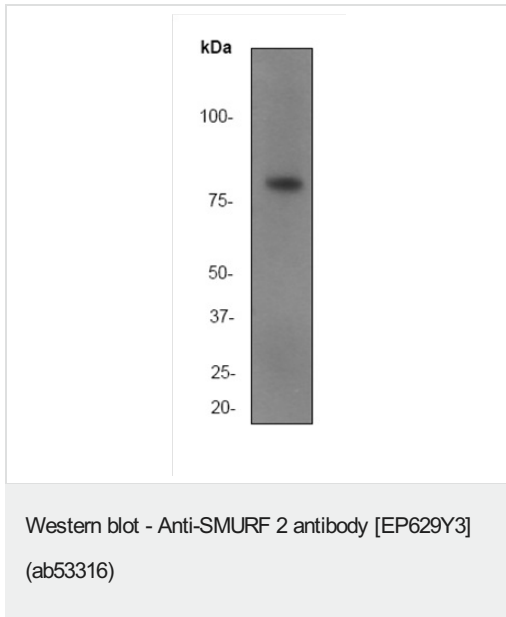
All lanes : Goat anti-Rabbit IgG H&L (IRDye® 800CW) preadsorbed (**ab216773**) at 1/10000 dilution

Predicted band size: 86 kDa

Observed band size: 86 kDa

Lanes 1-3: Merged signal (red and green). Green - ab53316 observed at 86 kDa. Red - loading control **ab8245** observed at 36 kDa.

ab53316 Anti-SMURF 2 antibody [EP629Y3] was shown to specifically react with SMURF 2 in wild-type HeLa cells. Loss of signal was observed when knockout cell line **ab264806** (knockout cell lysate **ab257690**) was used. Wild-type and SMURF 2 knockout samples were subjected to SDS-PAGE. ab53316 and Anti-GAPDH antibody [6C5] - Loading Control (**ab8245**) were incubated at room temperature for 2.5 hours at 1 in 1000 dilution and 1 in 20000 dilution respectively. Blots were developed with Goat anti-Rabbit IgG H&L (IRDye® 800CW) preadsorbed (**ab216773**) and Goat anti-Mouse IgG H&L (IRDye® 680RD) preadsorbed (**ab216776**) secondary antibodies at 1 in 20000 dilution for 1 hour at room temperature before imaging.



Anti-SMURF 2 antibody [EP629Y3] (ab53316) at 1/500 dilution + SH-SY-5Y cell lysate at 10 µg





Secondary

Goat anti-rabbit HRP labeled at 1/2000 dilution

Predicted band size: 86 kDa

Observed band size: 86 kDa

Why choose a recombinant antibody?

 <p>Research with confidence Consistent and reproducible results</p>	 <p>Long-term and scalable supply Recombinant technology</p>
 <p>Success from the first experiment Confirmed specificity</p>	 <p>Ethical standards compliant Animal-free production</p>

Anti-SMURF 2 antibody [EP629Y3] (ab53316)

Please note: All products are "FOR RESEARCH USE ONLY. NOT FOR USE IN DIAGNOSTIC PROCEDURES"

Our Abpromise to you: Quality guaranteed and expert technical support

- Replacement or refund for products not performing as stated on the datasheet
- Valid for 12 months from date of delivery
- Response to your inquiry within 24 hours
- We provide support in Chinese, English, French, German, Japanese and Spanish
- Extensive multi-media technical resources to help you
- We investigate all quality concerns to ensure our products perform to the highest standards

If the product does not perform as described on this datasheet, we will offer a refund or replacement. For full details of the Abpromise, please visit <https://www.abcam.co.jp/abpromise> or contact our technical team.

Terms and conditions

- Guarantee only valid for products bought direct from Abcam or one of our authorized distributors