


### Anti-SMPX antibody ab117753

画像数 2

#### 製品の概要

製品名	Anti-SMPX antibody
製品の詳細	Rabbit polyclonal to SMPX
由来種	Rabbit
アプリケーション	<b>適用あり:</b> WB, IHC-P
種交差性	<b>交差種:</b> Mouse
免疫原	Synthetic peptide: NLSEIQNVKSELKFVPGKE conjugated to KLH, corresponding to C terminal amino acids 66-84 of Mouse SMPX.  <a href="#">Run BLAST with</a>  <a href="#">Run BLAST with</a>
ポジティブ・コントロール	IHC-P: Mouse cardiomyocytes. WB: Mouse heart cell lysate.
特記事項	<p>The Life Science industry has been in the grips of a reproducibility crisis for a number of years. Abcam is leading the way in addressing this with our range of recombinant monoclonal antibodies and knockout edited cell lines for gold-standard validation. Please check that this product meets your needs before purchasing.</p> <p>If you have any questions, special requirements or concerns, please send us an inquiry and/or contact our Support team ahead of purchase. Recommended alternatives for this product can be found below, along with publications, customer reviews and Q&amp;As</p>

#### 製品の特性

製品の状態	Liquid
保存方法	Shipped at 4°C. Upon delivery aliquot and store at -20°C. Avoid freeze / thaw cycles.
バッファー	Preservative: 0.02% Sodium azide Constituent: Whole serum
精製度	Whole antiserum
ポリ/モノ	ポリクローナル
アイソタイプ	IgG

#### アプリケーション

## The Abpromise guarantee

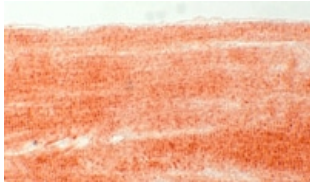
**Abpromise保証は、次のテスト済みアプリケーションにおけるab117753の使用に適用されます**  
アプリケーションノートには、推奨の開始希釈率がありますが、適切な希釈率につきましてはご検討ください。

アプリケーション	Abreviews	特記事項
WB		1/5000. Detects a band of approximately 9 kDa (predicted molecular weight: 9 kDa).
IHC-P		1/2000.

## ターゲット情報

機能	Plays a role in the regulatory network through which muscle cells coordinate their structural and functional states during growth, adaptation, and repair.
組織特異性	Preferentially and abundantly expressed in heart and skeletal muscle.
配列類似性	Belongs to the SMPX family.

## 画像



ab117753 at 1/2000 dilution staining SMPX in Mouse cardiomyocytes by Immunohistochemistry.

Immunohistochemistry (Formalin/PFA-fixed paraffin-embedded sections) - Anti-SMPX antibody (ab117753)

20 -

10 -



Anti-SMPX antibody (ab117753) at 1/5000 dilution + Mouse heart lysate

**Predicted band size:** 9 kDa

**Observed band size:** 9 kDa

Western blot - Anti-SMPX antibody (ab117753)

**Please note:** All products are "FOR RESEARCH USE ONLY. NOT FOR USE IN DIAGNOSTIC PROCEDURES"

### **Our Abpromise to you: Quality guaranteed and expert technical support**

---

- Replacement or refund for products not performing as stated on the datasheet
- Valid for 12 months from date of delivery
- Response to your inquiry within 24 hours
  
- We provide support in Chinese, English, French, German, Japanese and Spanish
- Extensive multi-media technical resources to help you
- We investigate all quality concerns to ensure our products perform to the highest standards

If the product does not perform as described on this datasheet, we will offer a refund or replacement. For full details of the Abpromise, please visit <https://www.abcam.co.jp/abpromise> or contact our technical team.

### **Terms and conditions**

---

- Guarantee only valid for products bought direct from Abcam or one of our authorized distributors