


Anti-smooth muscle Myosin heavy chain 11 antibody ab82541

★★★★☆ **4 Abreviews** **8 References** 画像数 3

製品の概要

製品名	Anti-smooth muscle Myosin heavy chain 11 antibody
製品の詳細	Rabbit polyclonal to smooth muscle Myosin heavy chain 11
由来種	Rabbit
特異性	<p>The immunogen used for this product shares 82% homology with non-muscle myosin 9. The cross-reactivity with this protein has not been confirmed experimentally.</p> <p>Replenishment batches of our polyclonal antibody, ab82541 are tested in WB. Previous batches were additionally validated in ICC. This application is still expected to work and is covered by our Abpromise guarantee. You may also be interested in our alternative recombinant antibody, <u>ab124679</u>.</p>
アプリケーション	適用あり: WB, ICC
種交差性	<p>交差種: Human</p> <p>交差が予測される動物種: Mouse, Rat, Rabbit, Cow, Orangutan </p>
免疫原	<p>Synthetic peptide corresponding to Human smooth muscle Myosin heavy chain 11 aa 550-650 conjugated to keyhole limpet haemocyanin.</p> <p>(Peptide available as <u>ab93494</u>)</p>
ポジティブ・コントロール	WB: Bladder tissue; Heart tissue; PC3 whole cell; HUVEC whole cell. ICC: SV40LT-SMC cell line.
特記事項	<p>The Life Science industry has been in the grips of a reproducibility crisis for a number of years. Abcam is leading the way in addressing this with our range of recombinant monoclonal antibodies and knockout edited cell lines for gold-standard validation. Please check that this product meets your needs before purchasing.</p> <p>If you have any questions, special requirements or concerns, please send us an inquiry and/or contact our Support team ahead of purchase. Recommended alternatives for this product can be found below, along with publications, customer reviews and Q&As</p>

製品の特性

製品の状態	Liquid
保存方法	Shipped at 4°C. Store at +4°C short term (1-2 weeks). Upon delivery aliquot. Store at -20°C or -80°C. Avoid freeze / thaw cycle.
バッファー	pH: 7.40

Preservative: 0.02% Sodium azide
Constituent: PBS

Batches of this product that have a concentration < 1mg/ml may have BSA added as a stabilising agent. If you would like information about the formulation of a specific lot, please contact our scientific support team who will be happy to help.

精製度 Immunogen affinity purified
ポリモノ ポリクローナル
アイソタイプ IgG

アプリケーション

The Abpromise guarantee **Abpromise保証は、次のテスト済みアプリケーションにおけるab82541の使用に適用されます**
アプリケーションノートには、推奨の開始希釈率がありますが、適切な希釈率につきましてはご検討ください。

アプリケーション	Abreviews	特記事項
WB	★★★★☆ (2)	Use a concentration of 1 µg/ml. Detects a band of approximately 227 kDa (predicted molecular weight: 227 kDa).
ICC		Use a concentration of 1 µg/ml.

ターゲット情報

機能 Muscle contraction.

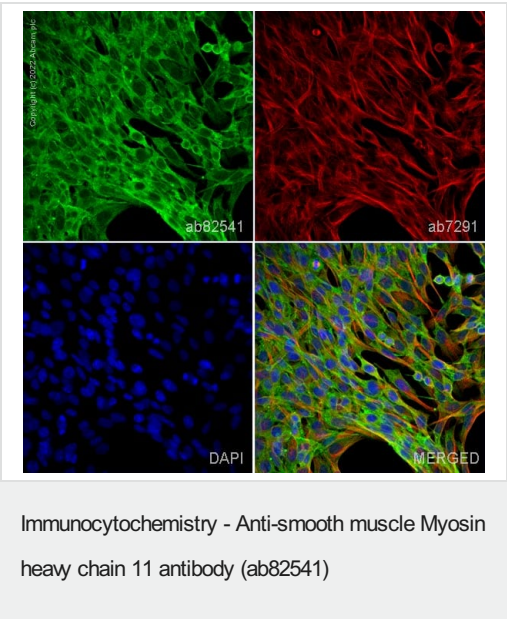
組織特異性 Smooth muscle; expressed in the umbilical artery, bladder, esophagus and trachea.

関連疾患 Note=A chromosomal aberration involving MYH11 is found in acute myeloid leukemia of M4EO subtype. Pericentric inversion inv(16)(p13;q22). The inversion produces a fusion protein consisting of the 165 N-terminal residues of CBF-beta (PEPB2) and the tail region of MYH11. Defects in MYH11 are the cause of aortic aneurysm familial thoracic type 4 (AAT4) [MIM:132900]; also known as familial thoracic aortic aneurysm and dissection (TAAD). Aneurysms and dissections of the aorta usually result from degenerative changes in the aortic wall. Thoracic aortic aneurysms and dissections are primarily associated with a characteristic histologic appearance known as 'medial necrosis' or 'Erdheim cystic medial necrosis' in which there is degeneration and fragmentation of elastic fibers, loss of smooth muscle cells, and an accumulation of basophilic ground substance. Patients with AAT4 show marked aortic stiffness. Pathological aortas show large areas of medial degeneration with very low smooth muscle cells content.

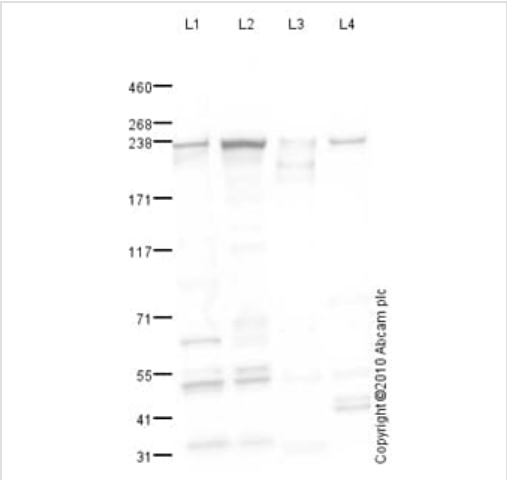
配列類似性 Contains 1 IQ domain.
Contains 1 myosin head-like domain.

ドメイン The rodlike tail sequence is highly repetitive, showing cycles of a 28-residue repeat pattern composed of 4 heptapeptides, characteristic for alpha-helical coiled coils.
Each myosin heavy chain can be split into 1 light meromyosin (LMM) and 1 heavy meromyosin (HMM). It can later be split further into 2 globular subfragments (S1) and 1 rod-shaped subfragment (S2).

細胞内局在 Melanosome. Identified by mass spectrometry in melanosome fractions from stage I to stage IV.
Thick filaments of the myofibrils.



Immunocytochemistry - Anti-smooth muscle Myosin heavy chain 11 antibody (ab82541)



Western blot - Anti-smooth muscle Myosin heavy chain 11 antibody (ab82541)

ab82541 staining smooth muscle Myosin heavy chain 11 in SV40LT-SMC cells. The cells were fixed with 100% methanol (5 min), permeabilized with 0.1% PBS-Triton X-100 for 5 minutes and then blocked with 1% BSA/10% normal goat serum/0.3M glycine in 0.1%PBS-Tween for 1h. The cells were then incubated overnight at 4°C with ab82541 at 1µg/ml and [ab6046](#), Rabbit polyclonal to beta Tubulin - Loading Control. Cells were then incubated with [ab150117](#), Goat polyclonal Secondary Antibody to Mouse IgG H&L (Alexa Fluor® 488) preadsorbed at 1/1000 dilution (shown in green) and [ab150080](#), Goat polyclonal Secondary Antibody to Rabbit IgG - H&L (Alexa Fluor® 594) at 1/1000 dilution (shown in pseudocolour red). Nuclear DNA was labelled with DAPI (shown in blue).

Also suitable in cells fixed with 4% paraformaldehyde (10 min).

Image was acquired with a high-content analyser (Operetta CLS, Perkin Elmer) and a maximum intensity projection of confocal sections is shown.

All lanes : Anti-smooth muscle Myosin heavy chain 11 antibody (ab82541) at 1 µg/ml

Lane 1 : PC3 (Human prostate carcinoma cell line) Whole Cell Lysate Whole Cell Lysate

Lane 2 : HUVEC (Human Umbilical Vein Endothelial Cell) Whole Cell Lysate

Lane 3 : Human bladder tissue lysate - soluble fraction (female, 45 years) ([ab44654](#))

Lane 4 : Human heart tissue lysate - total protein ([ab29431](#))

Lysates/proteins at 10 µg per lane.

Secondary

All lanes : Goat polyclonal to Rabbit IgG - H&L - Pre-Adsorbed (HRP) at 1/3000 dilution

Developed using the ECL technique.

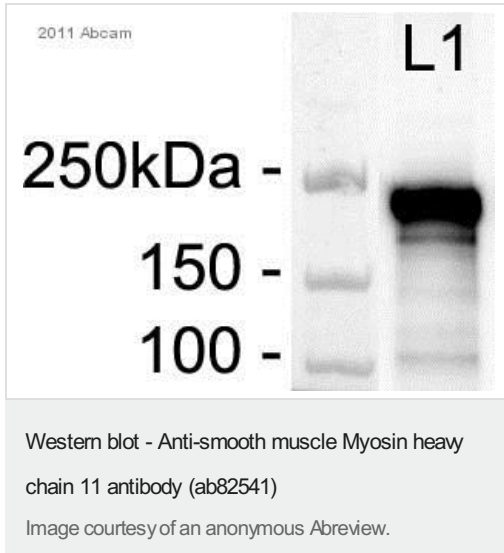
Performed under reducing conditions.

Predicted band size: 227 kDa

Observed band size: 227 kDa

Additional bands at: 49 kDa, 64 kDa. We are unsure as to the identity of these extra bands.

Exposure time: 30 seconds



Anti-smooth muscle Myosin heavy chain 11 antibody (ab82541) at 1/2000 dilution + whole cell lysate prepared from human PASM, P6 at 300 µg

Secondary

HRP conjugated goat anti-rabbit polyclonal at 1/2000 dilution

Developed using the ECL technique.

Predicted band size: 227 kDa

Observed band size: 227 kDa

Additional bands at: 100 kDa, 200 kDa. We are unsure as to the identity of these extra bands.

Exposure time: 20 seconds

Please note: All products are "FOR RESEARCH USE ONLY. NOT FOR USE IN DIAGNOSTIC PROCEDURES"

Our Abpromise to you: Quality guaranteed and expert technical support

- Replacement or refund for products not performing as stated on the datasheet
- Valid for 12 months from date of delivery
- Response to your inquiry within 24 hours
- We provide support in Chinese, English, French, German, Japanese and Spanish
- Extensive multi-media technical resources to help you
- We investigate all quality concerns to ensure our products perform to the highest standards

If the product does not perform as described on this datasheet, we will offer a refund or replacement. For full details of the Abpromise, please visit <https://www.abcam.co.jp/abpromise> or contact our technical team.

Terms and conditions

- Guarantee only valid for products bought direct from Abcam or one of our authorized distributors