


Anti-Smg1 antibody ab80600

[1 References](#) [画像数 2](#)

製品の概要

製品名	Anti-Smg1 antibody
製品の詳細	Rabbit polyclonal to Smg1
由来種	Rabbit
アプリケーション	適用あり: WB, IP
種交差性	交差種: Human 交差が予測される動物種: Mouse, Rabbit, Guinea pig, Cow, Dog, Chimpanzee, Rhesus monkey, Orangutan, Platypus 
免疫原	Synthetic peptide within Human Smg1 aa 1250-1300. The exact sequence is proprietary. Database link: NP_055907.3
ポジティブ・コントロール	HeLa cell lysate
特記事項	<p>The Life Science industry has been in the grips of a reproducibility crisis for a number of years. Abcam is leading the way in addressing this with our range of recombinant monoclonal antibodies and knockout edited cell lines for gold-standard validation. Please check that this product meets your needs before purchasing.</p> <p>If you have any questions, special requirements or concerns, please send us an inquiry and/or contact our Support team ahead of purchase. Recommended alternatives for this product can be found below, along with publications, customer reviews and Q&As</p>

製品の特性

製品の状態	Liquid
保存方法	Shipped at 4°C. Upon delivery aliquot and store at -20°C. Avoid freeze / thaw cycles.
バッファー	pH: 7 Preservative: 0.09% Sodium azide Constituents: 1.764% Sodium citrate, 1.815% Tris, 0.021% PBS
精製度	Immunogen affinity purified
ポリ/モノ	ポリクローナル
アイソタイプ	IgG

アプリケーション

The Abpromise guarantee **Abpromise保証は、次のテスト済みアプリケーションにおけるab80600の使用に適用されず**

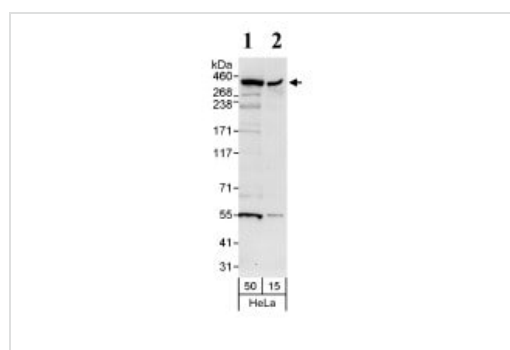
アプリケーションノートには、推奨の開始希釈率がありますが、適切な希釈率につきましてはご検討ください。

アプリケーション	Abreviews	特記事項
WB		1/1000 - 1/10000. Predicted molecular weight: 410 kDa.
IP		Use at 2-5 µg/mg of lysate.

ターゲット情報

機能	Serine/threonine protein kinase involved in both mRNA surveillance and genotoxic stress response pathways. Recognizes the substrate consensus sequence [ST]-Q. Plays a central role in nonsense-mediated decay (NMD) of mRNAs containing premature stop codons by phosphorylating UPF1/RENT1. Recruited by release factors to stalled ribosomes together with SMG8 and SMG9 (forming the SMG1C protein kinase complex), and UPF1 to form the transient SURF (SMG1-UPF1-eRF1-eRF3) complex. In EJC-dependent NMD, the SURF complex associates with the exon junction complex (EJC) through UPF2 and allows the formation of an UPF1-UPF2-UPF3 surveillance complex which is believed to activate NMD. Also acts as a genotoxic stress-activated protein kinase that displays some functional overlap with ATM. Can phosphorylate p53/TP53 and is required for optimal p53/TP53 activation after cellular exposure to genotoxic stress. Its depletion leads to spontaneous DNA damage and increased sensitivity to ionizing radiation (IR). May activate PRKCI but not PRKCZ.
組織特異性	Widely expressed, with highest level in heart and skeletal muscle. Expressed in placenta, brain, lung and spleen, but not in liver.
配列類似性	Belongs to the PI3/PI4-kinase family. Contains 1 FAT domain. Contains 1 FATC domain. Contains 1 HEAT repeat. Contains 1 PI3K/PI4K domain.
翻訳後修飾	Autophosphorylated.
細胞内局在	Nucleus. Cytoplasm.

画像



Western blot - Anti-Smg1 antibody (ab80600)

All lanes : Anti-Smg1 antibody (ab80600) at 1 µg/ml

Lane 1 : Whole HeLa cell lysate at 50 µg

Lane 2 : Whole HeLa cell lysate at 15 µg

Developed using the ECL technique.

Predicted band size: 410 kDa

Observed band size: 410 kDa

Additional bands at: 55 kDa. We are unsure as to the identity of

these extra bands.

Chemiluminescence with exposure times of 30 seconds



Detection of Human Smg1 by Immunoprecipitation. Sample: Whole cell lysate (1 mg for IP, 20% of IP loaded) from HeLa cells. ab80600 used for IP at 3 mcg/mg lysate. Subsequent Wb detection with ab80600 used at 1 mcg/ml. Chemiluminescence with exposure times of 3 mins

Please note: All products are "FOR RESEARCH USE ONLY. NOT FOR USE IN DIAGNOSTIC PROCEDURES"

Our Abpromise to you: Quality guaranteed and expert technical support

- Replacement or refund for products not performing as stated on the datasheet
- Valid for 12 months from date of delivery
- Response to your inquiry within 24 hours
- We provide support in Chinese, English, French, German, Japanese and Spanish
- Extensive multi-media technical resources to help you
- We investigate all quality concerns to ensure our products perform to the highest standards

If the product does not perform as described on this datasheet, we will offer a refund or replacement. For full details of the Abpromise, please visit <https://www.abcam.co.jp/abpromise> or contact our technical team.

Terms and conditions

- Guarantee only valid for products bought direct from Abcam or one of our authorized distributors