


Anti-SMEK2 antibody ab70622

1 References [画像数 3](#)

製品の概要

製品名	Anti-SMEK2 antibody
製品の詳細	Rabbit polyclonal to SMEK2
由来種	Rabbit
アプリケーション	適用あり: IHC-P, WB, IP
種交差性	交差種: Mouse, Human 交差が予測される動物種: Chinese hamster 
免疫原	Synthetic peptide corresponding to Human SMEK2 aa 700-800 (C terminal). Synthetic peptide corresponding to a region between residue 715 and the C-terminus (residue 764) of human SMEK2 (NP_065196.1) Database link: Q5MIZ7
ポジティブ・コントロール	Whole cell lysates from HeLa, 293T and NIH3T3 cells.
特記事項	<p>The Life Science industry has been in the grips of a reproducibility crisis for a number of years. Abcam is leading the way in addressing this with our range of recombinant monoclonal antibodies and knockout edited cell lines for gold-standard validation. Please check that this product meets your needs before purchasing.</p> <p>If you have any questions, special requirements or concerns, please send us an inquiry and/or contact our Support team ahead of purchase. Recommended alternatives for this product can be found below, along with publications, customer reviews and Q&As</p>

製品の特性

製品の状態	Liquid
保存方法	Shipped at 4°C. Upon delivery aliquot and store at -20°C. Avoid freeze / thaw cycles.
バッファー	pH: 6.8 Preservative: 0.09% Sodium azide Constituents: 0.1% BSA, Tris buffered saline
精製度	Immunogen affinity purified
ポリ/モノ	ポリクローナル
アイソタイプ	IgG

アプリケーション

The Abpromise guarantee Abpromise保証は、 次のテスト済みアプリケーションにおけるab70622の使用に適用されます
アプリケーションノートには、推奨の開始希釈率がありますが、適切な希釈率につきましてはご検討ください。

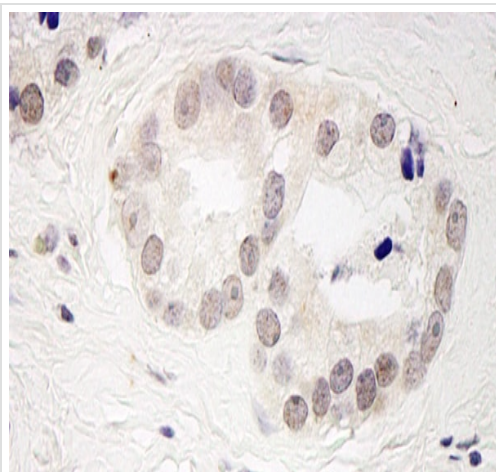
アプリケーション	Abreviews	特記事項
IHC-P		1/100 - 1/500. Perform heat mediated antigen retrieval with Tris/EDTA buffer pH 9.0 before commencing with IHC staining protocol.
WB		1/2000 - 1/10000. Detects a band of approximately 97 kDa (predicted molecular weight: 97 kDa).
IP		Use at 2-5 µg/mg of lysate.

ターゲット情報

関連性 SMEK2 contains a WH1 domain. There are five named isoforms produced by alternative splicing. Mapping of a diet-induced hypercholesterolemia locus (Dihc2) in rats identified SMEK2 as a strong candidate for responsiveness to dietary cholesterol.

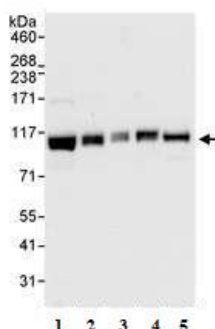
細胞内局在 Cytoplasm. Cytoskeleton. Centrosome. Nucleus. Note: In interphase localized in the cytoplasm and (with higher levels) the nucleus. During metaphase located in pericentriolar regions.

画像



Immunohistochemistry (Formalin/PFA-fixed paraffin-embedded sections) analysis of human prostate carcinoma tissue labelling SMEK2 with ab70622 at 1/200 (1 µg/ml). Detection: DAB.

Immunohistochemistry (Formalin/PFA-fixed paraffin-embedded sections) - Anti-SMEK2 antibody (ab70622)



Western blot - Anti-SMEK2 antibody (ab70622)

All lanes : Anti-SMEK2 antibody (ab70622) at 0.04 µg/ml

Lane 1 : HeLa whole cell lysate at 50 µg

Lane 2 : HeLa whole cell lysate at 15 µg

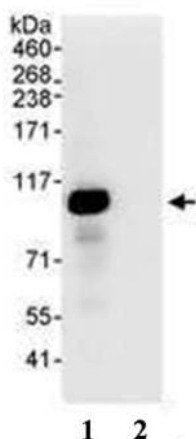
Lane 3 : HeLa whole cell lysate at 5 µg

Lane 4 : 293T whole cell lysate at 50 µg

Lane 5 : NIH3T3 whole cell lysate at 50 µg

Predicted band size: 97 kDa

Observed band size: 97 kDa



Immunoprecipitation - Anti-SMEK2 antibody
(ab70622)

Immunoprecipitation of HeLa whole cell lysate (1 mg) using ab70622 at 3 µg/ml (lane 1) or control IgG (lane 2). 20% of immunoprecipitate was analysed by Western blot using ab70622 at 1 µg/ml.

Please note: All products are "FOR RESEARCH USE ONLY. NOT FOR USE IN DIAGNOSTIC PROCEDURES"

Our Abpromise to you: Quality guaranteed and expert technical support

- Replacement or refund for products not performing as stated on the datasheet
- Valid for 12 months from date of delivery
- Response to your inquiry within 24 hours
- We provide support in Chinese, English, French, German, Japanese and Spanish
- Extensive multi-media technical resources to help you
- We investigate all quality concerns to ensure our products perform to the highest standards

If the product does not perform as described on this datasheet, we will offer a refund or replacement. For full details of the Abpromise, please visit <https://www.abcam.co.jp/abpromise> or contact our technical team.

Terms and conditions

- Guarantee only valid for products bought direct from Abcam or one of our authorized distributors