

Anti-SMCHD1 antibody ab31865

★★★★★ [2 Abreviews](#) [17 References](#) [画像数 2](#)

製品の概要

製品名	Anti-SMCHD1 antibody
製品の詳細	Rabbit polyclonal to SMCHD1
由来種	Rabbit
アプリケーション	適用あり: ICC/IF, WB, ChIP
種交差性	交差種: Mouse, Human
免疫原	Synthetic peptide corresponding to Human SMCHD1 aa 1750-1850 conjugated to keyhole limpet haemocyanin. (Peptide available as ab31864)

特記事項

The Life Science industry has been in the grips of a reproducibility crisis for a number of years. Abcam is leading the way in addressing this with our range of recombinant monoclonal antibodies and knockout edited cell lines for gold-standard validation. Please check that this product meets your needs before purchasing.

If you have any questions, special requirements or concerns, please send us an inquiry and/or contact our Support team ahead of purchase. Recommended alternatives for this product can be found below, along with publications, customer reviews and Q&As

製品の特性

製品の状態	Liquid
保存方法	Shipped at 4°C. Store at +4°C short term (1-2 weeks). Upon delivery aliquot. Store at -20°C or -80°C. Avoid freeze / thaw cycle.
バッファー	pH: 7.40 Preservative: 0.02% Sodium azide Constituent: PBS
精製度	Batches of this product that have a concentration < 1mg/ml may have BSA added as a stabilising agent. If you would like information about the formulation of a specific lot, please contact our scientific support team who will be happy to help.
ポリ/モノ	ポリクローナル
アイソタイプ	IgG

アプリケーション

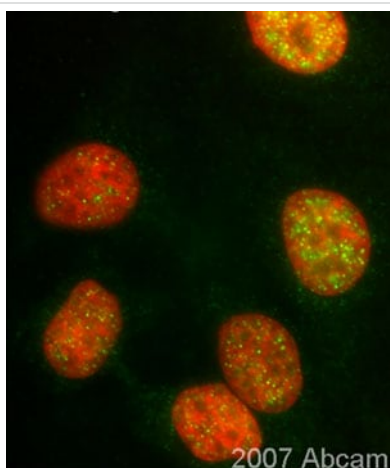
The Abpromise guarantee Abpromise保証は、 次のテスト済みアプリケーションにおけるab31865の使用に適用されます

アプリケーションノートには、推奨の開始希釈率がありますが、適切な希釈率につきましてはご検討ください。

アプリケーション	Abreviews	特記事項
ICC/IF	★★★★★ (1)	1/100.
WB	★★★★★ (1)	Use at an assay dependent concentration. Predicted molecular weight: 226 kDa. PubMed: 21836164
ChIP		Use at an assay dependent concentration. PubMed: 28587678

ターゲット情報

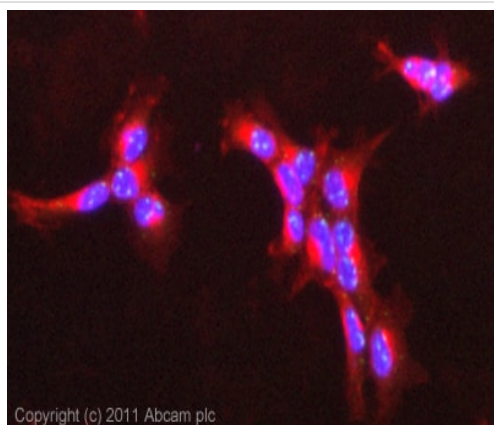
画像



ab31865 (1/100) staining SMCHD1 by immunofluorescence in asynchronous HeLa cells (green). Secondary antibody: goat polyclonal antibody conjugated to Cy3; Counterstain: DAPI (red). Please refer to Abreview for further information.

Immunocytochemistry/ Immunofluorescence - Anti-SMCHD1 antibody (ab31865)

This image is courtesy of an Abreview submitted by Dr Kirk McManus



Immunocytochemistry/ Immunofluorescence - Anti-SMCHD1 antibody (ab31865)

ICC/IF image of ab31865 stained Hek293 cells. The cells were 100% methanol fixed (5 min) and then incubated in 1%BSA / 10% normal goat serum / 0.3M glycine in 0.1% PBS-Tween for 1h to permeabilise the cells and block non-specific protein-protein interactions. The cells were then incubated with the antibody (ab31865, 5µg/ml) overnight at +4°C. The secondary antibody (green) was **ab96899**, DyLight® 488 goat anti-rabbit IgG (H+L) used at a 1/250 dilution for 1h. Alexa Fluor® 594 WGA was used to label plasma membranes (red) at a 1/200 dilution for 1h. DAPI was used to stain the cell nuclei (blue) at a concentration of 1.43µM. This antibody also gave a positive result in 100% methanol fixed (5 min) HeLa, HepG2 and MCF7 cells at 5µg/ml, and in 4% PFA fixed (10 min) HeLa, Hek293, HepG2 and MCF7 cells at 5µg/ml.

Please note: All products are "FOR RESEARCH USE ONLY. NOT FOR USE IN DIAGNOSTIC PROCEDURES"

Our Abpromise to you: Quality guaranteed and expert technical support

- Replacement or refund for products not performing as stated on the datasheet
- Valid for 12 months from date of delivery
- Response to your inquiry within 24 hours
- We provide support in Chinese, English, French, German, Japanese and Spanish
- Extensive multi-media technical resources to help you
- We investigate all quality concerns to ensure our products perform to the highest standards

If the product does not perform as described on this datasheet, we will offer a refund or replacement. For full details of the Abpromise, please visit <https://www.abcam.co.jp/abpromise> or contact our technical team.

Terms and conditions

- Guarantee only valid for products bought direct from Abcam or one of our authorized distributors