


### Anti-SMC4 antibody ab17958

**12 References**   **画像数 1**

#### 製品の概要

|          |   |
|----------|---|
| 製品名      | Anti-SMC4 antibody  |
| 製品の詳細    | Rabbit polyclonal to SMC4   |
| 由来種      | Rabbit  |
| アプリケーション | <b>適用あり:</b> WB   |
| 種交差性     | <b>交差種:</b> Human<br><b>交差が予測される動物種:</b> Rat, Rabbit, Guinea pig, Cow, Pig, Chimpanzee, Rhesus monkey, Gorilla, Chinese hamster, Orangutan, Elephant   |
| 免疫原      | Synthetic peptide representing a portion of human SMC4 lying within exon 23 (C terminal).   |
| 特記事項     | <p>The Life Science industry has been in the grips of a reproducibility crisis for a number of years. Abcam is leading the way in addressing this with our range of recombinant monoclonal antibodies and knockout edited cell lines for gold-standard validation. Please check that this product meets your needs before purchasing.</p> <p>If you have any questions, special requirements or concerns, please send us an inquiry and/or contact our Support team ahead of purchase. Recommended alternatives for this product can be found below, along with publications, customer reviews and Q&amp;As</p> |

#### 製品の特性

|        |   |
|--------|---|
| 製品の状態  | Liquid  |
| 保存方法   | Shipped at 4°C. Store at +4°C short term (1-2 weeks). Upon delivery aliquot. Store at -20°C. Avoid freeze / thaw cycle. |
| バッファー  | <p>pH: 7</p> <p>Preservative: 0.1% Sodium azide</p> <p>Constituents: 0.021% PBS, 1.764% Sodium citrate, 1.815% Tris</p> |
| 精製度    | Immunogen affinity purified   |
| ポリ/モノ  | ポリクローナル   |
| アイソタイプ | IgG   |

#### アプリケーション

## The Abpromise guarantee

**Abpromise保証は、次のテスト済みアプリケーションにおけるab17958の使用に適用されます**

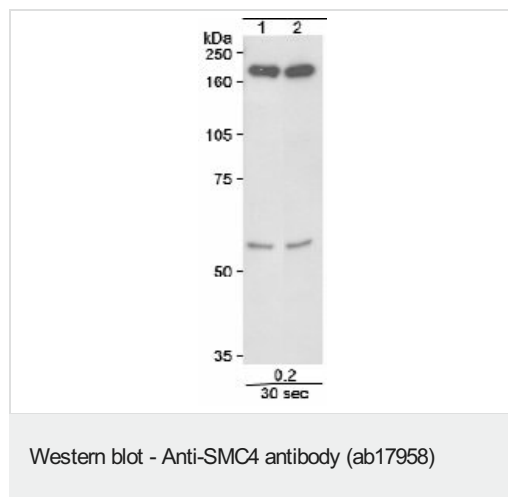
アプリケーションノートには、推奨の開始希釈率がありますが、適切な希釈率につきましてはご検討ください。

| アプリケーション | Abreviews | 特記事項   |
|----------|-----------|--|
| WB       |           | 1/1000 - 1/10000. Detects a band of approximately 200 kDa (predicted molecular weight: 150 kDa). |

## ターゲット情報

|       |   |
|-------|---|
| 機能    | Central component of the condensin complex, a complex required for conversion of interphase chromatin into mitotic-like condense chromosomes. The condensin complex probably introduces positive supercoils into relaxed DNA in the presence of type I topoisomerases and converts nicked DNA into positive knotted forms in the presence of type II topoisomerases.  |
| 組織特異性 | Widely expressed. Higher expression in testis, colon, thymus.   |
| 配列類似性 | Belongs to the SMC family. SMC4 subfamily.  |
| ドメイン  | The hinge domain, which separates the large intramolecular coiled coil regions, allows the heterodimerization with SMC2, forming a V-shaped heterodimer.  |
| 細胞内局在 | Nucleus. Cytoplasm. Chromosome. In interphase cells, the majority of the condensin complex is found in the cytoplasm, while a minority of the complex is associated with chromatin. A subpopulation of the complex however remains associated with chromosome foci in interphase cells. During mitosis, most of the condensin complex is associated with the chromatin. At the onset of prophase, the regulatory subunits of the complex are phosphorylated by CDC2, leading to condensin's association with chromosome arms and to chromosome condensation. Dissociation from chromosomes is observed in late telophase. |

## 画像



ab17958 at 0.2µg/ml detecting SMC4 from 90µg of whole cell lysate from 293T cells (left hand lane) or from normal human lymphoblasts (right hand lane) by western blot. The blot was detected by ECL. ab17958 at 0.2µg/ml detecting SMC4 from 90µg of whole cell lysate from 293T cells (left hand lane) or from normal human lymphoblasts (right hand lane) by western blot. The blot was detected by ECL.

**Please note:** All products are "FOR RESEARCH USE ONLY. NOT FOR USE IN DIAGNOSTIC PROCEDURES"

**Our Abpromise to you: Quality guaranteed and expert technical support**

- Replacement or refund for products not performing as stated on the datasheet
- Valid for 12 months from date of delivery
- Response to your inquiry within 24 hours
- We provide support in Chinese, English, French, German, Japanese and Spanish
- Extensive multi-media technical resources to help you
- We investigate all quality concerns to ensure our products perform to the highest standards

If the product does not perform as described on this datasheet, we will offer a refund or replacement. For full details of the Abpromise, please visit <https://www.abcam.co.jp/abpromise> or contact our technical team.

#### **Terms and conditions**

---

- Guarantee only valid for products bought direct from Abcam or one of our authorized distributors