

### Anti-SMC2 antibody ab10399

★★★★★ [3 Abreviews](#) [8 References](#) [画像数 2](#)

#### 製品の概要

製品名	Anti-SMC2 antibody
製品の詳細	Rabbit polyclonal to SMC2
由来種	Rabbit
アプリケーション	<b>適用あり:</b> WB, IHC-P
種交差性	<b>交差種:</b> Human <b>交差が予測される動物種:</b> Rabbit, Horse, Guinea pig, Cow, Dog, Pig, Xenopus laevis, Chimpanzee, Ferret, Rhesus monkey, Gorilla, Orangutan 
免疫原	Synthetic peptide corresponding to Human SMC2 aa 50-150. The epitope maps to a region between residues 50 and 100 of human Structural Maintenance of Chromosomes 2 using the numbering given in entry NP_006435.1 (GeneID 10592). Database link: <a href="#">O95347</a>
ポジティブ・コントロール	WB: Mock transfected or SMC2 transfected HEK-293T whole cell lysates. IHC-P: Human cerebral cortex tissue.
特記事項	<p>The Life Science industry has been in the grips of a reproducibility crisis for a number of years. Abcam is leading the way in addressing this with our range of recombinant monoclonal antibodies and knockout edited cell lines for gold-standard validation. Please check that this product meets your needs before purchasing.</p> <p>If you have any questions, special requirements or concerns, please send us an inquiry and/or contact our Support team ahead of purchase. Recommended alternatives for this product can be found below, along with publications, customer reviews and Q&amp;As</p>

#### 製品の特性

製品の状態	Liquid
保存方法	Shipped at 4°C. Upon delivery aliquot and store at -20°C. Avoid freeze / thaw cycles.
バッファー	pH: 7 Preservative: 0.1% Sodium azide Constituents: 0.021% PBS, 1.764% Sodium citrate, 1.815% Tris
精製度	Immunogen affinity purified
特記事項(精製)	Antibodies were affinity purified using the peptide immobilized on solid support.
ポリ/モノ	ポリクローナル

アプリケーション

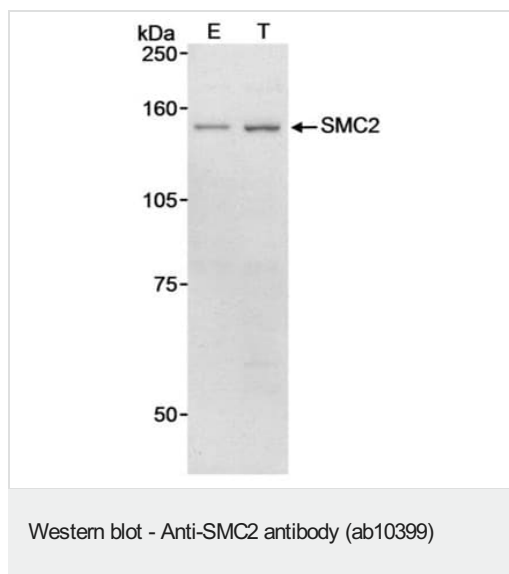
**The Abpromise guarantee**      Abpromise保証は、次のテスト済みアプリケーションにおけるab10399の使用に適用されます  
アプリケーションノートには、推奨の開始希釈率がありますが、適切な希釈率につきましてはご検討ください。

アプリケーション	Abreviews	特記事項
WB	★★★★★ (2)	1/5000 - 1/20000. Detects a band of approximately 150 kDa (predicted molecular weight: 143 kDa).
IHC-P		Use a concentration of 5 µg/ml. Perform heat mediated antigen retrieval with citrate buffer pH 6 before commencing with IHC staining protocol.

ターゲット情報

機能	Central component of the condensin complex, a complex required for conversion of interphase chromatin into mitotic-like condense chromosomes. The condensin complex probably introduces positive supercoils into relaxed DNA in the presence of type I topoisomerases and converts nicked DNA into positive knotted forms in the presence of type II topoisomerases.
配列類似性	Belongs to the SMC family. SMC2 subfamily.
ドメイン	The hinge domain, which separates the large intramolecular coiled coil regions, allows the heterodimerization with SMC4, forming a V-shaped heterodimer.
細胞内局在	Nucleus. Cytoplasm. Chromosome. In interphase cells, the majority of the condensin complex is found in the cytoplasm, while a minority of the complex is associated with chromatin. A subpopulation of the complex however remains associated with chromosome foci in interphase cells. During mitosis, most of the condensin complex is associated with the chromatin. At the onset of prophase, the regulatory subunits of the complex are phosphorylated by CDC2, leading to condensin's association with chromosome arms and to chromosome condensation. Dissociation from chromosomes is observed in late telophase.

画像



**All lanes :** Anti-SMC2 antibody (ab10399) at 0.1 µg/ml

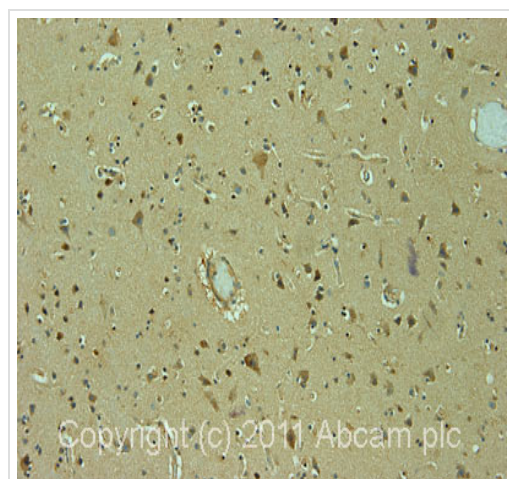
**Lane 1 :** E: Mock transfected HEK-293T (Human epithelial cell line from embryonic kidney transformed with large T antigen) whole cell lysate

**Lane 2 :** T: SMC2 transfected HEK-293T (Human epithelial cell line from embryonic kidney transformed with large T antigen) whole cell lysate

Lysates/proteins at 90 µg per lane.

**Predicted band size:** 143 kDa

**Exposure time:** 10 minutes



Immunohistochemistry (Formalin/PFA-fixed paraffin-embedded sections) - Anti-SMC2 antibody (ab10399)

IHC image of ab10399 staining in normal human cerebral cortex formalin fixed paraffin embedded tissue section, performed on a Leica Bond™ system using the standard protocol F. The section was pre-treated using heat mediated antigen retrieval with sodium citrate buffer (pH6, epitope retrieval solution 1) for 20 mins. The section was then incubated with ab10399, 5µg/ml, for 15 mins at room temperature and detected using an HRP conjugated compact polymer system. DAB was used as the chromogen. The section was then counterstained with haematoxylin and mounted with DPX.

For other IHC staining systems (automated and non-automated) customers should optimize variable parameters such as antigen retrieval conditions, primary antibody concentration and antibody incubation times.

**Please note:** All products are "FOR RESEARCH USE ONLY. NOT FOR USE IN DIAGNOSTIC PROCEDURES"

### **Our Abpromise to you: Quality guaranteed and expert technical support**

---

- Replacement or refund for products not performing as stated on the datasheet
- Valid for 12 months from date of delivery
- Response to your inquiry within 24 hours
  
- We provide support in Chinese, English, French, German, Japanese and Spanish
- Extensive multi-media technical resources to help you
- We investigate all quality concerns to ensure our products perform to the highest standards

If the product does not perform as described on this datasheet, we will offer a refund or replacement. For full details of the Abpromise, please visit <https://www.abcam.co.jp/abpromise> or contact our technical team.

### **Terms and conditions**

---

- Guarantee only valid for products bought direct from Abcam or one of our authorized distributors