


Anti-SMC1A antibody ab9262

★★★★★ **6 Abreviews** **40 References** 画像数 4

製品の概要

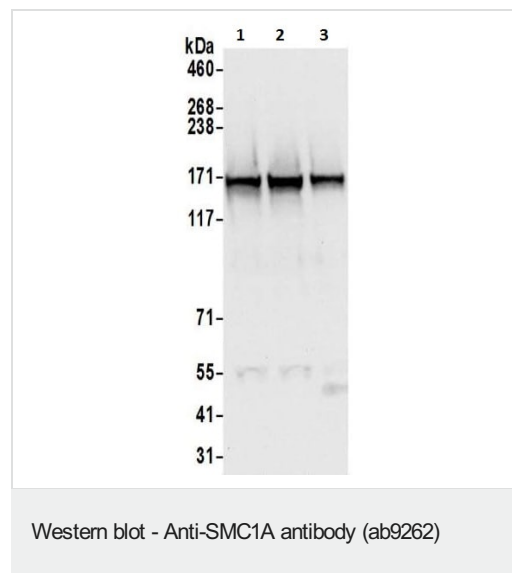
製品名	Anti-SMC1A antibody
製品の詳細	Rabbit polyclonal to SMC1A
由来種	Rabbit
アプリケーション	適用あり: IHC-P, IP, WB
種交差性	交差種: Mouse, Human 交差が予測される動物種: Rat, Cow 
免疫原	Synthetic peptide within Human SMC1A aa 1133-1233 conjugated to keyhole limpet haemocyanin. The exact sequence is proprietary. Database link: Q14683
ポジティブ・コントロール	WB: HeLa, 293T and NIH3T3 whole cell lysate. IHC-P: Human ovarian cancer tissue, mouse colon cancer tissue CT26. IP: HeLa whole cell lysate.
特記事項	<p>The Life Science industry has been in the grips of a reproducibility crisis for a number of years. Abcam is leading the way in addressing this with our range of recombinant monoclonal antibodies and knockout edited cell lines for gold-standard validation. Please check that this product meets your needs before purchasing.</p> <p>If you have any questions, special requirements or concerns, please send us an inquiry and/or contact our Support team ahead of purchase. Recommended alternatives for this product can be found below, along with publications, customer reviews and Q&As</p>

製品の特性

製品の状態	Liquid
保存方法	Shipped at 4°C. Store at +4°C short term (1-2 weeks). Upon delivery aliquot. Store at -20°C. Avoid freeze / thaw cycle.
バッファー	pH: 7 Preservative: 0.1% Sodium azide Constituents: 0.021% PBS, 1.764% Sodium citrate, 1.815% Tris
精製度	Immunogen affinity purified
特記事項 (精製)	Antibodies were affinity purified using the peptide immobilized on solid support. Antibody concentration was determined by extinction coefficient: absorbance at 280nm of 1.4 equals 1.0 mg of IgG.

I, and may be replaced by a meiosis-specific cohesin complex. The phosphorylated form on Ser-957 and Ser-966 associates with chromatin during G1/S/G2 phases but not during M phase, suggesting that phosphorylation does not regulate cohesin function. Integral component of the functional centromere-kinetochore complex at the kinetochore region during mitosis.

画像



All lanes : Anti-SMC1A antibody (ab9262) at 0.1 µg/ml

Lane 1 : HeLa whole cell lysate

Lane 2 : 293T whole cell lysate

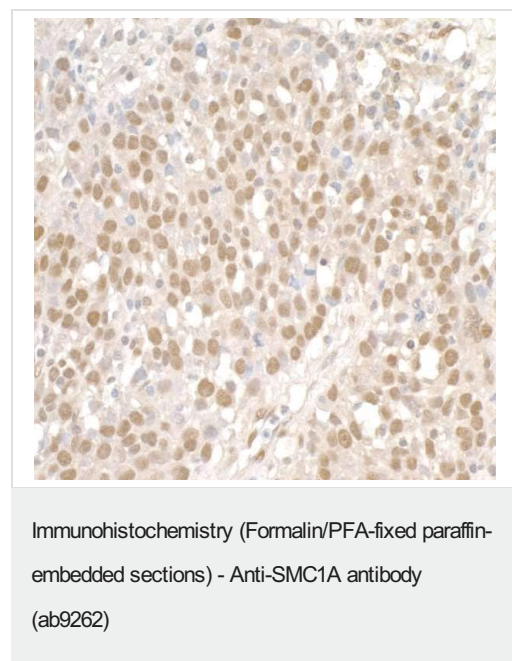
Lane 3 : NIH3T3 whole cell lysate

Lysates/proteins at 50 µg per lane.

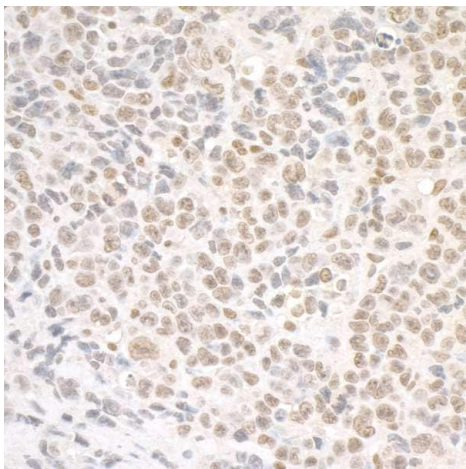
Predicted band size: 143 kDa

Exposure time: 3 seconds

Detection: Chemiluminescence.

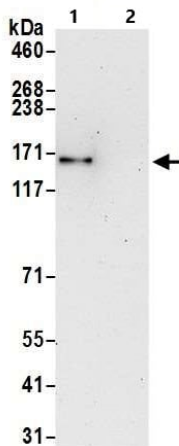


Immunohistochemical analysis of formalin-fixed, paraffin-embedded human ovarian cancer tissue, labeling SMC1 with ab9262 at 0.2 µg/mL. Detection: DAB.



Immunohistochemistry (Formalin/PFA-fixed paraffin-embedded sections) - Anti-SMC1A antibody (ab9262)

Immunohistochemical analysis of formalin-fixed, paraffin-embedded mouse colon cancer tissue CT26, labeling SMC1 with ab9262 at 0.2 µg/mL. Detection: DAB.



Immunoprecipitation - Anti-SMC1A antibody (ab9262)

SMC1A was immunoprecipitated from 1 mg HeLa whole cell lysate with ab9262 at 6 µg per reaction. Western blot was performed on the immunoprecipitate using [ab243875](#) at 1/1000 dilution.

Lysates prepared using NETN lysis buffer.

Lane 1: ab9262 IP in HeLa whole cell lysate.

Lane 2: Control IgG in HeLa whole cell lysate.

Detection: Chemiluminescence.

Exposure time: 10 seconds.

Please note: All products are "FOR RESEARCH USE ONLY. NOT FOR USE IN DIAGNOSTIC PROCEDURES"

Our Abpromise to you: Quality guaranteed and expert technical support

- Replacement or refund for products not performing as stated on the datasheet
- Valid for 12 months from date of delivery
- Response to your inquiry within 24 hours

- We provide support in Chinese, English, French, German, Japanese and Spanish
- Extensive multi-media technical resources to help you
- We investigate all quality concerns to ensure our products perform to the highest standards

If the product does not perform as described on this datasheet, we will offer a refund or replacement. For full details of the Abpromise, please visit <https://www.abcam.co.jp/abpromise> or contact our technical team.

Terms and conditions

- Guarantee only valid for products bought direct from Abcam or one of our authorized distributors