


Anti-SMARCA2 / BRM antibody ab15597

★★★★☆ [7 Abreviews](#) [68 References](#) [画像数 4](#)

製品の概要

製品名	Anti-SMARCA2 / BRM antibody
製品の詳細	Rabbit polyclonal to SMARCA2 / BRM
由来種	Rabbit
特異性	Specific for human Brm from human cell lines (it does not appear to cross react with Brg1 which has been the nemesis of some other so-called Brm-specific antibodies).
アプリケーション	適用あり: ICC/IF, WB
種交差性	交差種: Mouse, Human 交差が予測される動物種: Rat 
免疫原	Other Immunogen Type. This information is proprietary to Abcam and/or its suppliers.
特記事項	<p>The Life Science industry has been in the grips of a reproducibility crisis for a number of years. Abcam is leading the way in addressing this with our range of recombinant monoclonal antibodies and knockout edited cell lines for gold-standard validation. Please check that this product meets your needs before purchasing.</p> <p>If you have any questions, special requirements or concerns, please send us an inquiry and/or contact our Support team ahead of purchase. Recommended alternatives for this product can be found below, along with publications, customer reviews and Q&As</p>

製品の特性

製品の状態	Liquid
保存方法	Shipped at 4°C. Store at +4°C short term (1-2 weeks). Upon delivery aliquot. Store at -20°C or -80°C. Avoid freeze / thaw cycle.
バッファー	pH: 7.40 Preservative: 0.02% Sodium azide Constituent: PBS
精製度	Protein A purified
ポリ/モノ	ポリクローナル
アイソタイプ	IgG

アプリケーション

The Abpromise guarantee **Abpromise保証は、次のテスト済みアプリケーションにおけるab15597の使用に適用されます**

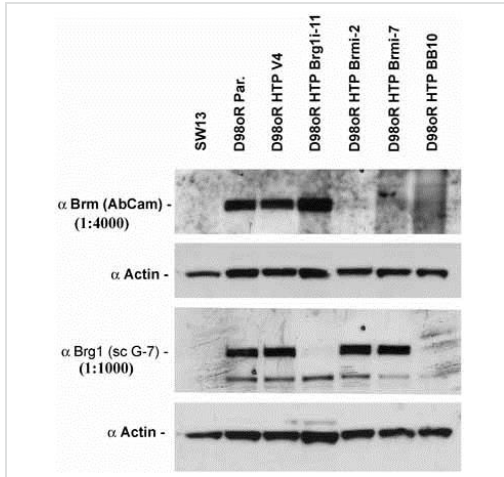
アプリケーションノートには、推奨の開始希釈率がありますが、適切な希釈率につきましてはご検討ください。

アプリケーション	Abreviews	特記事項
ICC/IF	★★★★★ (1)	Use at an assay dependent concentration.
WB	★★★★★ (3)	Use a concentration of 0.95 µg/ml. Detects a band of approximately 180 kDa (predicted molecular weight: 180 kDa).

ターゲット情報

機能	<p>Transcriptional coactivator cooperating with nuclear hormone receptors to potentiate transcriptional activation. Also involved in vitamin D-coupled transcription regulation via its association with the WINAC complex, a chromatin-remodeling complex recruited by vitamin D receptor (VDR), which is required for the ligand-bound VDR-mediated transrepression of the CYP27B1 gene. Belongs to the neural progenitors-specific chromatin remodeling complex (npBAF complex) and the neuron-specific chromatin remodeling complex (nBAF complex). During neural development a switch from a stem/progenitor to a post-mitotic chromatin remodeling mechanism occurs as neurons exit the cell cycle and become committed to their adult state. The transition from proliferating neural stem/progenitor cells to post-mitotic neurons requires a switch in subunit composition of the npBAF and nBAF complexes. As neural progenitors exit mitosis and differentiate into neurons, npBAF complexes which contain ACTL6A/BAF53A and PHF10/BAF45A, are exchanged for homologous alternative ACTL6B/BAF53B and DPF1/BAF45B or DPF3/BAF45C subunits in neuron-specific complexes (nBAF). The npBAF complex is essential for the self-renewal/proliferative capacity of the multipotent neural stem cells. The nBAF complex along with CREST plays a role regulating the activity of genes essential for dendrite growth.</p>
関連疾患	Nicolaiides-Baraitser syndrome
配列類似性	<p>Belongs to the SNF2/RAD54 helicase family.</p> <p>Contains 1 bromo domain.</p> <p>Contains 1 helicase ATP-binding domain.</p> <p>Contains 1 helicase C-terminal domain.</p> <p>Contains 1 HSA domain.</p> <p>Contains 1 QLQ domain.</p>
細胞内局在	Nucleus.

画像

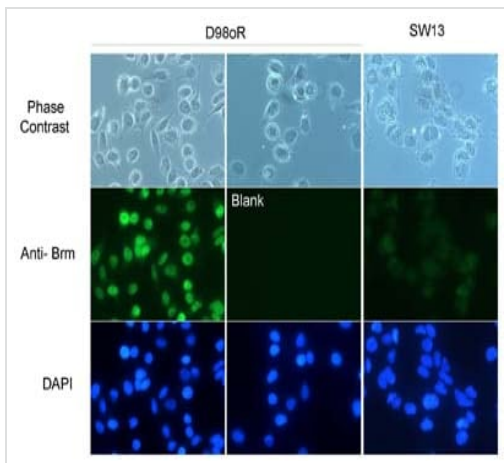


Western blot - Anti-SMARCA2 / BRM antibody (ab15597)

This image is courtesy of Gary Rosson

The WB image shows a composite of 2 western blots illustrating the specificity of the ab15597. The cell lines used here are as follows:

SW13- a human adrenal adenocarcinoma deficient in Brg1 and Brm (Neg. Control)



Immunocytochemistry/ Immunofluorescence - Anti-SMARCA2 / BRM antibody (ab15597)

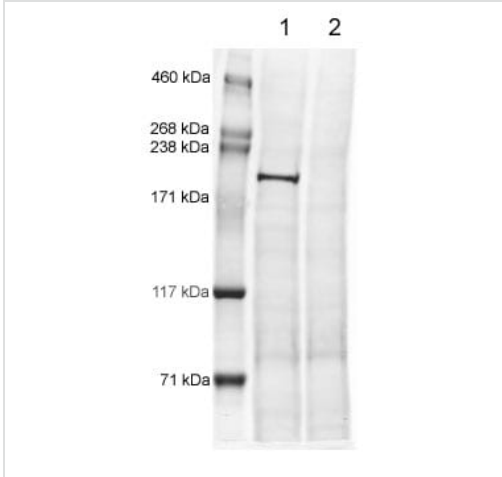
This image is courtesy of Garry Rosson, North Carolina at Chapel Hill

Immunofluorescence using the Brm antibody ab15597.

It appears the antibody works well in IF detecting BRM in D98oR WT cells. The D98oR BB10 blank omitted the primary antibody as a control. However, it was also positive on a cell line that has Brm knocked down by RNAi, (the BB10 cell line). This may be because RNAi is simply a knock down not a knock out or could be that the antibody is so good it is picking up the small amount of Brm remaining in the BB10s (highly possible), or the dilution is too high. Or, it may be that its crossreacting with another protein (though there was no cross reactivity with Brg1 in WB).

Original magnification 400x. ab15597 dilution 1:100.

Work is continuing on characterising this ab in IF.



Western blot - Anti-SMARCA2 / BRM antibody (ab15597)

All lanes : Anti-SMARCA2 / BRM antibody (ab15597) at 1 µg/ml

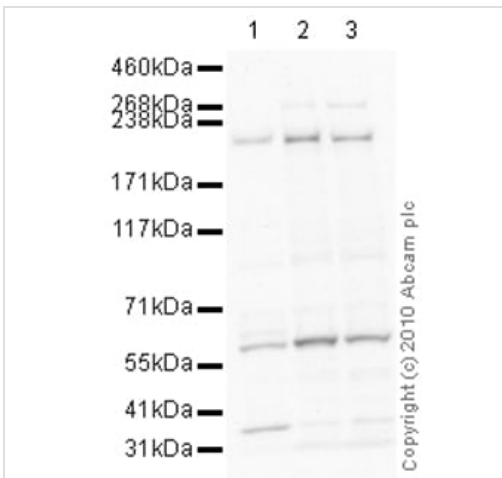
Lane 1 : D98oR (subclone HeLa) positive control lysate

Lane 2 : SW13 (Human adrenal adenocarcinoma) negative control lysate

Lysates/proteins at 20 µg per lane.

Predicted band size: 180 kDa

Observed band size: 180 kDa



Western blot - Anti-SMARCA2 / BRM antibody (ab15597)

All lanes : Anti-SMARCA2 / BRM antibody (ab15597) at 1 µg/ml

Lane 1 : Brain (Mouse) Tissue Lysate

Lane 2 : HeLa (Human epithelial carcinoma cell line) Whole Cell Lysate

Lane 3 : HEK293 (Human embryonic kidney cell line) Whole Cell Lysate

Lysates/proteins at 20 µg per lane.

Secondary

All lanes : Goat polyclonal to Rabbit IgG - H&L - Pre-Adsorbed (HRP) at 1/3000 dilution

Developed using the ECL technique.

Performed under reducing conditions.

Predicted band size: 180 kDa

Observed band size: 220 kDa

Additional bands at: 35 kDa, 60 kDa. We are unsure as to the identity of these extra bands.

Exposure time: 5 minutes

Please note: All products are "FOR RESEARCH USE ONLY. NOT FOR USE IN DIAGNOSTIC PROCEDURES"

Our Abpromise to you: Quality guaranteed and expert technical support

- Replacement or refund for products not performing as stated on the datasheet
- Valid for 12 months from date of delivery
- Response to your inquiry within 24 hours

- We provide support in Chinese, English, French, German, Japanese and Spanish
- Extensive multi-media technical resources to help you
- We investigate all quality concerns to ensure our products perform to the highest standards

If the product does not perform as described on this datasheet, we will offer a refund or replacement. For full details of the Abpromise, please visit <https://www.abcam.co.jp/abpromise> or contact our technical team.

Terms and conditions

- Guarantee only valid for products bought direct from Abcam or one of our authorized distributors