

Anti-SMAP2 antibody ab121675

画像数 4

製品の概要

製品名	Anti-SMAP2 antibody
製品の詳細	Rabbit polyclonal to SMAP2
由来種	Rabbit
アプリケーション	適用あり: IHC-P, ICC/IF, WB
種交差性	交差種: Mouse, Rat, Human
免疫原	antigen sequence, corresponding to C terminal amino acids 326-429 of Human SMAP2.
ポジティブ・コントロール	Human lymph node tissue; A431 cells; RT 4, U 251 MG, Human Liver and Tonsil cell lysates.
特記事項	<p>The Life Science industry has been in the grips of a reproducibility crisis for a number of years. Abcam is leading the way in addressing this with our range of recombinant monoclonal antibodies and knockout edited cell lines for gold-standard validation. Please check that this product meets your needs before purchasing.</p> <p>If you have any questions, special requirements or concerns, please send us an inquiry and/or contact our Support team ahead of purchase. Recommended alternatives for this product can be found below, along with publications, customer reviews and Q&As</p>

製品の特性

製品の状態	Liquid
保存方法	Shipped at 4°C. Upon delivery aliquot and store at -20°C. Avoid freeze / thaw cycles.
バッファー	pH: 7.20 Preservative: 0.02% Sodium azide Constituents: 59% PBS, 40% Glycerol (glycerin, glycerine)
精製度	Immunogen affinity purified
ポリ/モノ	ポリクローナル
アイソタイプ	IgG

アプリケーション

The Abpromise guarantee

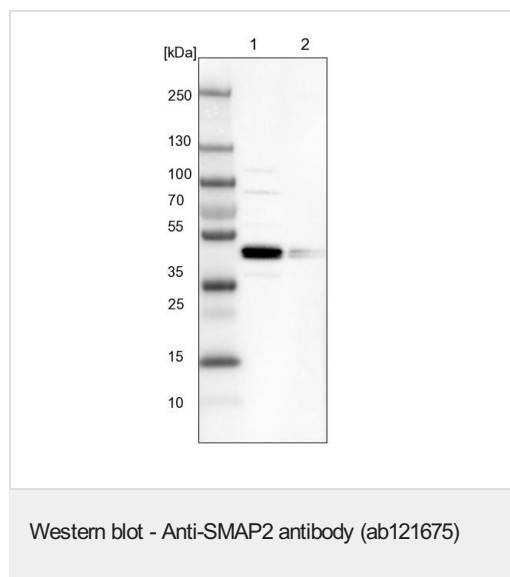
Abpromise保証は、次のテスト済みアプリケーションにおけるab121675の使用に適用されます
アプリケーションノートには、推奨の開始希釈率がありますが、適切な希釈率につきましてはご検討ください。

アプリケーション	Abreviews	特記事項
IHC-P		1/200 - 1/500. Perform heat mediated antigen retrieval with citrate buffer pH 6 before commencing with IHC staining protocol.
ICC/IF		Use a concentration of 1 - 4 µg/ml. Fixation/Permeabilization: PFA/Triton X-100
WB		Use a concentration of 0.04 - 0.4 µg/ml.

ターゲット情報

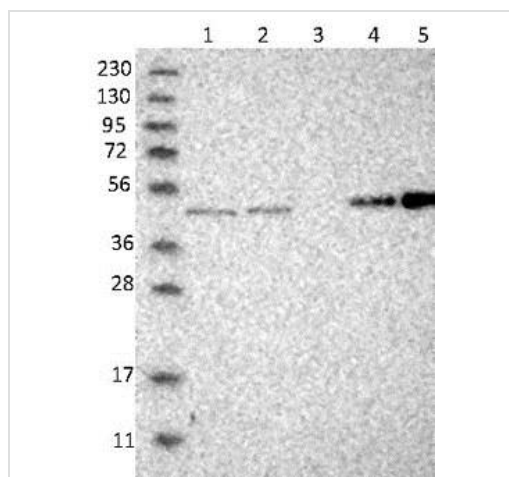
機能	GTPase activating protein that acts on ARF1. Can also activate ARF6 (in vitro). May play a role in clathrin-dependent retrograde transport from early endosomes to the trans-Golgi network.
配列類似性	Contains 1 Arf-GAP domain.
細胞内局在	Cytoplasm. Detected in multiple foci throughout the cytoplasm and in juxtanuclear structures.

画像



Lane 1: NIH-3T3 cell lysate (Mouse embryonic fibroblast cells)

Lane 2: NBT-II cell lysate (Rat Wistar bladder tumour cells)



Western blot - Anti-SMAP2 antibody (ab121675)

All lanes : Anti-SMAP2 antibody (ab121675) at 1/250 dilution

Lane 1 : RT 4 lysate

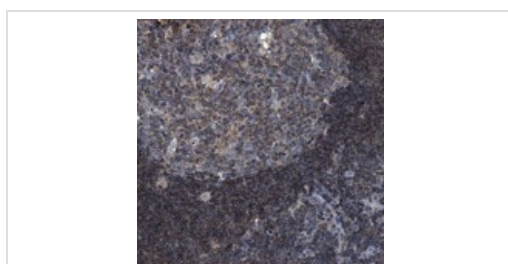
Lane 2 : U 251 MG lysate

Lane 3 : Human plasma lysate

Lane 4 : Human Liver lysate

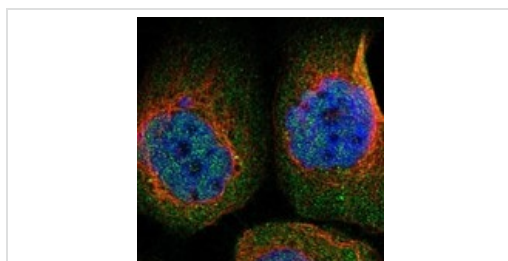
Lane 5 : Human tonsil lysate

Developed using the ECL technique.



Immunohistochemistry (Formalin/PFA-fixed paraffin-embedded sections) - Anti-SMAP2 antibody (ab121675)

ab121675 at 1/300 dilution staining SMAP2 in Paraffin-embedded Human lymph node tissue by Immunohistochemistry.



Immunocytochemistry/ Immunofluorescence - Anti-SMAP2 antibody (ab121675)

ab121675 at 4 µg/ml staining SMAP2 in PFA/Triton X-100 fixed/permeabilized A431 cells by Immunofluorescence (green).

Please note: All products are "FOR RESEARCH USE ONLY. NOT FOR USE IN DIAGNOSTIC PROCEDURES"

Our Abpromise to you: Quality guaranteed and expert technical support

- Replacement or refund for products not performing as stated on the datasheet
- Valid for 12 months from date of delivery
- Response to your inquiry within 24 hours
- We provide support in Chinese, English, French, German, Japanese and Spanish

- Extensive multi-media technical resources to help you
- We investigate all quality concerns to ensure our products perform to the highest standards

If the product does not perform as described on this datasheet, we will offer a refund or replacement. For full details of the Abpromise, please visit <https://www.abcam.co.jp/abpromise> or contact our technical team.

Terms and conditions

- Guarantee only valid for products bought direct from Abcam or one of our authorized distributors