


Anti-Smad2 + Smad3 antibody ab63672

[16 References](#) [画像数 1](#)

製品の概要

製品名	Anti-Smad2 + Smad3 antibody
製品の詳細	Rabbit polyclonal to Smad2 + Smad3
由来種	Rabbit
特異性	ab63672 detects endogenous levels of total Smad2 and Smad3.
アプリケーション	適用あり: WB
種交差性	交差種: Human, African green monkey 交差が予測される動物種: Mouse 
免疫原	Synthetic non-phosphopeptide derived from human Smad2 and Smad3 around the phosphorylation site of threonine 8 (P-F-T ^P -P-P).
特記事項	<p>The Life Science industry has been in the grips of a reproducibility crisis for a number of years. Abcam is leading the way in addressing this with our range of recombinant monoclonal antibodies and knockout edited cell lines for gold-standard validation. Please check that this product meets your needs before purchasing.</p> <p>If you have any questions, special requirements or concerns, please send us an inquiry and/or contact our Support team ahead of purchase. Recommended alternatives for this product can be found below, along with publications, customer reviews and Q&As</p>

製品の特性

製品の状態	Liquid
保存方法	Shipped at 4°C. Store at -20°C. Stable for 12 months at -20°C.
バッファー	pH: 7.40 Preservative: 0.02% Sodium azide Constituents: PBS, 50% Glycerol, 0.87% Sodium chloride
精製度	Without Mg ²⁺ and Ca ²⁺ Immunogen affinity purified
ポリ/モノ	ポリクローナル
アイソタイプ	IgG

アプリケーション

The Abpromise guarantee Abpromise保証は、次のテスト済みアプリケーションにおけるab63672の使用に適用されます
アプリケーションノートには、推奨の開始希釈率がありますが、適切な希釈率につきましてはご検討ください。

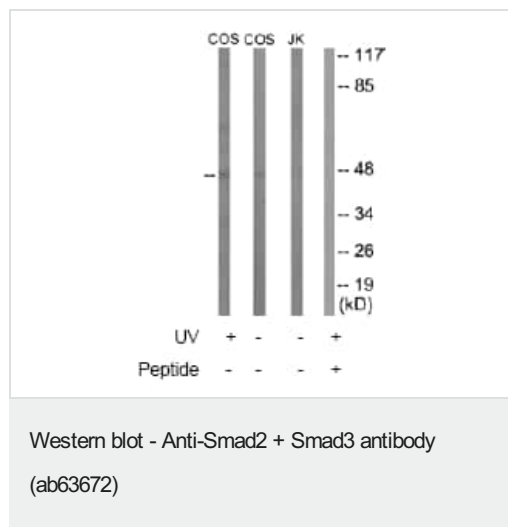
アプリケーション	Abreviews	特記事項
WB		1/500 - 1/1000. Detects a band of approximately 48 kDa.

ターゲット情報

関連性 SMAD is a family of proteins similar to the gene products of the Drosophila gene 'mothers against decapentaplegic' (Mad) and the *C. elegans* gene Sma. SMAD proteins are signal transducers and transcriptional modulators that mediate multiple signaling pathways. They mediate the signal of the transforming growth factor (TGF)-beta, and thus regulate multiple cellular processes, such as cell proliferation, apoptosis, and differentiation.

細胞内局在 Cytoplasm. Nucleus. Note: Cytoplasmic in the absence of ligand. Migrates to the nucleus when complexed with SMAD4.

画像



All lanes : Anti-Smad2 + Smad3 antibody (ab63672) at 1/500 dilution

Lane 1 : COS-7 (African green monkey kidney fibroblast-like cell line) cell extracts treated with UV (15mins)

Lane 2 : COS-7 (African green monkey kidney fibroblast-like cell line) cell extracts untreated

Lane 3 : Jurkat cell extracts treated with EGF (200ng/ml, 30mins)

Lane 4 : Jurkat cell extracts treated with EGF (200ng/ml, 30mins) with immunizing peptide at 10 µg

Lysates/proteins at 30 µg per lane.

Observed band size: 48 kDa

Please note: All products are "FOR RESEARCH USE ONLY. NOT FOR USE IN DIAGNOSTIC PROCEDURES"

Our Abpromise to you: Quality guaranteed and expert technical support

- Replacement or refund for products not performing as stated on the datasheet
- Valid for 12 months from date of delivery
- Response to your inquiry within 24 hours

- We provide support in Chinese, English, French, German, Japanese and Spanish
- Extensive multi-media technical resources to help you
- We investigate all quality concerns to ensure our products perform to the highest standards

If the product does not perform as described on this datasheet, we will offer a refund or replacement. For full details of the Abpromise, please visit <https://www.abcam.co.jp/abpromise> or contact our technical team.

Terms and conditions

- Guarantee only valid for products bought direct from Abcam or one of our authorized distributors