


Anti-SMAD1/5/9 antibody ab80255

★★★★☆ [3 Abreviews](#) [11 References](#) [画像数 1](#)

製品の概要

製品名	Anti-SMAD1/5/9 antibody
製品の詳細	Rabbit polyclonal to SMAD1/5/9
由来種	Rabbit
アプリケーション	適用あり: WB
種交差性	交差種: Human 交差が予測される動物種: Mouse 
免疫原	Synthetic peptide derived from N terminal of human SMAD1/5/9
特記事項	<p>The Life Science industry has been in the grips of a reproducibility crisis for a number of years. Abcam is leading the way in addressing this with our range of recombinant monoclonal antibodies and knockout edited cell lines for gold-standard validation. Please check that this product meets your needs before purchasing.</p> <p>If you have any questions, special requirements or concerns, please send us an inquiry and/or contact our Support team ahead of purchase. Recommended alternatives for this product can be found below, along with publications, customer reviews and Q&As</p>

製品の特性

製品の状態	Liquid
保存方法	Shipped at 4°C. Store at -20°C. Stable for 12 months at -20°C.
バッファー	pH: 7.40 Preservative: 0.02% Sodium azide Constituents: 50% Glycerol, 0.87% Sodium chloride, PBS Without Mg ²⁺ and Ca ²⁺
精製度	Immunogen affinity purified
特記事項 (精製)	ab80255 was affinity-purified from rabbit antiserum by affinity-chromatography using epitope-specific immunogen.
ポリ/モノ	ポリクローナル
アイソタイプ	IgG

アプリケーション

The Abpromise guarantee Abpromise保証は、次のテスト済みアプリケーションにおけるab80255の使用に適用されます
アプリケーションノートには、推奨の開始希釈率がありますが、適切な希釈率につきましてはご検討ください。

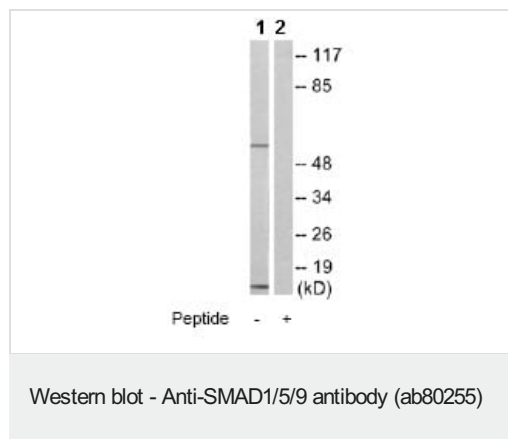
アプリケーション	Abreviews	特記事項
WB	★★★★☆ (2)	1/500 - 1/1000. Detects a band of approximately 52 kDa (predicted molecular weight: 52 kDa).

ターゲット情報

関連性 SMADs are members of the MAD-related family of molecules. MAD-related proteins are a family of intracellular proteins that are essential components in the signaling pathways of the serine/threonine kinase receptors of the transforming growth factor beta superfamily. SMADs can be divided into receptor-regulated SMADs, common-mediator SMAD and inhibitory SMADs. SMAD1, SMAD5 and SMAD9 have high degrees of homology. SMAD8 and SMAD9 are used as alternate names for the same protein. Human SMAD1 is a 465 amino acid protein, human SMAD5 is a 465 amino acid and human SMAD9 is a 430 amino acid protein.

細胞内局在 Cytoplasmic and Nuclear

画像



All lanes : Anti-SMAD1/5/9 antibody (ab80255) at 1/500 dilution

Lane 1 : HeLa cell extracts

Lane 2 : HeLa cell extracts with immunising peptide at 10 µg

Lysates/proteins at 30 µg per lane.

Predicted band size: 52 kDa

Observed band size: 52 kDa

Please note: All products are "FOR RESEARCH USE ONLY. NOT FOR USE IN DIAGNOSTIC PROCEDURES"

Our Abpromise to you: Quality guaranteed and expert technical support

- Replacement or refund for products not performing as stated on the datasheet
- Valid for 12 months from date of delivery
- Response to your inquiry within 24 hours
- We provide support in Chinese, English, French, German, Japanese and Spanish
- Extensive multi-media technical resources to help you
- We investigate all quality concerns to ensure our products perform to the highest standards

If the product does not perform as described on this datasheet, we will offer a refund or replacement. For full details of the Abpromise, please visit <https://www.abcam.co.jp/abpromise> or contact our technical team.

Terms and conditions

- Guarantee only valid for products bought direct from Abcam or one of our authorized distributors