




### Anti-SMAD1/3/5 (phospho S423 + S425) antibody ab51451

★★★★★ [15 Abreviews](#) [52 References](#) [画像数 3](#)

#### 製品の概要

製品名	Anti-SMAD1/3/5 (phospho S423 + S425) antibody
製品の詳細	Rabbit polyclonal to SMAD1/3/5 (phospho S423 + S425)
由来種	Rabbit
特異性	ab51451 is specific for the phosphorylated form of the protein although minimal reactivity with nonphosphorylated human Smad3 can be observed by ELISA and WB. ab51451 also reacts with phosphorylated Smad1 and Smad5 but negligible reactivity is seen against other phosphorylated Smad family members.
アプリケーション	<b>適用あり:</b> IHC-P, WB
種交差性	<b>交差種:</b> Mouse, Human <b>交差が予測される動物種:</b> Rat, Cow, Pig, Xenopus laevis, Zebrafish 
免疫原	Synthetic peptide corresponding to Human SMAD1/3/5 aa 400-500 (phospho S423 + S425). Database link: <a href="#">P84022</a>
	 <a href="#">Run BLAST with</a>  <a href="#">Run BLAST with</a>
ポジティブ・コントロール	WB: HEK293, HeLa, MCF-7, Jurkat, A431, A549, LNCap, MOLT-4, Ramos, Raji, A-172, NIH/3T3 Lysate; MEF lysate; Hep3B lysat.
特記事項	<p>The Life Science industry has been in the grips of a reproducibility crisis for a number of years. Abcam is leading the way in addressing this with our range of recombinant monoclonal antibodies and knockout edited cell lines for gold-standard validation. Please check that this product meets your needs before purchasing.</p> <p>If you have any questions, special requirements or concerns, please send us an inquiry and/or contact our Support team ahead of purchase. Recommended alternatives for this product can be found below, along with publications, customer reviews and Q&amp;As</p>

#### 製品の特性

製品の状態	Liquid
保存方法	Shipped at 4°C. Upon delivery aliquot and store at -20°C or -80°C. Avoid repeated freeze / thaw cycles.
バッファー	Preservative: 0.01% Sodium azide Constituents: 0.33% Potassium phosphate, 0.87% Sodium chloride
精製度	Immunogen affinity purified

## 特記事項 (精製)

ab51451 was affinity purified from monospecific antiserum by immunoaffinity purification. Antiserum was first purified against the phosphorylated form of the immunizing peptide. The resultant affinity purified antibody was then cross adsorbed against the non-phosphorylated form of the immunizing peptide.

## ポリ/モノ

ポリクローナル

## アイソタイプ

IgG

## アプリケーション

### The Abpromise guarantee

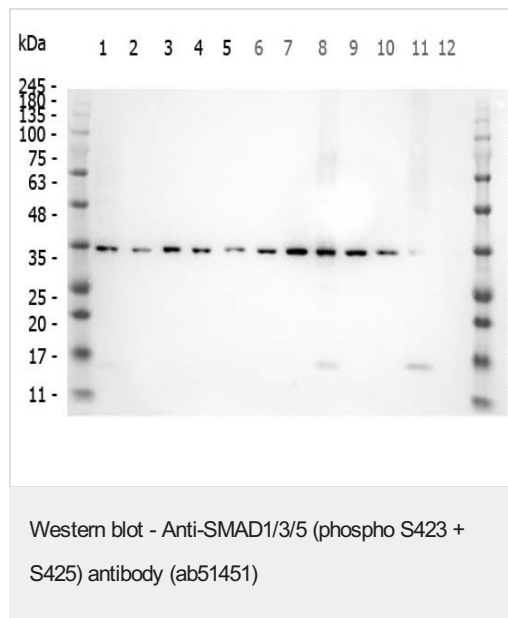
**Abpromise保証は、次のテスト済みアプリケーションにおけるab51451の使用に適用されます**

アプリケーションノートには、推奨の開始希釈率がありますが、適切な希釈率につきましてはご確認ください。

アプリケーション	Abreviews	特記事項
IHC-P	★★★★★ (6)	Use at an assay dependent concentration.
WB	★★★★★ (3)	1/2000 - 1/20000. Predicted molecular weight: 48 kDa. Stimulation with 2 ng/ml TGF-beta for 1 hour is suggested.

## ターゲット情報

## 画像



**All lanes :** Anti-SMAD1/3/5 (phospho S423 + S425) antibody (ab51451) at 1 µg/ml

- Lane 1 :** HEK293 lysate
- Lane 2 :** HeLa Lysate
- Lane 3 :** MCF-7 Lysate
- Lane 4 :** Jurkat Lysate
- Lane 5 :** A431 Lysate
- Lane 6 :** A549 Lysate
- Lane 7 :** LNCap Lysate
- Lane 8 :** MOLT-4 Lysate
- Lane 9 :** Ramos Lysate
- Lane 10 :** Raji Lysate
- Lane 11 :** A-172 Lysate
- Lane 12 :** NIH/3T3 Lysate

Lysates/proteins at 10 µg per lane.

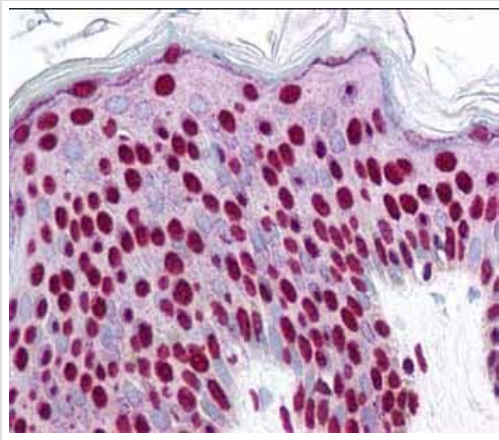
### Secondary

**Lanes 1-2 & 4-12 :** Peroxidase rabbit secondary antibody at

1/30000 dilution

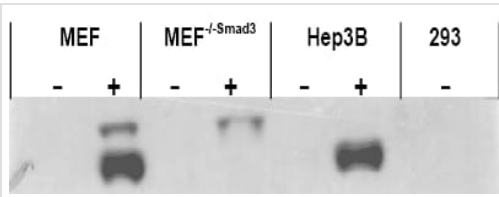
**Lane 3 :** Peroxidase rabbit secondary antibody

**Predicted band size:** 48 kDa



Immunohistochemistry (Formalin/PFA-fixed paraffin-embedded sections) - Anti-SMAD1/3/5 (phospho S423 + S425) antibody (ab51451)

ab51451 at 2.5 µg/ml staining epidermal keratinocytes at 40X. This image shows strong nuclear staining with localization of the antibody as the precipitated red signal and a hematoxylin purple nuclear counterstain.



Western blot - Anti-SMAD1/3/5 (phospho S423 + S425) antibody (ab51451)

**All lanes :** Anti-SMAD1/3/5 (phospho S423 + S425) antibody (ab51451) at 1/2000 dilution

**Lane 1 :** MEF lysate (control)

**Lane 2 :** MEF lysate, after stimulation with 2 ng/ml of TGF-β for 1 hour

**Lane 3 :** MEF<sup>-/-Smad3</sup> lysate (control)

**Lane 4 :** MEF<sup>-/-Smad3</sup> lysate, after stimulation with 2 ng/ml of TGF-β for one hour

**Lane 5 :** Hep3B lysate (control)

**Lane 6 :** Hep3B lysate, after stimulation with 2 ng/ml of TGF-β for one hour

**Lane 7 :** HEK 293 lysate (control)

**Predicted band size:** 48 kDa

Image courtesy of Ying Zhang, NIH, CCR, Bethesda, MD.

**Please note:** All products are "FOR RESEARCH USE ONLY. NOT FOR USE IN DIAGNOSTIC PROCEDURES"

### **Our Abpromise to you: Quality guaranteed and expert technical support**

---

- Replacement or refund for products not performing as stated on the datasheet
- Valid for 12 months from date of delivery
- Response to your inquiry within 24 hours
  
- We provide support in Chinese, English, French, German, Japanese and Spanish
- Extensive multi-media technical resources to help you
- We investigate all quality concerns to ensure our products perform to the highest standards

If the product does not perform as described on this datasheet, we will offer a refund or replacement. For full details of the Abpromise, please visit <https://www.abcam.co.jp/abpromise> or contact our technical team.

### **Terms and conditions**

---

- Guarantee only valid for products bought direct from Abcam or one of our authorized distributors