

Anti-SMAD1 + SMAD5 + SMAD9 (phospho S463 + S465 + S467) antibody [EP728(2)AY] ab76296

リコンビナント RabMAb

★★★★★ [1 Abreviews](#) [5 References](#) [画像数 5](#)

製品の概要

製品名	Anti-SMAD1 + SMAD5 + SMAD9 (phospho S463 + S465 + S467) antibody [EP728(2)AY]
製品の詳細	Rabbit monoclonal [EP728(2)AY] to Smad1 (phospho S463 + S465) + SMAD5 (phospho S463 + S465) + SMAD9 (phospho S465 + S467)
由来種	Rabbit
特異性	Detects SMAD5 phosphorylated at Serine 463 and 465. This antibody may cross-react with Smad1 Phospho (pS463/465) and Smad9 Phospho (pS465/467). <i>Stimulation may be required to allow detection of the phosphorylated protein. Please see images below for recommended treatment conditions and positive controls.</i>
アプリケーション	適用あり: WB 適用なし: Flow Cyt, ICC/IF, IHC-P or IP
種交差性	交差種: Mouse, Rat, Human
免疫原	Synthetic peptide. This information is proprietary to Abcam and/or its suppliers.
ポジティブ・コントロール	HeLa cytoplasmic or nuclear lysate treated with BMP-4
特記事項	This product is a recombinant monoclonal antibody, which offers several advantages including: <ul style="list-style-type: none">- High batch-to-batch consistency and reproducibility- Improved sensitivity and specificity- Long-term security of supply- Animal-free production For more information see here . Our RabMAb [®] technology is a patented hybridoma-based technology for making rabbit monoclonal antibodies. For details on our patents, please refer to RabMAb[®] patents . Mouse, Rat: We have preliminary internal testing data to indicate this antibody may not react with these species. Please contact us for more information.

製品の特性

製品の状態	Liquid
保存方法	Shipped at 4°C. Upon delivery aliquot and store at -20°C. Avoid freeze / thaw cycles.

バッファー	pH: 7.20 Preservative: 0.01% Sodium azide Constituents: 9% PBS, 40% Glycerol (glycerin, glycerine), 0.05% BSA, 50% Tissue culture supernatant
精製度	Tissue culture supernatant
ポリ/モノ	モノクローナル
クローン名	EP728(2)AY
アイソタイプ	IgG

アプリケーション

The Abpromise guarantee **Abpromise保証は、次のテスト済みアプリケーションにおけるab76296の使用に適用されず**
アプリケーションノートには、推奨の開始希釈率がありますが、適切な希釈率につきましてはご検討ください。

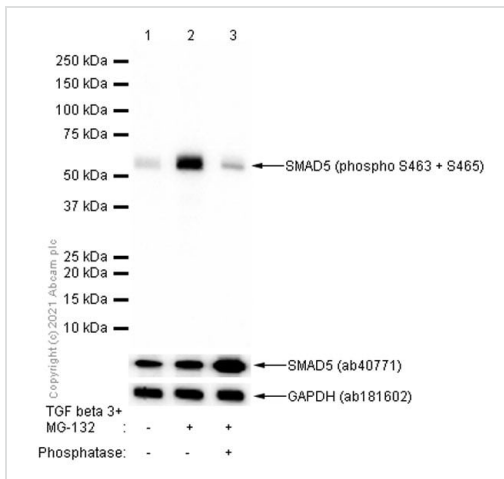
アプリケーション	Abreviews	特記事項
WB	★★★★★ (1)	1/500. Predicted molecular weight: 52 kDa.

追加情報 Is unsuitable for Flow Cyt, ICC/IF, IHC-P or IP.

ターゲット情報

細胞内局在 Smad1: Cytoplasm. Nucleus. Cytoplasmic in the absence of ligand. Migrates to the nucleus when complexed with SMAD4. Co-localizes with LEMD3 at the nucleus inner membrane. SMAD5: Cytoplasm. Nucleus. Cytoplasmic in the absence of ligand. Migrates to the nucleus when complexed with SMAD4. SMAD9: Cytoplasm. Nucleus. In the cytoplasm in the absence of ligand. Migration to the nucleus when complexed with SMAD4.

画像



Western blot - Anti-SMAD1 + SMAD5 + SMAD9 (phospho S463 + S465 + S467) antibody [EP728(2)AY] (ab76296)

All lanes : Anti-SMAD1 + SMAD5 + SMAD9 (phospho S463 + S465 + S467) antibody [EP728(2)AY] (ab76296) at 1/1000 dilution

Lane 1 : Untreated C6 (Rat glial tumor glial cell) whole cell lysate with NFDm/TBST

Lane 2 : C6 treated with 10ng/ml TGF beta 3 and 50µM MG-132 for 30 min whole cell lysate with NFDm/TBST

Lane 3 : C6 treated with 10ng/ml TGF beta 3 and 50µM MG-132 for 30 min whole cell lysate, then the membrane treated with Alkaline Phosphatase for 1 hour with NFDm/TBST

Lysates/proteins at 15 µg per lane.

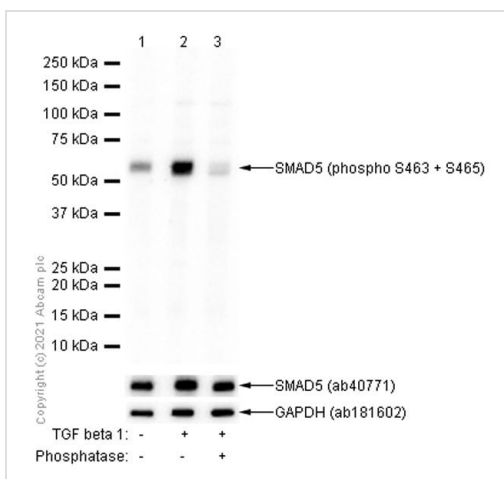
Blocking peptides at 5 % per lane.

Secondary

All lanes : Goat Anti-Rabbit IgG H&L (HRP) ([ab97051](#)) at 1/20000 dilution

Predicted band size: 52 kDa

Exposure time: 7 seconds



Western blot - Anti-SMAD1 + SMAD5 + SMAD9 (phospho S463 + S465 + S467) antibody [EP728(2)AY] (ab76296)

All lanes : Anti-SMAD1 + SMAD5 + SMAD9 (phospho S463 + S465 + S467) antibody [EP728(2)AY] (ab76296) at 1/1000 dilution

Lane 1 : Untreated HeLa (Human cervix adenocarcinoma epithelial cell) whole cell lysate with NFDm/TBST

Lane 2 : HeLa treated with 20ng/ml TGF beta 1 for 15 min whole cell lysate with NFDm/TBST

Lane 3 : HeLa treated with 20ng/ml TGF beta 1 for 15 min whole cell lysate, then the membrane treated with Alkaline Phosphatase for 1 hour with NFDm/TBST

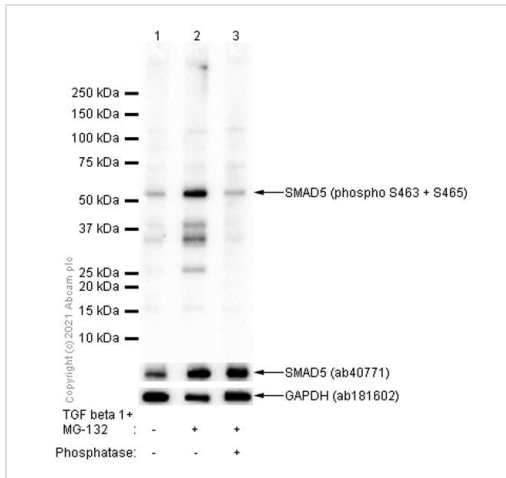
Lysates/proteins at 15 µg per lane.

Blocking peptides at 5 % per lane.

Secondary

All lanes : Goat Anti-Rabbit IgG H&L (HRP) ([ab97051](#)) at 1/20000 dilution

Predicted band size: 52 kDa



Western blot - Anti-SMAD1 + SMAD5 + SMAD9 (phospho S463 + S465 + S467) antibody [EP728(2)AY] (ab76296)

Exposure time: 20 seconds

All lanes : Anti-SRGAP1 antibody (**ab76926**) at 1/1000 dilution

Lane 1 : Untreated NIH/3T3 (Mouse embryonic fibroblast) whole cell lysate

Lane 2 : NIH/3T3 treated with 20ng/ml TGF beta 1 and 50µM MG-132 for 15 min whole cell lysate

Lane 3 : NIH/3T3 treated with 20ng/ml TGF beta 1 and 50µM MG-132 for 15 min whole cell lysate, then the membrane treated with Alkaline Phosphatase for 1 hour

Lysates/proteins at 15 µg per lane.

Secondary

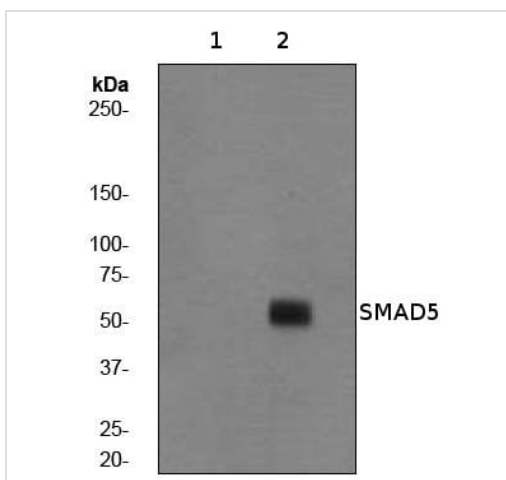
All lanes : Goat Anti-Rabbit IgG, (H+L), Peroxidase conjugated (**ab97051**) at 1/20000 dilution

Predicted band size: 52 kDa

Observed band size: 52 kDa

Exposure time: 100 seconds

Blocking and diluting buffer: 5% NFDM/TBST



Western blot - Anti-SMAD1 + SMAD5 + SMAD9 (phospho S463 + S465 + S467) antibody [EP728(2)AY] (ab76296)

All lanes : Anti-SMAD1 + SMAD5 + SMAD9 (phospho S463 + S465 + S467) antibody [EP728(2)AY] (ab76296) at 1/500 dilution

Lane 1 : HeLa cell lysate - untreated

Lane 2 : HeLa cell lysate - treated with BMP-4

Lysates/proteins at 10 µg per lane.

Secondary

All lanes : goat anti-rabbit HRP at 1/2000 dilution

Predicted band size: 52 kDa

Observed band size: 52 kDa

Why choose a recombinant antibody?



Research with confidence
Consistent and reproducible results



Long-term and scalable supply
Recombinant technology



Success from the first experiment
Confirmed specificity



Ethical standards compliant
Animal-free production

Anti-SMAD1 (phospho S463+465)+ SMAD5
(phospho S463+465)+ SMAD9 (phospho
S465+S467) (ab76296)

Please note: All products are "FOR RESEARCH USE ONLY. NOT FOR USE IN DIAGNOSTIC PROCEDURES"

Our Abpromise to you: Quality guaranteed and expert technical support

- Replacement or refund for products not performing as stated on the datasheet
- Valid for 12 months from date of delivery
- Response to your inquiry within 24 hours
- We provide support in Chinese, English, French, German, Japanese and Spanish
- Extensive multi-media technical resources to help you
- We investigate all quality concerns to ensure our products perform to the highest standards

If the product does not perform as described on this datasheet, we will offer a refund or replacement. For full details of the Abpromise, please visit <https://www.abcam.co.jp/abpromise> or contact our technical team.

Terms and conditions

- Guarantee only valid for products bought direct from Abcam or one of our authorized distributors