

Anti-SMAD 1/5/8/9 antibody ab13723

6 References [画像数 1](#)

製品の概要

製品名	Anti-SMAD 1/5/8/9 antibody
製品の詳細	Rabbit polyclonal to SMAD 1/5/8/9
由来種	Rabbit
特異性	ab13723 may cross-react with SMAD2 or SMAD3. The actual SMADs detected with this antibody may vary according to cell or tissue-type specific expression
アプリケーション	適用あり: WB
種交差性	交差種: Human
免疫原	Synthetic peptide, corresponding to amino acids 18-32 and amino acids 315-329 of Human SMAD1. These sequences are identical in human SMAD5 and SMAD8/9.
ポジティブ・コントロール	A549 whole cell lysate.
特記事項	<p>The Life Science industry has been in the grips of a reproducibility crisis for a number of years. Abcam is leading the way in addressing this with our range of recombinant monoclonal antibodies and knockout edited cell lines for gold-standard validation. Please check that this product meets your needs before purchasing.</p> <p>If you have any questions, special requirements or concerns, please send us an inquiry and/or contact our Support team ahead of purchase. Recommended alternatives for this product can be found below, along with publications, customer reviews and Q&As</p>

製品の特性

製品の状態	Liquid
保存方法	Shipped at 4°C. Store at +4°C short term (1-2 weeks). Upon delivery aliquot. Store at -20°C or -80°C. Avoid freeze / thaw cycle.
バッファー	<p>pH: 7.4</p> <p>Preservative: 0.05% Sodium azide</p> <p>Constituents: PBS, 0.05% BSA</p>
精製度	Protein G purified
ポリ/モノ	ポリクローナル
アイソタイプ	IgG

アプリケーション

The Abpromise guarantee **Abpromise保証は、** 次のテスト済みアプリケーションにおけるab13723の使用に適用されます
アプリケーションノートには、推奨の開始希釈率がありますが、適切な希釈率につきましてはご検討ください。

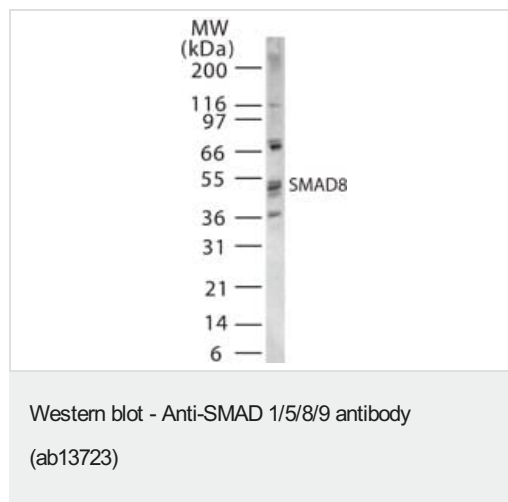
アプリケーション	Abreviews	特記事項
WB		Use a concentration of 0.5 - 2 µg/ml. Detects a band of approximately 51 kDa.

ターゲット情報

関連性 SMADs are members of the MAD-related family of molecules. MAD-related proteins are a family of intracellular proteins that are essential components in the signaling pathways of the serine/threonine kinase receptors of the transforming growth factor beta superfamily. SMADs can be divided into receptor-regulated SMADs, common-mediator SMAD and inhibitory SMADs. SMAD1, SMAD5, SMAD8 and SMAD9 have high degrees of homology. SMAD8 and SMAD9 are used as alternate names for the same protein. Human SMAD1 is a 465 amino acid protein, human SMAD5 is a 465 amino acid and human SMAD9 is a 430 amino acid protein.

細胞内局在 Cytoplasmic

画像



Western blot analysis of SMAD1/5/8/9 in 15 ugs of A549 cell lysate using ab13723 at 0.5 ug/ml.

Western blot analysis of SMAD1/5/8/9 in 15 ugs of A549 cell lysate using ab13723 at 0.5 ug/ml.

Please note: All products are "FOR RESEARCH USE ONLY. NOT FOR USE IN DIAGNOSTIC PROCEDURES"

Our Abpromise to you: Quality guaranteed and expert technical support

- Replacement or refund for products not performing as stated on the datasheet
- Valid for 12 months from date of delivery
- Response to your inquiry within 24 hours
- We provide support in Chinese, English, French, German, Japanese and Spanish
- Extensive multi-media technical resources to help you

- We investigate all quality concerns to ensure our products perform to the highest standards

If the product does not perform as described on this datasheet, we will offer a refund or replacement. For full details of the Abpromise, please visit <https://www.abcam.co.jp/abpromise> or contact our technical team.

Terms and conditions

- Guarantee only valid for products bought direct from Abcam or one of our authorized distributors