




Anti-Sly1 antibody ab86594

画像数 2

製品の概要

製品名	Anti-Sly1 antibody
製品の詳細	Rabbit polyclonal to Sly1
由来種	Rabbit
アプリケーション	適用あり: WB, IP
種交差性	<p>交差種: Mouse, Human</p> <p>交差が予測される動物種: Rat, Rabbit, Horse, Cow, Dog, Pig, Chimpanzee, Ferret, Rhesus monkey, Gorilla, Orangutan, Elephant </p>
免疫原	<p>Synthetic peptide corresponding to Human Sly1 aa 300-350 (internal sequence).</p> <p>Sequence:</p> <p>VENSPAGARPKRKNNKSYDLTPVDKFWQKHKGSPFPEVAESV</p> <p>QQELESYR A</p> <p>Database link: NP_057190.2</p> <p> Run BLAST with  Run BLAST with</p>
ポジティブ・コントロール	Whole cell lysate from HeLa cells, 293T cells or NIH3T3 cells.
特記事項	<p>The Life Science industry has been in the grips of a reproducibility crisis for a number of years. Abcam is leading the way in addressing this with our range of recombinant monoclonal antibodies and knockout edited cell lines for gold-standard validation. Please check that this product meets your needs before purchasing.</p> <p>If you have any questions, special requirements or concerns, please send us an inquiry and/or contact our Support team ahead of purchase. Recommended alternatives for this product can be found below, along with publications, customer reviews and Q&As</p>

製品の特性

製品の状態	Liquid
保存方法	Shipped at 4°C. Upon delivery aliquot and store at -20°C. Avoid freeze / thaw cycles.
バッファー	<p>pH: 6.8</p> <p>Preservative: 0.09% Sodium azide</p> <p>Constituents: 0.1% BSA, Tris buffered saline</p>
精製度	Immunogen affinity purified

ポリモノ
アイソタイプ

ポリクローナル
IgG

アプリケーション

The Abpromise guarantee **Abpromise保証は、** 次のテスト済みアプリケーションにおけるab86594の使用に適用されます
アプリケーションノートには、推奨の開始希釈率がありますが、適切な希釈率につきましてはご検討ください。

アプリケーション	Abreviews	特記事項
WB		1/2000 - 1/10000. Predicted molecular weight: 72 kDa.
IP		Use at 2-5 µg/mg of lysate.

ターゲット情報

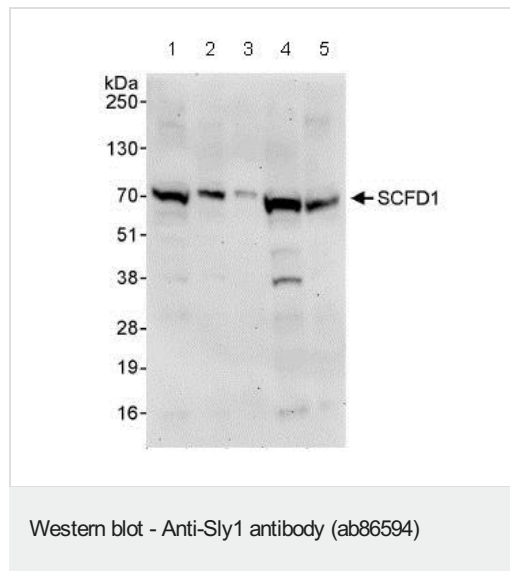
機能 Plays a role in SNARE-pin assembly and Golgi-to-ER retrograde transport via its interaction with COG4. Involved in vesicular transport between the endoplasmic reticulum and the Golgi.

配列類似性 Belongs to the STXBP/unc-18/SEC1 family.

翻訳後修飾 Phosphorylated upon DNA damage, probably by ATM or ATR.

細胞内局在 Cytoplasm. Endoplasmic reticulum membrane. Golgi apparatus > Golgi stack membrane.

画像



Western blot - Anti-Sly1 antibody (ab86594)

All lanes : Anti-Sly1 antibody (ab86594) at 0.04 µg/ml

Lane 1 : Whole cell lysate from HeLa cells at 50 µg

Lane 2 : Whole cell lysate from HeLa cells at 15 µg

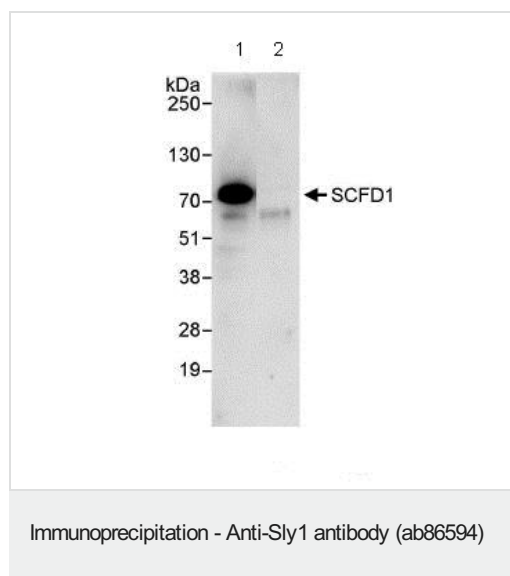
Lane 3 : Whole cell lysate from HeLa cells at 5 µg

Lane 4 : Whole cell lysate from 293T cells at 50 µg

Lane 5 : Whole cell lysate from NIH3T3 cells at 50 µg

Predicted band size: 72 kDa

Exposure time: 3 minutes



1mg whole cell lysate from Hela cells was immunoprecipitated using 3ug ab86594. 20% of IP was loaded per lane, and probed with **ab86549** at 1ug/ml (lane 1) or with a control IgG (lane 2).
Detection: chemiluminescence with an exposure time of 30 seconds.

Please note: All products are "FOR RESEARCH USE ONLY. NOT FOR USE IN DIAGNOSTIC PROCEDURES"

Our Abpromise to you: Quality guaranteed and expert technical support

- Replacement or refund for products not performing as stated on the datasheet
- Valid for 12 months from date of delivery
- Response to your inquiry within 24 hours
- We provide support in Chinese, English, French, German, Japanese and Spanish
- Extensive multi-media technical resources to help you
- We investigate all quality concerns to ensure our products perform to the highest standards

If the product does not perform as described on this datasheet, we will offer a refund or replacement. For full details of the Abpromise, please visit <https://www.abcam.co.jp/abpromise> or contact our technical team.

Terms and conditions

- Guarantee only valid for products bought direct from Abcam or one of our authorized distributors