

Anti-SLURP1 antibody ab93840

1 References [画像数 2](#)

製品の概要

製品名	Anti-SLURP1 antibody
製品の詳細	Rabbit polyclonal to SLURP1
由来種	Rabbit
アプリケーション	適用あり: WB, IHC-P
種交差性	交差種: Human 交差が予測される動物種: Cow, Chimpanzee, Macaque monkey, Gorilla, Orangutan 
免疫原	Synthetic peptide. This information is proprietary to Abcam and/or its suppliers.
ポジティブ・コントロール	This antibody gave a positive signal in WB within Human Skin tissue lysate This antibody gave a positive result in IHC in the following FFPE tissue: Human normal skin.
特記事項	<p>The Life Science industry has been in the grips of a reproducibility crisis for a number of years. Abcam is leading the way in addressing this with our range of recombinant monoclonal antibodies and knockout edited cell lines for gold-standard validation. Please check that this product meets your needs before purchasing.</p> <p>If you have any questions, special requirements or concerns, please send us an inquiry and/or contact our Support team ahead of purchase. Recommended alternatives for this product can be found below, along with publications, customer reviews and Q&As</p>

製品の特性

製品の状態	Liquid
保存方法	Shipped at 4°C. Store at +4°C short term (1-2 weeks). Upon delivery aliquot. Store at -20°C or -80°C. Avoid freeze / thaw cycle.
バッファー	pH: 7.40 Preservative: 0.02% Sodium azide Constituent: PBS Batches of this product that have a concentration < 1mg/ml may have BSA added as a stabilising agent. If you would like information about the formulation of a specific lot, please contact our scientific support team who will be happy to help.
精製度	Immunogen affinity purified
ポリ/モノ	ポリクローナル

アプリケーション

The Abpromise guarantee **Abpromise保証は、次のテスト済みアプリケーションにおけるab93840の使用に適用されます**
 アプリケーションノートには、推奨の開始希釈率がありますが、適切な希釈率につきましてはご検討ください。

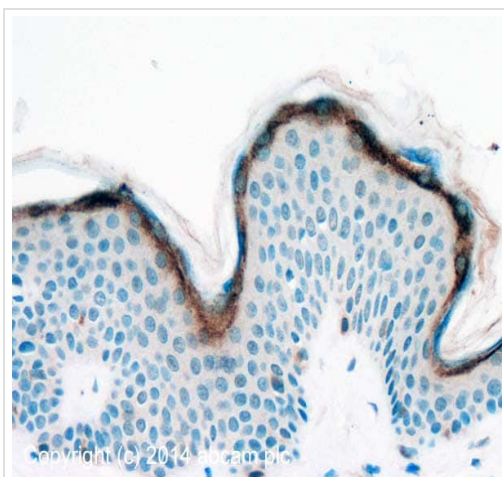
アプリケーション	Abreviews	特記事項
WB		Use a concentration of 1 µg/ml. Detects a band of approximately 9 kDa (predicted molecular weight: 11 kDa).
IHC-P		Use a concentration of 5 µg/ml. Perform heat mediated antigen retrieval with citrate buffer pH 6 before commencing with IHC staining protocol.

ターゲット情報

関連性 SLURP1 (Secreted LY6/PLAUR domain containing 1) belongs to the Ly6/uPAR family but lacks a GPI-anchoring signal sequence. SLURP1 potentiates alpha-7 nicotinic acetylcholine receptors (CHRNA7) in keratinocytes and is implicated in maintaining the physiological and structural integrity of the keratinocyte layers of the skin. It is a marker of late differentiation of the skin and has an antitumor activity. Mutations in the SLURP1 gene are the cause of Mal de Meleda (MDM), a rare autosomal recessive genetic disease, characterized by inflammatory palmoplantar keratoderma.

細胞内局在 Secreted

画像

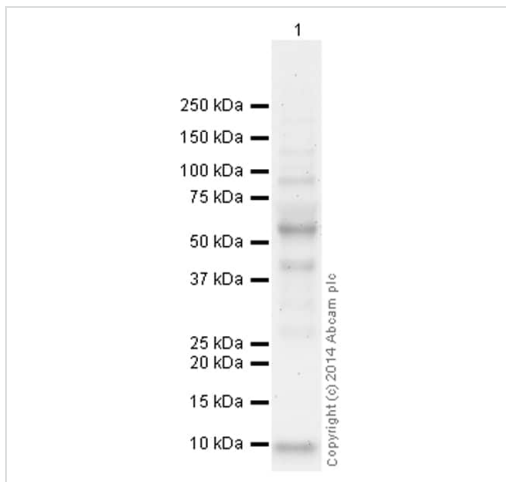


Immunohistochemistry (Formalin/PFA-fixed paraffin-embedded sections) - Anti-SLURP1 antibody (ab93840)

IHC image of SLURP1 staining in Human normal skin formalin fixed paraffin embedded tissue section*, performed on a Leica Bond™ system using the standard protocol F. The section was pre-treated using heat mediated antigen retrieval with sodium citrate buffer (pH6, epitope retrieval solution 1) for 20 mins. The section was then incubated with ab93840, 5µg/ml, for 15 mins at room temperature and detected using an HRP conjugated compact polymer system. DAB was used as the chromogen. The section was then counterstained with haematoxylin and mounted with DPX.

For other IHC staining systems (automated and non-automated) customers should optimize variable parameters such as antigen retrieval conditions, primary antibody concentration and antibody incubation times.

*Tissue obtained from the Human Research Tissue Bank, supported by the NIHR Cambridge Biomedical Research Centre



Western blot - Anti-SLURP1 antibody (ab93840)

Anti-SLURP1 antibody (ab93840) at 1 µg/ml + Human skin tissue lysate - total protein (**ab30166**) at 10 µg

Secondary

Goat Anti-Rabbit IgG H&L (HRP) (**ab97051**) at 1/50000 dilution

Developed using the ECL technique.

Performed under reducing conditions.

Predicted band size: 11 kDa

Observed band size: 9 kDa

Additional bands at: 45 kDa (possible non-specific binding), 58 kDa (possible non-specific binding), 95 kDa (possible non-specific binding)

Exposure time: 8 minutes

The band observed at 9 kDa could potentially be a cleaved form of SLURP1 due to the presence of a 22 amino acid signal peptide.

This blot was produced using a 4-12% Bis-tris gel under the MES buffer system. The gel was run at 200V for 35 minutes before being transferred onto a Nitrocellulose membrane at 30V for 70 minutes. The membrane was then blocked for an hour using 2% Bovine Serum Albumin before being incubated with ab93840 overnight at 4°C. Antibody binding was detected using an anti-rabbit antibody conjugated to HRP, and visualised using ECL development solution **ab133406**

Please note: All products are "FOR RESEARCH USE ONLY. NOT FOR USE IN DIAGNOSTIC PROCEDURES"

Our Abpromise to you: Quality guaranteed and expert technical support

- Replacement or refund for products not performing as stated on the datasheet
- Valid for 12 months from date of delivery
- Response to your inquiry within 24 hours
- We provide support in Chinese, English, French, German, Japanese and Spanish
- Extensive multi-media technical resources to help you
- We investigate all quality concerns to ensure our products perform to the highest standards

If the product does not perform as described on this datasheet, we will offer a refund or replacement. For full details of the Abpromise,

please visit <https://www.abcam.co.jp/abpromise> or contact our technical team.

Terms and conditions

- Guarantee only valid for products bought direct from Abcam or one of our authorized distributors