


Anti-SLUG antibody ab106077

★★★★☆ **4 Abreviews** **23 References** 画像数 **2**

製品の概要

製品名	Anti-SLUG antibody
製品の詳細	Rabbit polyclonal to SLUG
由来種	Rabbit
アプリケーション	適用あり: WB
種交差性	交差種: Human 交差が予測される動物種: Mouse, Chimpanzee, Macaque monkey, Gorilla, Orangutan 
免疫原	Synthetic peptide corresponding to Human SLUG aa 1-100 conjugated to keyhole limpet haemocyanin. (Peptide available as ab133782)
特記事項	<p>This antibody has only been tested on overexpressing cell lysates; we have no data on the detection of the endogenous protein.</p> <p>The Life Science industry has been in the grips of a reproducibility crisis for a number of years. Abcam is leading the way in addressing this with our range of recombinant monoclonal antibodies and knockout edited cell lines for gold-standard validation. Please check that this product meets your needs before purchasing.</p> <p>If you have any questions, special requirements or concerns, please send us an inquiry and/or contact our Support team ahead of purchase. Recommended alternatives for this product can be found below, along with publications, customer reviews and Q&As</p>

製品の特性

製品の状態	Liquid
保存方法	Shipped at 4°C. Store at +4°C short term (1-2 weeks). Upon delivery aliquot. Store at -20°C or -80°C. Avoid freeze / thaw cycle.
バッファー	pH: 7.40 Preservative: 0.02% Sodium azide Constituent: PBS Batches of this product that have a concentration < 1mg/ml may have BSA added as a stabilising agent. If you would like information about the formulation of a specific lot, please contact our scientific support team who will be happy to help.
精製度	Immunogen affinity purified

ポリ/モノ
アイソタイプ

ポリクローナル
IgG

アプリケーション

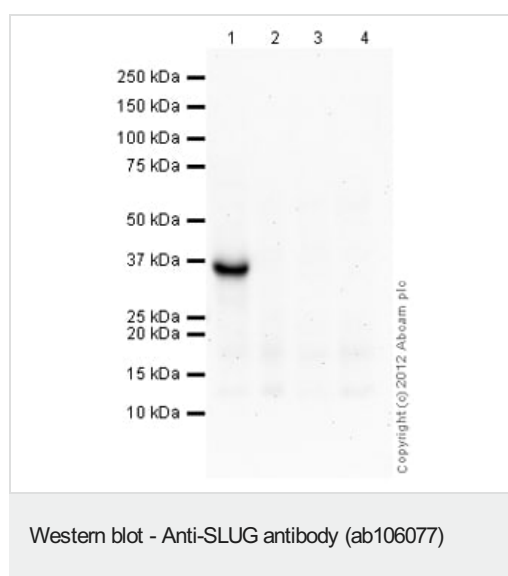
The Abpromise guarantee **Abpromise保証は、** 次のテスト済みアプリケーションにおけるab106077の使用に適用されます
アプリケーションノートには、推奨の開始希釈率がありますが、適切な希釈率につきましてはご確認ください。

アプリケーション	Abreviews	特記事項
WB	★★★★★ (2)	Use a concentration of 1 µg/ml. Detects a band of approximately 36 kDa (predicted molecular weight: 30 kDa).

ターゲット情報

機能	Transcriptional repressor. Involved in the generation and migration of neural crest cells.
組織特異性	Expressed in placenta and adult heart, pancreas, liver, kidney and skeletal muscle.
関連疾患	Defects in SNAI2 are the cause of Waardenburg syndrome type 2D (WS2D) [MIM:608890]. WS2 is a genetically heterogeneous, autosomal dominant disorder characterized by sensorineural deafness, pigmentary disturbances, and absence of dystopia canthorum. The frequency of deafness is higher in WS2 than in WS1.
配列類似性	Belongs to the snail C2H2-type zinc-finger protein family. Contains 5 C2H2-type zinc fingers.
細胞内局在	Nucleus.

画像



All lanes : Anti-SLUG antibody (ab106077) at 1 μ g/ml

Lane 1 : MCF7 cell lysate overexpressing SLUG protein

Lane 2 : MCF7 cell lysate overexpressing SNAIL protein

Lane 3 : MCF7 cell lysate transfected with vector control plasmid

Lane 4 : Untransfected MCF7 cell lysate

Lysates/proteins at 10 µg per lane.

Secondary

All lanes : Goat Anti-Rabbit IgG H&L (HRP) preadsorbed
(**ab97080**) at 1/5000 dilution

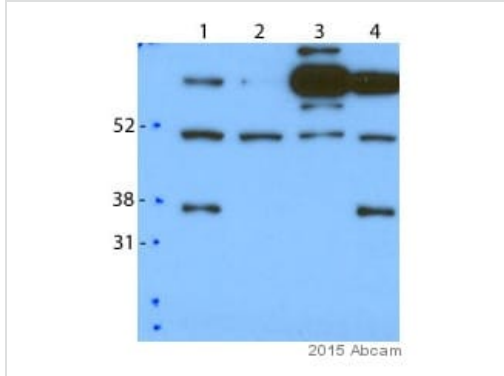
Developed using the ECL technique.

Performed under reducing conditions.

Predicted band size: 30 kDa

Observed band size: 36 kDa

Exposure time: 8 minutes



Western blot - Anti-SLUG antibody (ab106077)

This image is courtesy of an anonymous Abreview

All lanes : Anti-SLUG antibody (ab106077) at 1/2000 dilution

Lane 1 : MDA-MB-231 whole cell lysate

Lane 2 : MDA-MB-231 whole cell lysate - sh Slug 1

Lane 3 : MDA-MB-231 whole cell lysate - sh Slug 2

Lane 4 : MDA-MB-231 whole cell lysate - sh Snail 1

Lysates/proteins at 30 µg per lane.

Secondary

All lanes : HRP-conjugated goat anti-rabbit IgG polyclonal at 1/5000 dilution

Developed using the ECL technique.

Performed under reducing conditions.

Predicted band size: 30 kDa

Observed band size: 35,65 kDa

Additional bands at: 50 kDa (possible non-specific binding)

Exposure time: 30 seconds

Blocked with 5% milk for 1 hour at 22°C.

Primary incubation at 4°C for 18 hours.

Please note: All products are "FOR RESEARCH USE ONLY. NOT FOR USE IN DIAGNOSTIC PROCEDURES"

Our Abpromise to you: Quality guaranteed and expert technical support

- Replacement or refund for products not performing as stated on the datasheet
- Valid for 12 months from date of delivery
- Response to your inquiry within 24 hours
- We provide support in Chinese, English, French, German, Japanese and Spanish

- Extensive multi-media technical resources to help you
- We investigate all quality concerns to ensure our products perform to the highest standards

If the product does not perform as described on this datasheet, we will offer a refund or replacement. For full details of the Abpromise, please visit <https://www.abcam.co.jp/abpromise> or contact our technical team.

Terms and conditions

- Guarantee only valid for products bought direct from Abcam or one of our authorized distributors