

Anti-SLPI antibody - Aminoterminal end ab46763

2 References [画像数 2](#)

製品の概要

製品名	Anti-SLPI antibody - Aminoterminal end
製品の詳細	Rabbit polyclonal to SLPI - Aminoterminal end
由来種	Rabbit
アプリケーション	適用あり: WB
種交差性	交差種: Human
免疫原	Synthetic peptide based on the aminoterminal end of human SLPI.(Please note: the amino acid sequence is proprietary) (Peptide available as ab46833 .)
ポジティブ・コントロール	WB: Recombinant Human SLP I, Wild-type HeLa cell lysate, PC-3 cell lysate, LNCaP cell lysate
特記事項	<p>The Life Science industry has been in the grips of a reproducibility crisis for a number of years. Abcam is leading the way in addressing this with our range of recombinant monoclonal antibodies and knockout edited cell lines for gold-standard validation. Please check that this product meets your needs before purchasing.</p> <p>If you have any questions, special requirements or concerns, please send us an inquiry and/or contact our Support team ahead of purchase. Recommended alternatives for this product can be found below, along with publications, customer reviews and Q&As</p>

製品の特性

製品の状態	Liquid
保存方法	Shipped at 4°C. Upon delivery aliquot and store at -20°C. Avoid freeze / thaw cycles.
バッファー	<p>pH: 7.40</p> <p>Preservative: 0.05% Sodium azide</p> <p>Constituents: PBS, 50% Glycerol, 2.9% Sodium chloride</p>
精製度	Immunogen affinity purified
ポリ/モノ	ポリクローナル
アイソタイプ	IgG

アプリケーション

The Abpromise guarantee

Abpromise保証は、次のテスト済みアプリケーションにおけるab46763の使用に適用されます

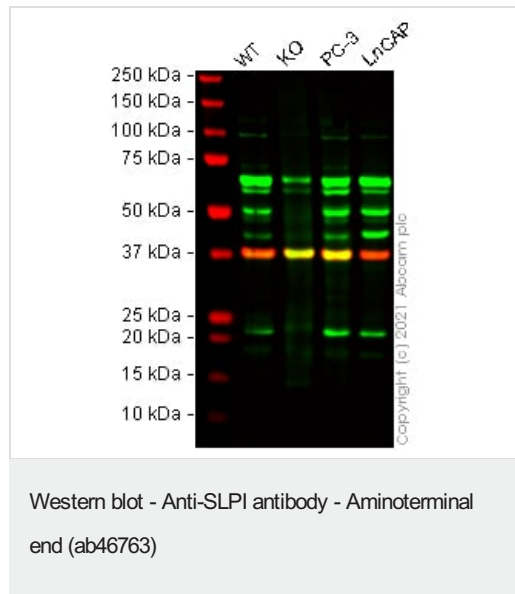
アプリケーションノートには、推奨の開始希釈率がありますが、適切な希釈率につきましてはご確認ください。

アプリケーション	Abreviews	特記事項
WB		1/1000 - 1/5000. Predicted molecular weight: 14 kDa. A recommended starting concentration for Western blots is 1/1000 when using colorimetric substrates such as BCIP/NBT, and 1/5000 for chemiluminescent substrates. Dilution optimised using Chromogenic detection.

ターゲット情報

機能	Acid-stable proteinase inhibitor with strong affinities for trypsin, chymotrypsin, elastase, and cathepsin G. May prevent elastase-mediated damage to oral and possibly other mucosal tissues.
組織特異性	Mucous fluids.
配列類似性	Contains 2 WAP domains.
細胞内局在	Secreted.

画像



All lanes : Anti-SLPI antibody - Aminoterminal end (ab46763) at 1/1000 dilution

- Lane 1** : Wild-type HeLa cell lysate
- Lane 2** : SLPI knockout HeLa cell lysate
- Lane 3** : PC-3 cell lysate
- Lane 4** : LNCaP cell lysate

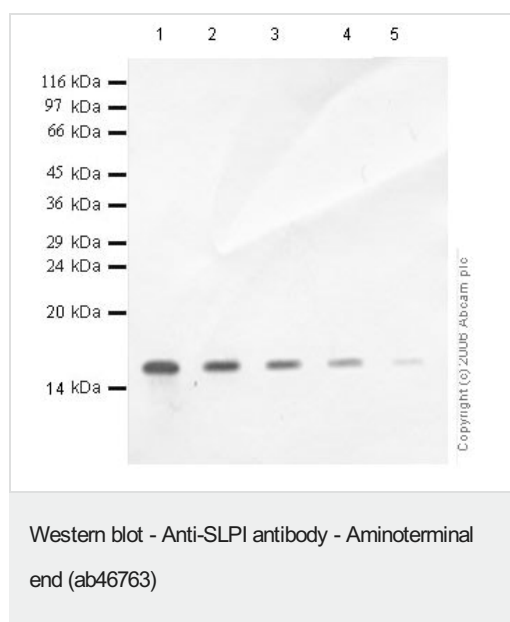
Lysates/proteins at 20 µg per lane.

Performed under reducing conditions.

Predicted band size: 14 kDa
Observed band size: 22 kDa

False colour image of Western blot: Anti-SLPI antibody - Aminoterminal end staining at 1/1000 dilution, shown in green; Mouse anti-GAPDH antibody [6C5] ([ab8245](#)) loading control staining at 1/20000 dilution, shown in red. In Western blot, ab46763 was shown to bind specifically to SLPI. A band was observed at 22 kDa in wild-type HeLa cell lysates with no signal observed at this size in SLPI knockout cell line [ab265215](#) (knockout cell lysate

ab257685). To generate this image, wild-type and SLPI knockout HeLa cell lysates were analysed. First, samples were run on an SDS-PAGE gel then transferred onto a nitrocellulose membrane. Membranes were blocked in fluorescent western blot (TBS-based) blocking solution before incubation with primary antibodies overnight at 4 °C. Blots were washed four times in TBS-T, incubated with secondary antibodies for 1 h at room temperature, washed again four times then imaged. Secondary antibodies used were Goat anti-Rabbit IgG H&L (IRDye®800CW) preabsorbed (**ab216773**) and Goat anti-Mouse IgG H&L (IRDye®680RD) preabsorbed (**ab216776**) at 1/20000 dilution.



All lanes : Anti-SLPI antibody - Aminoterminal end (ab46763) at 1/1000 dilution

Lane 1 : Recombinant Human SLP I at 0.04 µg

Lane 2 : Recombinant Human SLP I at 0.02 µg

Lane 3 : Recombinant Human SLP I at 0.01 µg

Lane 4 : Recombinant Human SLP I at 0.004 µg

Lane 5 : Recombinant Human SLP I at 0.001 µg

Predicted band size: 14 kDa

Observed band size: 15 kDa

Please note: All products are "FOR RESEARCH USE ONLY. NOT FOR USE IN DIAGNOSTIC PROCEDURES"

Our Abpromise to you: Quality guaranteed and expert technical support

- Replacement or refund for products not performing as stated on the datasheet
- Valid for 12 months from date of delivery
- Response to your inquiry within 24 hours
- We provide support in Chinese, English, French, German, Japanese and Spanish
- Extensive multi-media technical resources to help you
- We investigate all quality concerns to ensure our products perform to the highest standards

If the product does not perform as described on this datasheet, we will offer a refund or replacement. For full details of the Abpromise, please visit <https://www.abcam.co.jp/abpromise> or contact our technical team.

Terms and conditions

- Guarantee only valid for products bought direct from Abcam or one of our authorized distributors