

Anti-SLK antibody ab65113

★★★★★ [1 Abreviews](#) [2 References](#) [画像数 3](#)

製品の概要

製品名	Anti-SLK antibody
製品の詳細	Rabbit polyclonal to SLK
由来種	Rabbit
アプリケーション	適用あり: ICC/IF, WB, IHC-P
種交差性	交差種: Human
免疫原	Synthetic peptide. This information is proprietary to Abcam and/or its suppliers.
特記事項	<p>The Life Science industry has been in the grips of a reproducibility crisis for a number of years. Abcam is leading the way in addressing this with our range of recombinant monoclonal antibodies and knockout edited cell lines for gold-standard validation. Please check that this product meets your needs before purchasing.</p> <p>If you have any questions, special requirements or concerns, please send us an inquiry and/or contact our Support team ahead of purchase. Recommended alternatives for this product can be found below, along with publications, customer reviews and Q&As</p>

製品の特性

製品の状態	Liquid
保存方法	Shipped at 4°C. Store at -20°C. Stable for 12 months at -20°C.
バッファー	pH: 7.40 Preservative: 0.02% Sodium azide Constituents: PBS, 50% Glycerol (glycerin, glycerine), 0.87% Sodium chloride
精製度	Without Mg ²⁺ and Ca ²⁺ Immunogen affinity purified
ポリ/モノ	ポリクローナル
アイソタイプ	IgG

アプリケーション

The Abpromise guarantee

Abpromise保証は、次のテスト済みアプリケーションにおけるab65113の使用に適用されます

アプリケーションノートには、推奨の開始希釈率がありますが、適切な希釈率につきましてはご確認ください。

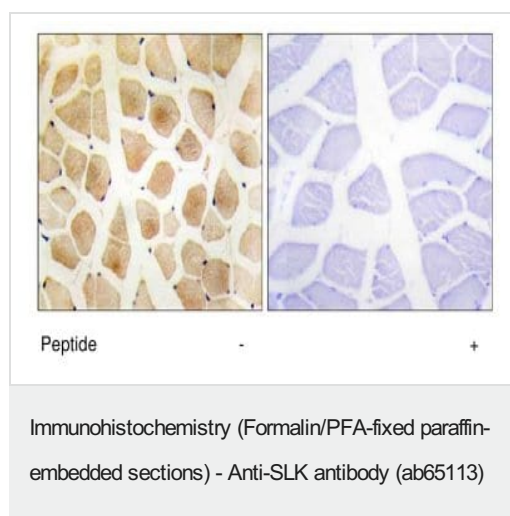
アプリケーション	Abreviews	特記事項
ICC/IF		1/500 - 1/1000.
WB	★★★★★ (1)	1/500 - 1/1000. Detects a band of approximately 143 kDa (predicted molecular weight: 143 kDa).
IHC-P		1/50 - 1/100.

ターゲット情報

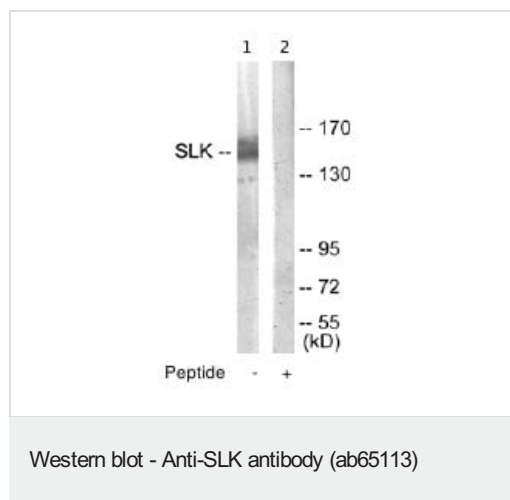
関連性 SLK is a serine/threonine protein kinase that is involved in cytoskeletal reorganization and apoptosis. SLK is a microtubule-associated protein inducing actin stress fiber disassembly, it also mediates apoptosis and it is ubiquitously expressed; highest expression is found in heart and in skeletal muscle. There are two named isoforms.

細胞内局在 Cytoplasmic

画像



This image shows human skeletal muscle tissue stained with ab65113 at 1/50 - 1/100 dilution; with and without the immunising peptide.



All lanes : Anti-SLK antibody (ab65113) at 1/500 dilution

Lane 1 : extracts from COLO205 cells

Lane 2 : extracts from COLO205 cells with immunising peptide

Predicted band size: 143 kDa

Observed band size: 143 kDa

The amount of positive control loading for the WB is 5-30 ug of total

protein. The amount of the peptide for the WB is 5-10 ug.



Immunofluorescence analysis of HepG2 cells, using ab65113 antibody at 1/500-1/1000 dilution

Please note: All products are "FOR RESEARCH USE ONLY. NOT FOR USE IN DIAGNOSTIC PROCEDURES"

Our Abpromise to you: Quality guaranteed and expert technical support

- Replacement or refund for products not performing as stated on the datasheet
- Valid for 12 months from date of delivery
- Response to your inquiry within 24 hours
- We provide support in Chinese, English, French, German, Japanese and Spanish
- Extensive multi-media technical resources to help you
- We investigate all quality concerns to ensure our products perform to the highest standards

If the product does not perform as described on this datasheet, we will offer a refund or replacement. For full details of the Abpromise, please visit <https://www.abcam.co.jp/abpromise> or contact our technical team.

Terms and conditions

- Guarantee only valid for products bought direct from Abcam or one of our authorized distributors