


Anti-SLITRK6 antibody ab67312

1 References [画像数 2](#)

製品の概要

製品名	Anti-SLITRK6 antibody
製品の詳細	Rabbit polyclonal to SLITRK6
由来種	Rabbit
特異性	This antibody is predicted to have no cross-reactivity to other Slitrk proteins.
アプリケーション	適用あり: ICC/IF, WB
種交差性	交差種: Human 交差が予測される動物種: Mouse, Rat 
免疫原	Synthetic peptide corresponding to Human SLITRK6 (C terminal). The immunogen is located within amino acids 720 - 770 (16 amino acid synthetic peptide) of Slitrk6. Database link: Q9H5Y7
ポジティブ・コントロール	SK-N-SH cell lysate.
特記事項	<p>The Life Science industry has been in the grips of a reproducibility crisis for a number of years. Abcam is leading the way in addressing this with our range of recombinant monoclonal antibodies and knockout edited cell lines for gold-standard validation. Please check that this product meets your needs before purchasing.</p> <p>If you have any questions, special requirements or concerns, please send us an inquiry and/or contact our Support team ahead of purchase. Recommended alternatives for this product can be found below, along with publications, customer reviews and Q&As</p>

製品の特性

製品の状態	Liquid
保存方法	Shipped at 4°C. Store at +4°C.
バッファー	pH: 7.2 Preservative: 0.02% Sodium azide Constituent: PBS
精製度	Immunogen affinity purified
ポリ/モノ	ポリクローナル
アイソタイプ	IgG

アプリケーション

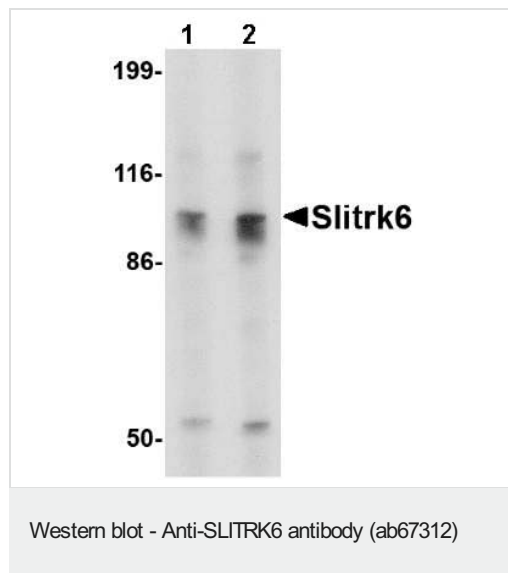
The Abpromise guarantee Abpromise保証は、 次のテスト済みアプリケーションにおけるab67312の使用に適用されます
アプリケーションノートには、推奨の開始希釈率がありますが、適切な希釈率につきましてはご検討ください。

アプリケーション	Abreviews	特記事項
ICC/IF		Use a concentration of 20 µg/ml.
WB		Use a concentration of 0.5 - 1 µg/ml. Detects a band of approximately 95 kDa (predicted molecular weight: 95 kDa).

ターゲット情報

機能	Suppresses neurite outgrowth.
組織特異性	In adult brain, highly expressed in putamen with no expression in cerebral cortex. Expressed in adult and fetal lung and fetal liver. Also expressed at high levels in some brain tumors including medulloblastomas and primitive neuroectodermal tumors.
配列類似性	Belongs to the SLITRK family. Contains 11 LRR (leucine-rich) repeats. Contains 2 LRRCT domains. Contains 2 LRRNT domains.
細胞内局在	Membrane.

画像



Lane 1 : Anti-SLITRK6 antibody (ab67312) at 0.5 µg/ml

Lane 2 : Anti-SLITRK6 antibody (ab67312) at 1 µg/ml

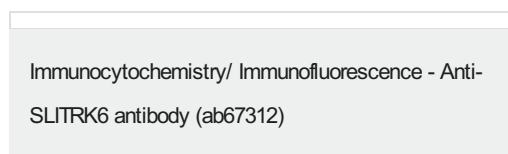
All lanes : SK-N-SH cell lysate

Lysates/proteins at 15 µg per lane.

Predicted band size: 95 kDa

Observed band size: 95 kDa

Additional bands at: 55 kDa. We are unsure as to the identity of these extra bands.



Immunofluorescence of Slitrk6 in Human Brain cells using ab67312 at 20 µg/ml.

Please note: All products are "FOR RESEARCH USE ONLY. NOT FOR USE IN DIAGNOSTIC PROCEDURES"

Our Abpromise to you: Quality guaranteed and expert technical support

- Replacement or refund for products not performing as stated on the datasheet
- Valid for 12 months from date of delivery
- Response to your inquiry within 24 hours

- We provide support in Chinese, English, French, German, Japanese and Spanish
- Extensive multi-media technical resources to help you
- We investigate all quality concerns to ensure our products perform to the highest standards

If the product does not perform as described on this datasheet, we will offer a refund or replacement. For full details of the Abpromise, please visit <https://www.abcam.co.jp/abpromise> or contact our technical team.

Terms and conditions

- Guarantee only valid for products bought direct from Abcam or one of our authorized distributors