


Anti-Slit2 antibody ab7665

★★★★☆ [6 Abreviews](#) [12 References](#) [画像数 1](#)

製品の概要

製品名	Anti-Slit2 antibody
製品の詳細	Rabbit polyclonal to Slit2
由来種	Rabbit
アプリケーション	適用あり: WB, ICC/IF, IHC-Fr
種交差性	交差種: Mouse, Rat, Chicken, Human 交差が予測される動物種: Xenopus laevis 
免疫原	Synthetic peptide: YFIPGTEDYRSKLSGDC conjugated to KLH, corresponding to amino acids 484-500 of Human SLIT2. Run BLAST with Run BLAST with
特記事項	<p>The Life Science industry has been in the grips of a reproducibility crisis for a number of years. Abcam is leading the way in addressing this with our range of recombinant monoclonal antibodies and knockout edited cell lines for gold-standard validation. Please check that this product meets your needs before purchasing.</p> <p>If you have any questions, special requirements or concerns, please send us an inquiry and/or contact our Support team ahead of purchase. Recommended alternatives for this product can be found below, along with publications, customer reviews and Q&As</p>

製品の特性

製品の状態	Liquid
保存方法	Shipped at 4°C. Upon delivery aliquot and store at -20°C or -80°C. Avoid repeated freeze / thaw cycles.
バッファー	Preservative: 0.01% Sodium azide Constituents: 0.42% Potassium phosphate, 0.87% Sodium chloride
精製度	Immunogen affinity purified
ポリ/モノ	ポリクローナル
アイソタイプ	IgG

アプリケーション

The Abpromise guarantee

Abpromise保証は、次のテスト済みアプリケーションにおけるab7665の使用に適用されます

アプリケーションノートには、推奨の開始希釈率がありますが、適切な希釈率につきましてはご検討ください。

アプリケーション	Abreviews	特記事項
WB		1/500 - 1/2000. Detects a band of approximately 165 kDa (predicted molecular weight: 170 kDa). Incubate primary antibody blocking buffer (5% goat serum + 0.5% non-fat dry milk in PBS) other blocking buffers cause a poor signal.
ICC/IF	★★★★☆ (4)	Use at an assay dependent concentration.
IHC-Fr		Use at an assay dependent concentration. PubMed: 20498081

ターゲット情報

機能

Thought to act as molecular guidance cue in cellular migration, and function appears to be mediated by interaction with roundabout homolog receptors. During neural development involved in axonal navigation at the ventral midline of the neural tube and projection of axons to different regions. SLIT1 and SLIT2 seem to be essential for midline guidance in the forebrain by acting as repulsive signal preventing inappropriate midline crossing by axons projecting from the olfactory bulb. In spinal chord development may play a role in guiding commissural axons once they reached the floor plate by modulating the response to netrin. In vitro, silences the attractive effect of NTN1 but not its growth-stimulatory effect and silencing requires the formation of a ROBO1-DCC complex. May be implicated in spinal chord midline post-crossing axon repulsion. In vitro, only commissural axons that crossed the midline responded to SLIT2. In the developing visual system appears to function as repellent for retinal ganglion axons by providing a repulsion that directs these axons along their appropriate paths prior to, and after passage through, the optic chiasm. In vitro, collapses and repels retinal ganglion cell growth cones. Seems to play a role in branching and arborization of CNS sensory axons, and in neuronal cell migration. In vitro, Slit homolog 2 protein N-product, but not Slit homolog 2 protein C-product, repels olfactory bulb (OB) but not dorsal root ganglia (DRG) axons, induces OB growth cones collapse and induces branching of DRG axons. Seems to be involved in regulating leukocyte migration.

組織特異性

Fetal lung and kidney, and adult spinal cord. Weak expression in adult adrenal gland, thyroid, trachea and other tissues examined.

配列類似性

Contains 1 CTCK (C-terminal cystine knot-like) domain.
Contains 7 EGF-like domains.
Contains 1 laminin G-like domain.
Contains 20 LRR (leucine-rich) repeats.
Contains 4 LRRCT domains.
Contains 4 LRRNT domains.

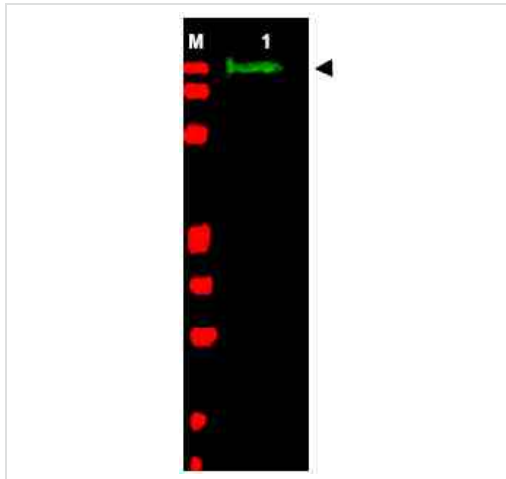
ドメイン

The leucine-rich repeat domain is sufficient for guiding both axon projection and neuronal migration, in vitro.

細胞内局在

Secreted. The C-terminal cleavage protein is more diffusible than the larger N-terminal protein that is more tightly cell associated.

画像



Western blot - Anti-Slit2 antibody (ab7665)

Anti-Slit2 antibody (ab7665) at 1/1350 dilution + Chicken spinal cord whole cell lysate at 30 µg

Secondary

IRDye™800

conjugated Goat anti-Rabbit IgG [H&L] at 1/10000 dilution

Predicted band size: 170 kDa

Observed band size: 165 kDa

Molecular weight estimation was made by comparison to prestained molecular weight markers

Please note: All products are "FOR RESEARCH USE ONLY. NOT FOR USE IN DIAGNOSTIC PROCEDURES"

Our Abpromise to you: Quality guaranteed and expert technical support

- Replacement or refund for products not performing as stated on the datasheet
- Valid for 12 months from date of delivery
- Response to your inquiry within 24 hours
- We provide support in Chinese, English, French, German, Japanese and Spanish
- Extensive multi-media technical resources to help you
- We investigate all quality concerns to ensure our products perform to the highest standards

If the product does not perform as described on this datasheet, we will offer a refund or replacement. For full details of the Abpromise, please visit <https://www.abcam.co.jp/abpromise> or contact our technical team.

Terms and conditions

- Guarantee only valid for products bought direct from Abcam or one of our authorized distributors