

# Anti-SLFN5 antibody ab121537

**3 References** [画像数 5](#)

### 製品の概要

---

製品名	Anti-SLFN5 antibody
製品の詳細	Rabbit polyclonal to SLFN5
由来種	Rabbit
アプリケーション	<b>適用あり:</b> ICC/IF, IHC-P, WB
種交差性	<b>交差種:</b> Human
免疫原	antigen sequence, corresponding to internal sequence amino acids 70-210 of Human SLFN5.
ポジティブ・コントロール	ICC/IF: A-431 human cell line IHC: Human lymph node, Fallopian tube and endometrium tissue Wb: SK-MEL-30 and Caco-2 cell lines
特記事項	<p>The Life Science industry has been in the grips of a reproducibility crisis for a number of years. Abcam is leading the way in addressing this with our range of recombinant monoclonal antibodies and knockout edited cell lines for gold-standard validation. Please check that this product meets your needs before purchasing.</p> <p>If you have any questions, special requirements or concerns, please send us an inquiry and/or contact our Support team ahead of purchase. Recommended alternatives for this product can be found below, along with publications, customer reviews and Q&amp;As</p>

### 製品の特性

---

製品の状態	Liquid
保存方法	Shipped at 4°C. Upon delivery aliquot and store at -20°C. Avoid freeze / thaw cycles.
バッファー	pH: 7.20 Preservative: 0.02% Sodium azide Constituents: 59% PBS, 40% Glycerol (glycerin, glycerine)
精製度	Immunogen affinity purified
ポリ/モノ	ポリクローナル
アイソタイプ	IgG

### アプリケーション

---

The Abpromise guarantee

**Abpromise保証は、次のテスト済みアプリケーションにおけるab121537の使用に適用されます**

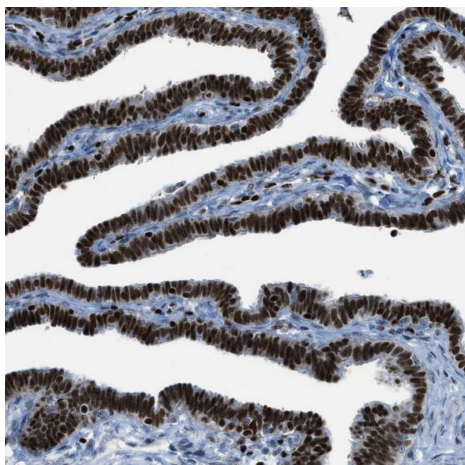
アプリケーションノートには、推奨の開始希釈率がありますが、適切な希釈率につきましてはご確認ください。

アプリケーション	Abreviews	特記事項
ICC/IF		Use a concentration of 0.25 - 2 µg/ml.
IHC-P		1/500 - 1/1000. Perform heat mediated antigen retrieval with citrate buffer pH 6 before commencing with IHC staining protocol.
WB		Use a concentration of 0.04 - 0.4 µg/ml.

## ターゲット情報

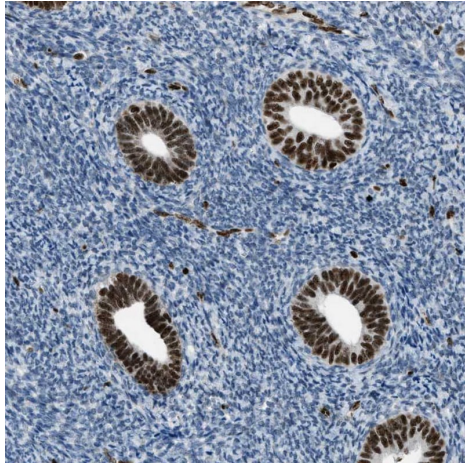
機能	May have a role in hematopoeitic cell differentiation.
配列類似性	Belongs to the Schlafen family.

## 画像



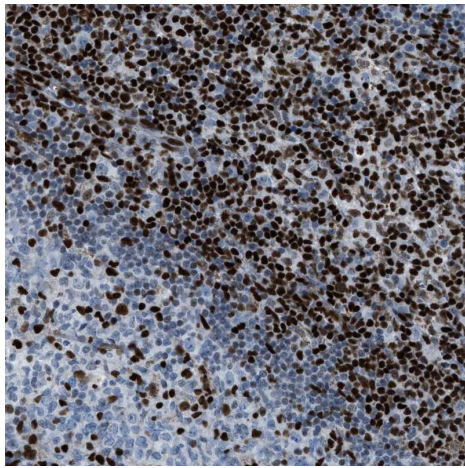
ab121537 at 1/725 dilution staining SLFN5 in paraffin-embedded Human fallopian tube by Immunohistochemistry.

Immunohistochemistry (Formalin/PFA-fixed paraffin-embedded sections) - Anti-SLFN5 antibody (ab121537)



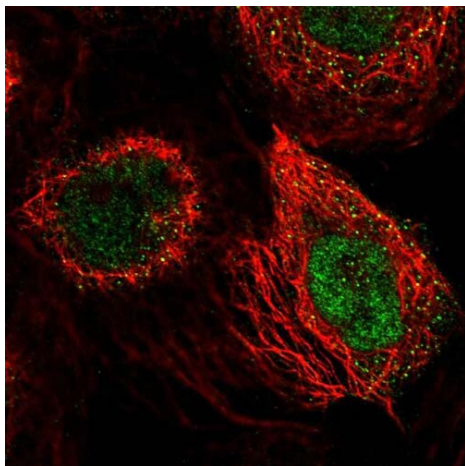
Immunohistochemistry (Formalin/PFA-fixed paraffin-embedded sections) - Anti-SLFN5 antibody (ab121537)

ab121537 at 1/725 dilution staining SLFN5 in paraffin-embedded Human endometrium by Immunohistochemistry.



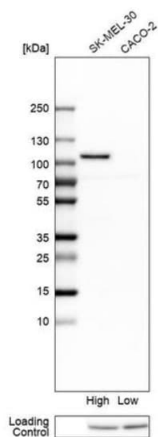
Immunohistochemistry (Formalin/PFA-fixed paraffin-embedded sections) - Anti-SLFN5 antibody (ab121537)

ab121537 at 1/725 dilution staining SLFN5 in paraffin-embedded Human lymph node by Immunohistochemistry.



Immunofluorescent staining of Human cell line A-431 shows positivity in nuclei but not nucleoli. Recommended concentration of ab121537 1-4 µg/ml. Cells treated with PFA/Triton X-100.

Immunocytochemistry/ Immunofluorescence - Anti-SLFN5 antibody (ab121537)



**All lanes** : Anti-SLFN5 antibody (ab121537) at 0.4 µg/ml

**Lane 1** : SK-MEL-30 cell lysate

**Lane 2** : Caco-2 cell lysate

Loading control: Anti-HDAC1

Western blot - Anti-SLFN5 antibody (ab121537)

**Please note:** All products are "FOR RESEARCH USE ONLY. NOT FOR USE IN DIAGNOSTIC PROCEDURES"

### Our Abpromise to you: Quality guaranteed and expert technical support

- Replacement or refund for products not performing as stated on the datasheet
- Valid for 12 months from date of delivery
- Response to your inquiry within 24 hours
- We provide support in Chinese, English, French, German, Japanese and Spanish
- Extensive multi-media technical resources to help you
- We investigate all quality concerns to ensure our products perform to the highest standards

If the product does not perform as described on this datasheet, we will offer a refund or replacement. For full details of the Abpromise, please visit <https://www.abcam.co.jp/abpromise> or contact our technical team.

## Terms and conditions

---

- Guarantee only valid for products bought direct from Abcam or one of our authorized distributors