


### Anti-SLD5 antibody ab101346

★☆☆☆☆ 1 Abreviews 3 References 両俵数 4

**医薬用外劇物**

#### 製品の概要

製品名	Anti-SLD5 antibody
製品の詳細	Rabbit polyclonal to SLD5
由来種	Rabbit
アプリケーション	<b>適用あり:</b> WB, ICC/IF, IHC-P
種交差性	<b>交差種:</b> Mouse, Human <b>交差が予測される動物種:</b> Rat, Cow 
免疫原	Recombinant fragment, corresponding to amino acids 1-198 of Human SLD5
ポジティブ・コントロール	293T, A431, Jurkat cell lines
特記事項	<p>The Life Science industry has been in the grips of a reproducibility crisis for a number of years. Abcam is leading the way in addressing this with our range of recombinant monoclonal antibodies and knockout edited cell lines for gold-standard validation. Please check that this product meets your needs before purchasing.</p> <p>If you have any questions, special requirements or concerns, please send us an inquiry and/or contact our Support team ahead of purchase. Recommended alternatives for this product can be found below, along with publications, customer reviews and Q&amp;As</p>

#### 製品の特性

製品の状態	Liquid
保存方法	Shipped at 4°C. Upon delivery aliquot and store at -20°C. Avoid repeated freeze / thaw cycles.
バッファー	pH: 7.00 Preservative: 0.01% Thimerosal (merthiolate) Constituents: 1.21% Tris, 0.75% Glycine, 20% Glycerol (glycerin, glycerine)
精製度	Immunogen affinity purified
ポリ/モノ	ポリクローナル
アイソタイプ	IgG

#### アプリケーション

## The Abpromise guarantee

**Abpromise保証は、次のテスト済みアプリケーションにおけるab101346の使用に適用されます**

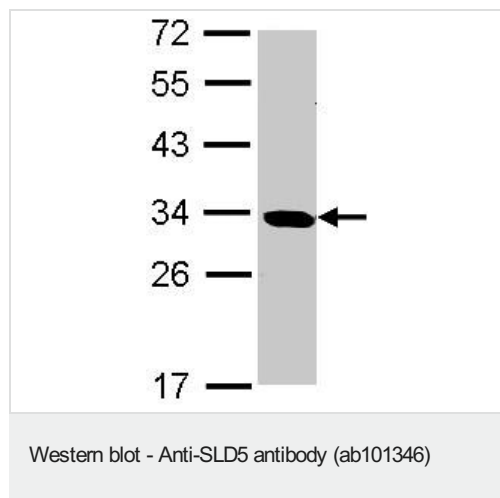
アプリケーションノートには、推奨の開始希釈率がありますが、適切な希釈率につきましてはご確認ください。

アプリケーション	Abreviews	特記事項
WB		1/1000 - 1/10000. Predicted molecular weight: 26 kDa.
ICC/IF	★☆☆☆☆ (1)	1/100 - 1/500.
IHC-P		1/100 - 1/500. Suggested antigen retrieval using heat mediated 10mM Citrate buffer (pH 6.0) or Tris-EDTA buffer (pH 8.0).

## ターゲット情報

機能	The GINS complex plays an essential role in the initiation of DNA replication, and progression of DNA replication forks. GINS4 is important for GINS complex assembly. GINS complex seems to bind preferentially to single-stranded DNA.
配列類似性	Belongs to the GINS4/SLD5 family.
細胞内局在	Cytoplasm. Nucleus.

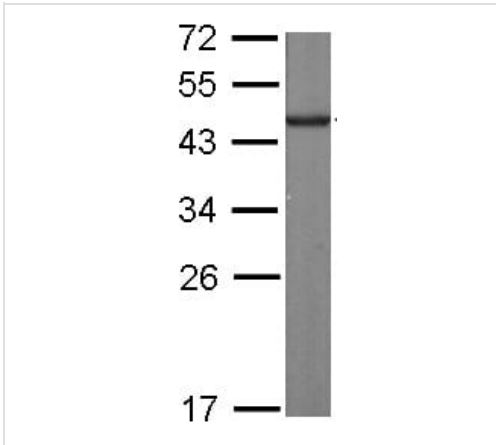
## 画像



Anti-SLD5 antibody (ab101346) at 1/1000 dilution + 293T whole cell lysate at 30 µg

**Predicted band size:** 26 kDa

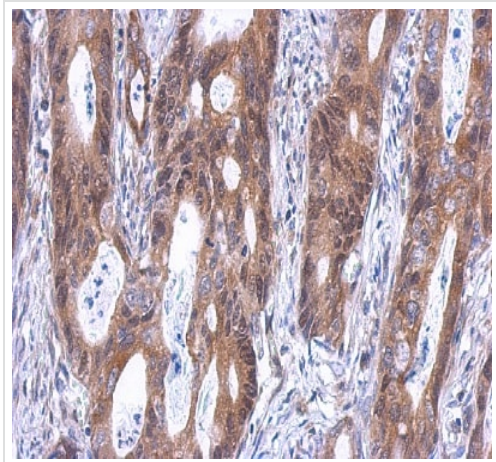
12% SDS PAGE



Anti-SLD5 antibody (ab101346) at 1/10000 dilution + Mouse heart  
at 50  $\mu$ g

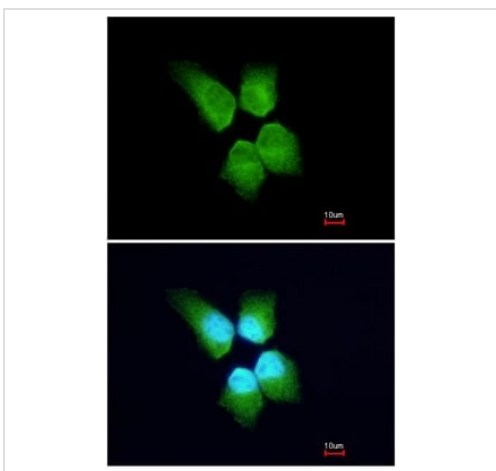
**Predicted band size:** 26 kDa

Western blot - Anti-SLD5 antibody (ab101346)



ab101346 at 1/500 staining SLD5 in paraffin-embedded  
human gastric cancer.

Immunohistochemistry (Formalin/PFA-fixed paraffin-  
embedded sections) - Anti-SLD5 antibody  
(ab101346)



ab101346 at 1/200 staining paraformaldehyde-fixed A431 in IF.  
Bottom image costained with Hoechst 33342.

Immunocytochemistry/ Immunofluorescence - Anti-  
SLD5 antibody (ab101346)

**Please note:** All products are "FOR RESEARCH USE ONLY. NOT FOR USE IN DIAGNOSTIC PROCEDURES"

## **Our Abpromise to you: Quality guaranteed and expert technical support**

---

- Replacement or refund for products not performing as stated on the datasheet
- Valid for 12 months from date of delivery
- Response to your inquiry within 24 hours
  
- We provide support in Chinese, English, French, German, Japanese and Spanish
- Extensive multi-media technical resources to help you
- We investigate all quality concerns to ensure our products perform to the highest standards

If the product does not perform as described on this datasheet, we will offer a refund or replacement. For full details of the Abpromise, please visit <https://www.abcam.co.jp/abpromise> or contact our technical team.

## **Terms and conditions**

---

- Guarantee only valid for products bought direct from Abcam or one of our authorized distributors