


Anti-SLC4A8/NBC antibody ab125910

面格新 1

医薬用外劇物

製品の概要

製品名	Anti-SLC4A8/NBC antibody
製品の詳細	Rabbit polyclonal to SLC4A8/NBC
由来種	Rabbit
アプリケーション	適用あり: WB
種交差性	交差種: Human 交差が予測される動物種: Mouse, Rat 
免疫原	Recombinant fragment within Human SLC4A8/NBC aa 1-255. The exact sequence is proprietary.
ポジティブ・コントロール	IMR32 and U87-MG whole cell lysates.
特記事項	<p>The Life Science industry has been in the grips of a reproducibility crisis for a number of years. Abcam is leading the way in addressing this with our range of recombinant monoclonal antibodies and knockout edited cell lines for gold-standard validation. Please check that this product meets your needs before purchasing.</p> <p>If you have any questions, special requirements or concerns, please send us an inquiry and/or contact our Support team ahead of purchase. Recommended alternatives for this product can be found below, along with publications, customer reviews and Q&As</p>

製品の特性

製品の状態	Liquid
保存方法	Shipped at 4°C. Upon delivery aliquot and store at -20°C or -80°C. Avoid repeated freeze / thaw cycles.
バッファー	pH: 7.00 Preservative: 0.01% Thimerosal (merthiolate) Constituents: 1.21% Tris, 0.75% Glycine, 20% Glycerol (glycerin, glycerine)
精製度	Immunogen affinity purified
ポリ/モノ	ポリクローナル
アイソタイプ	IgG

アプリケーション

The Abpromise guarantee

Abpromise保証は、次のテスト済みアプリケーションにおけるab125910の使用に適用されます

アプリケーションノートには、推奨の開始希釈率がありますが、適切な希釈率につきましてはご確認ください。

アプリケーション	Abreviews	特記事項
WB		1/500 - 1/3000. Predicted molecular weight: 117 kDa.

ターゲット情報

機能

Mediates electroneutral sodium- and carbonate-dependent chloride-HCO₃⁻ exchange with a Na⁺:HCO₃⁻ stoichiometry of 2:1. Plays a major role in pH regulation in neurons. May be involved in cell pH regulation by transporting HCO₃⁻ from blood to cell. Enhanced expression in severe acid stress could be important for cell survival by mediating the influx of HCO₃⁻ into the cells. Also mediates lithium-dependent HCO₃⁻ cotransport. May be regulated by osmolarity.

組織特異性

Expressed in the pyramidal cells of the hippocampus (at protein level). Highly expressed in all major regions of the brain, spinal column and in testis, and moderate levels in trachea, thyroid and medulla region of kidney. Low expression levels observed in pancreas and kidney cortex.

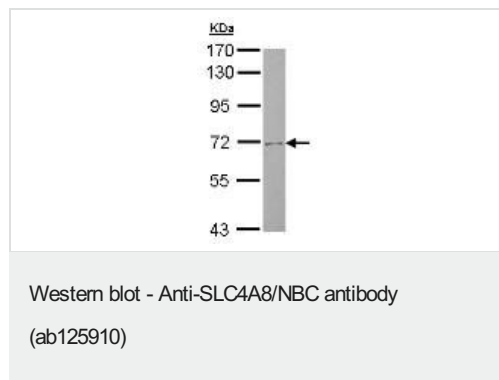
配列類似性

Belongs to the anion exchanger (TC 2.A.31) family.

細胞内局在

Membrane.

画像



Anti-SLC4A8/NBC antibody (ab125910) at 1/1000 dilution + Human U87-M6 whole cell lysate at 30 µg

Predicted band size: 117 kDa

Gel concentration: 7.5%

Please note: All products are "FOR RESEARCH USE ONLY. NOT FOR USE IN DIAGNOSTIC PROCEDURES"

Our Abpromise to you: Quality guaranteed and expert technical support

- Replacement or refund for products not performing as stated on the datasheet
- Valid for 12 months from date of delivery
- Response to your inquiry within 24 hours
- We provide support in Chinese, English, French, German, Japanese and Spanish
- Extensive multi-media technical resources to help you
- We investigate all quality concerns to ensure our products perform to the highest standards

If the product does not perform as described on this datasheet, we will offer a refund or replacement. For full details of the Abpromise, please visit <https://www.abcam.co.jp/abpromise> or contact our technical team.

Terms and conditions

- Guarantee only valid for products bought direct from Abcam or one of our authorized distributors