


Anti-SLC16A3/MCT 4 antibody ab74109

★★★★★ [2 Abreviews](#) [10 References](#) [画像数 1](#)

製品の概要

製品名	Anti-SLC16A3/MCT 4 antibody
製品の詳細	Rabbit polyclonal to SLC16A3/MCT 4
由来種	Rabbit
アプリケーション	適用あり: WB
種交差性	交差種: Human 交差が予測される動物種: Mouse, Rat 
免疫原	Synthetic peptide. This information is proprietary to Abcam and/or its suppliers.
ポジティブ・コントロール	Extracts from LOVO cells
特記事項	<p>The Life Science industry has been in the grips of a reproducibility crisis for a number of years. Abcam is leading the way in addressing this with our range of recombinant monoclonal antibodies and knockout edited cell lines for gold-standard validation. Please check that this product meets your needs before purchasing.</p> <p>If you have any questions, special requirements or concerns, please send us an inquiry and/or contact our Support team ahead of purchase. Recommended alternatives for this product can be found below, along with publications, customer reviews and Q&As</p>

製品の特性

製品の状態	Liquid
保存方法	Shipped at 4°C. Upon delivery aliquot and store at -20°C. Avoid freeze / thaw cycles.
バッファー	pH: 7.40 Preservative: 0.02% Sodium azide Constituents: 50% Glycerol, 0.87% Sodium chloride, PBS
精製度	Immunogen affinity purified
特記事項(精製)	The antibody was affinity purified from rabbit antiserum by affinity chromatography using epitope specific immunogen.
ポリ/モノ	ポリクローナル
アイソタイプ	IgG

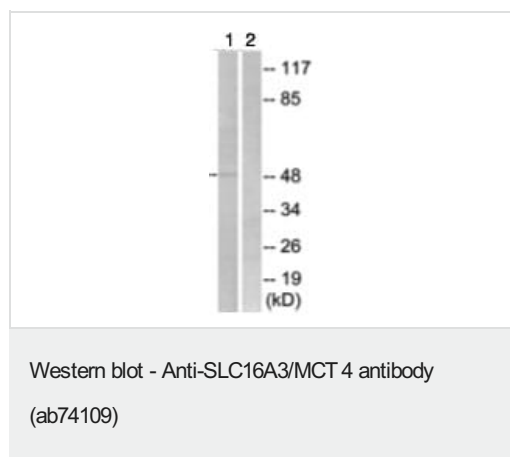
The Abpromise guarantee **Abpromise保証は、** 次のテスト済みアプリケーションにおけるab74109の使用に適用されます
アプリケーションノートには、推奨の開始希釈率がありますが、適切な希釈率につきましてはご検討ください。

アプリケーション	Abreviews	特記事項
WB	★★★★★ (2)	1/500 - 1/1000. Predicted molecular weight: 49 kDa.

ターゲット情報

機能	Proton-linked monocarboxylate transporter. Catalyzes the rapid transport across the plasma membrane of many monocarboxylates such as lactate, pyruvate, branched-chain oxo acids derived from leucine, valine and isoleucine, and the ketone bodies acetoacetate, beta-hydroxybutyrate and acetate.
組織特異性	Highly expressed in skeletal muscle.
配列類似性	Belongs to the major facilitator superfamily. Monocarboxylate porter (TC 2.A.1.13) family.
細胞内局在	Cell membrane.
製品の状態	Lactic acid and pyruvate transport across plasma membranes is catalyzed by members of the proton linked monocarboxylate transporter (MCT) family, which has been designated solute carrier family 16. Each MCT appears to have slightly different substrate and inhibitor specificities and transport kinetics, which are related to the metabolic requirements of the tissues in which it is found. The MCTs, which include MCT1 and MCT2, are characterized by 12 predicted transmembrane domains.

画像



All lanes : Anti-SLC16A3/MCT 4 antibody (ab74109) at 1/500 dilution

Lane 1 : extracts from LOVO cells

Lane 2 : extracts from LOVO cells with immunizing peptide at 5 µg

Lysates/proteins at 10 µg per lane.

Predicted band size: 49 kDa

Observed band size: 49 kDa

Please note: All products are "FOR RESEARCH USE ONLY. NOT FOR USE IN DIAGNOSTIC PROCEDURES"

Our Abpromise to you: Quality guaranteed and expert technical support

- Replacement or refund for products not performing as stated on the datasheet

- Valid for 12 months from date of delivery
- Response to your inquiry within 24 hours
- We provide support in Chinese, English, French, German, Japanese and Spanish
- Extensive multi-media technical resources to help you
- We investigate all quality concerns to ensure our products perform to the highest standards

If the product does not perform as described on this datasheet, we will offer a refund or replacement. For full details of the Abpromise, please visit <https://www.abcam.co.jp/abpromise> or contact our technical team.

Terms and conditions

- Guarantee only valid for products bought direct from Abcam or one of our authorized distributors