

Anti-SLC14A1/UTE antibody ab103295

画像数 2

製品の概要

製品名	Anti-SLC14A1/UTE antibody
製品の詳細	Rabbit polyclonal to SLC14A1/UTE
由来種	Rabbit
アプリケーション	適用あり: WB
種交差性	交差種: Mouse, Human
免疫原	Recombinant full length protein within Human SLC14A1/UTE aa 1-400. The exact immunogen sequence used to generate this antibody is proprietary information. If additional detail on the immunogen is needed to determine the suitability of the antibody for your needs, please contact our Scientific Support team to discuss your requirements. (AAH50539.1)
ポジティブ・コントロール	Mouse liver tissue lysate; SLC14A1/UTE transfected 293T cell line lysate
特記事項	<p>The Life Science industry has been in the grips of a reproducibility crisis for a number of years. Abcam is leading the way in addressing this with our range of recombinant monoclonal antibodies and knockout edited cell lines for gold-standard validation. Please check that this product meets your needs before purchasing.</p> <p>If you have any questions, special requirements or concerns, please send us an inquiry and/or contact our Support team ahead of purchase. Recommended alternatives for this product can be found below, along with publications, customer reviews and Q&As</p>

製品の特性

製品の状態	Liquid
保存方法	Shipped at 4°C. Upon delivery aliquot and store at -20°C or -80°C. Avoid repeated freeze / thaw cycles.
バッファー	pH: 7.4 Constituent: PBS
精製度	Protein A purified
ポリ/モノ	ポリクローナル
アイソタイプ	IgG

アプリケーション

The Abpromise guarantee

Abpromise保証は、次のテスト済みアプリケーションにおけるab103295の使用に適用されます

アプリケーションノートには、推奨の開始希釈率がありますが、適切な希釈率につきましてはご検討ください。

アプリケーション	Abreviews	特記事項
WB		1/500 - 1/1000. Predicted molecular weight: 43 kDa.

ターゲット情報

機能

Urea channel that facilitates transmembrane urea transport down a concentration gradient. A constriction of the transmembrane channel functions as selectivity filter through which urea is expected to pass in dehydrated form. The rate of urea conduction is increased by hypotonic stress. Plays an important role in the kidney medulla collecting ducts, where it allows rapid equilibration between the lumen of the collecting ducts and the interstitium, and thereby prevents water loss driven by the high concentration of urea in the urine. Facilitates urea transport across erythrocyte membranes. May also play a role in transmembrane water transport, possibly by indirect means.

組織特異性

Detected in erythrocytes (at protein level). Erythrocytes.

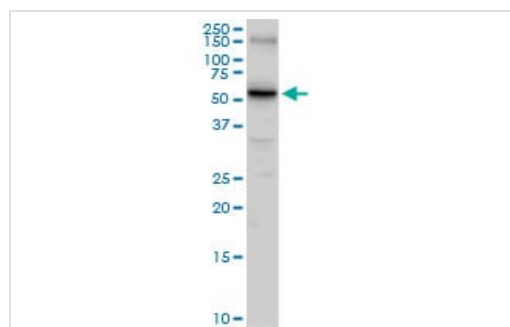
配列類似性

Belongs to the urea transporter family.

細胞内局在

Cell membrane. Basolateral cell membrane. Restricted to the basolateral membrane in various portions of the urothelium.

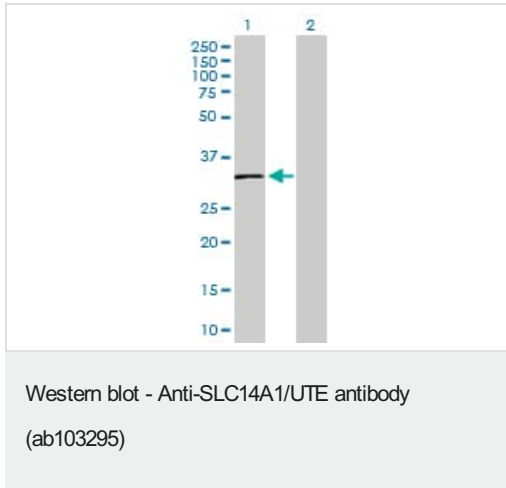
画像



Anti-SLC14A1/UTE antibody (ab103295) at 1/500 dilution + Mouse liver tissue lysate at 50 µg

Predicted band size: 43 kDa

Western blot - Anti-SLC14A1/UTE antibody
(ab103295)



All lanes : Anti-SLC14A1/UTE antibody (ab103295) at 1/500 dilution

Lane 1 : SLC14A1/UTE transfected 293T cell line

Lane 2 : non transfected 293T cell line

Lysates/proteins at 25 µg per lane.

Predicted band size: 43 kDa

Please note: All products are "FOR RESEARCH USE ONLY. NOT FOR USE IN DIAGNOSTIC PROCEDURES"

Our Abpromise to you: Quality guaranteed and expert technical support

- Replacement or refund for products not performing as stated on the datasheet
- Valid for 12 months from date of delivery
- Response to your inquiry within 24 hours
- We provide support in Chinese, English, French, German, Japanese and Spanish
- Extensive multi-media technical resources to help you
- We investigate all quality concerns to ensure our products perform to the highest standards

If the product does not perform as described on this datasheet, we will offer a refund or replacement. For full details of the Abpromise, please visit <https://www.abcam.co.jp/abpromise> or contact our technical team.

Terms and conditions

- Guarantee only valid for products bought direct from Abcam or one of our authorized distributors